

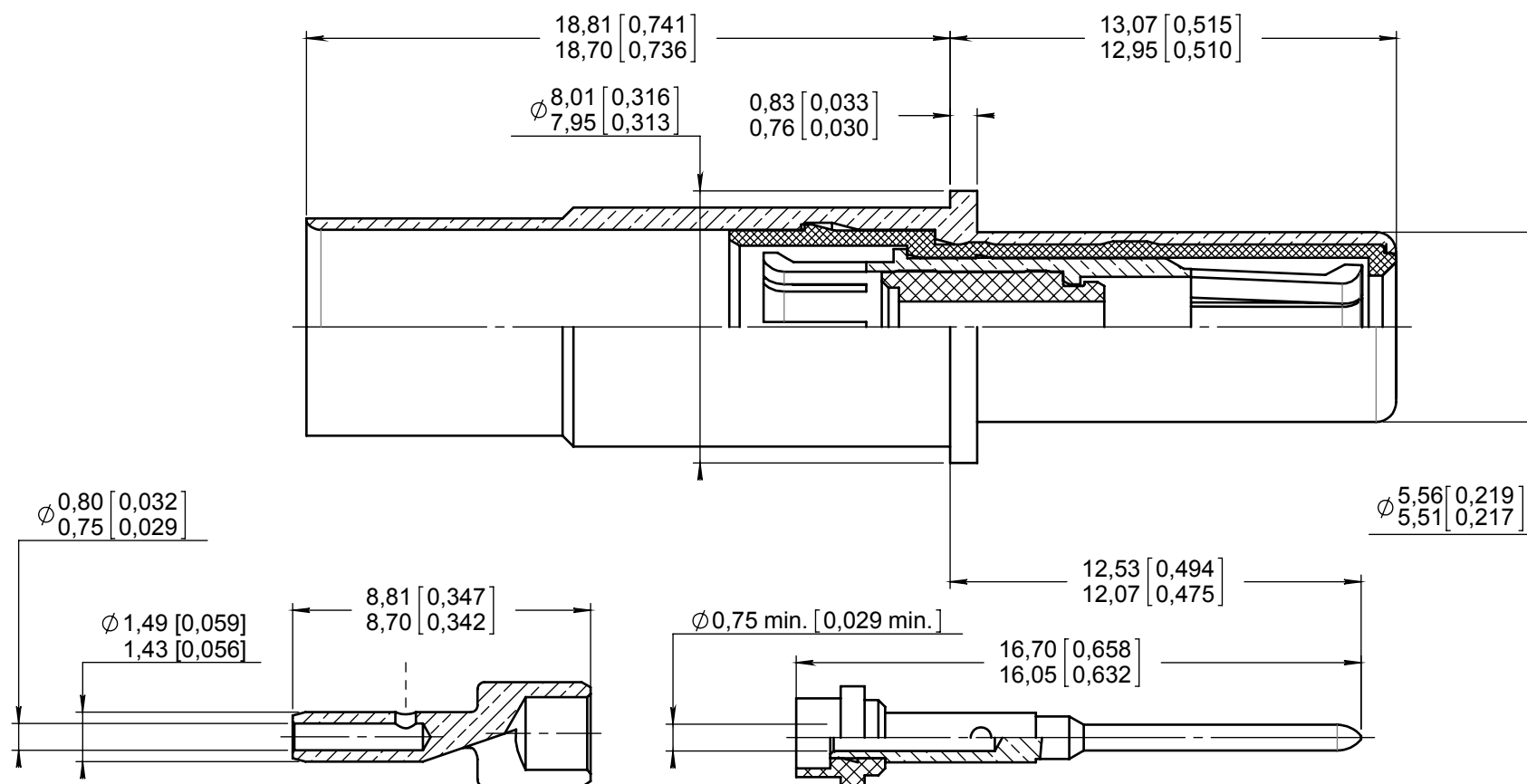
Series  
EPXB

SIZE 8 NONENVIRONMENTAL CONCENTRIC TWINAX PIN CONTACT  
FOR EN 3375-003 AND MIL C 17/17600002 CABLES

Issue:  
Apr 05th, 2013

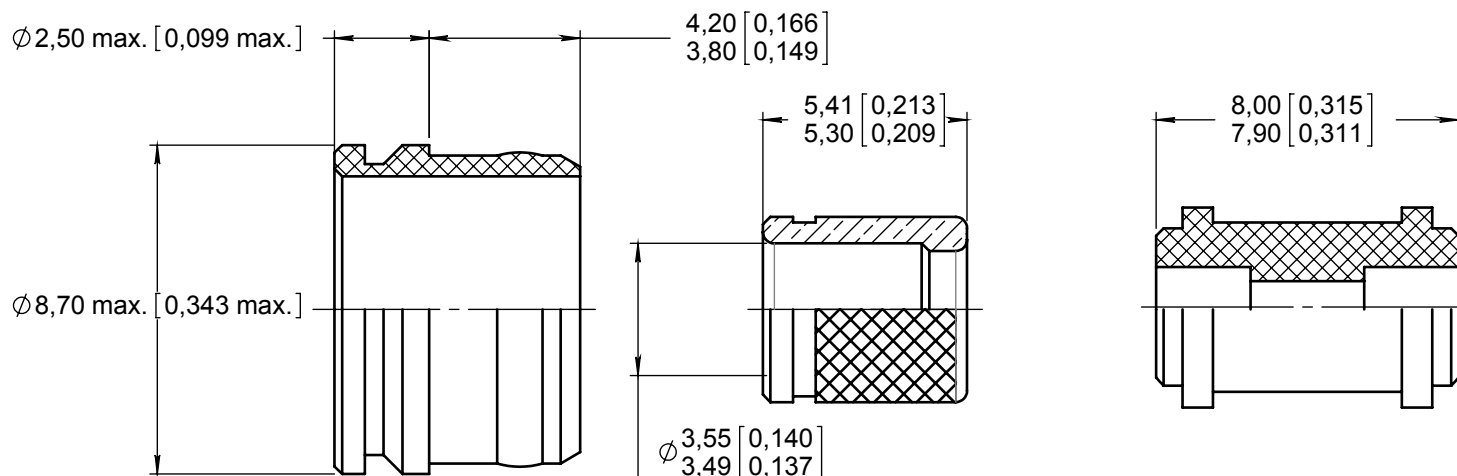
Page  
1/1

PIN BODY CONTACT WITH SOCKET INTERMEDIATE CONTACT SUBASSEMBLY



INTERMEDIATE CONTACT CRIMP POT

CENTER CONTACT SUB-ASSEMBLY



ALIGNMENT BOOT

FERRULE

DIELECTRIC SLEEVE

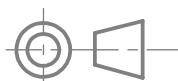
MATERIALS & FINISHES :

- OUTER, INTERMEDIATE, CENTER CONTACT : Copper alloy, gold over nickel plated.
- FERRULE : Brass, gold over nickel plated.
- DIELECTRIC PARTS DIELECTRIC SLEEVE AND ALIGNMENT BOOT: PTFE or equivalent.

NOTES :

- WIRING INSTRUCTION SEE RP 3364
- EXTRACTION TOOL: M81969/28-03 (RADIAL 282 549 001)

DIMENSIONS : mm (inch are given for information only)



Estimated weight : 4,40 g

CREATION				
PEN: 1012315-1961				
NOM: CHEVREAU M.				
DATE: Mar 12th, 2013				
APPR.: PESSARD M.				
Issue	Revisions	Name	Approved	

617165023EN

RADIAL PROPRIETARY INFORMATION