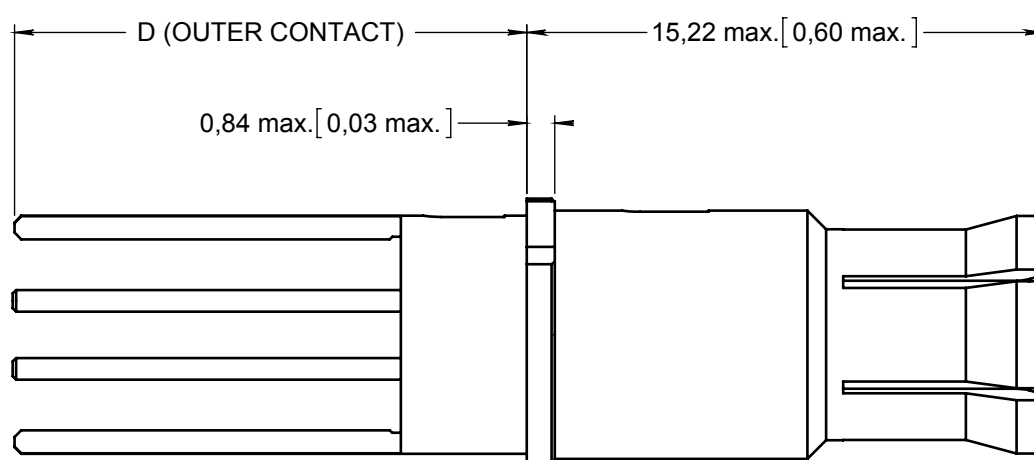
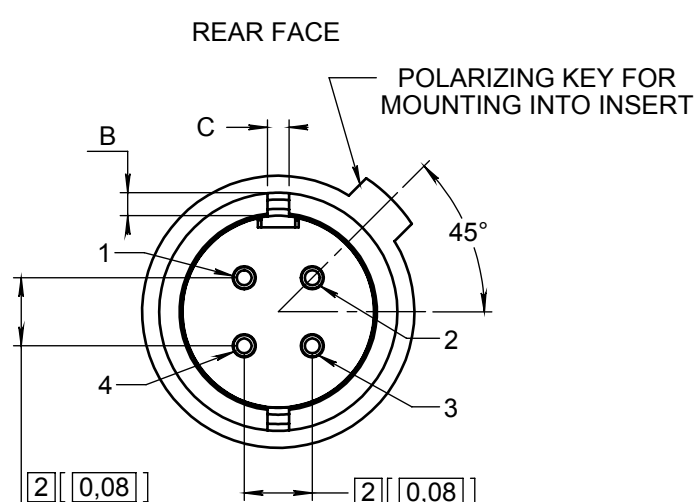
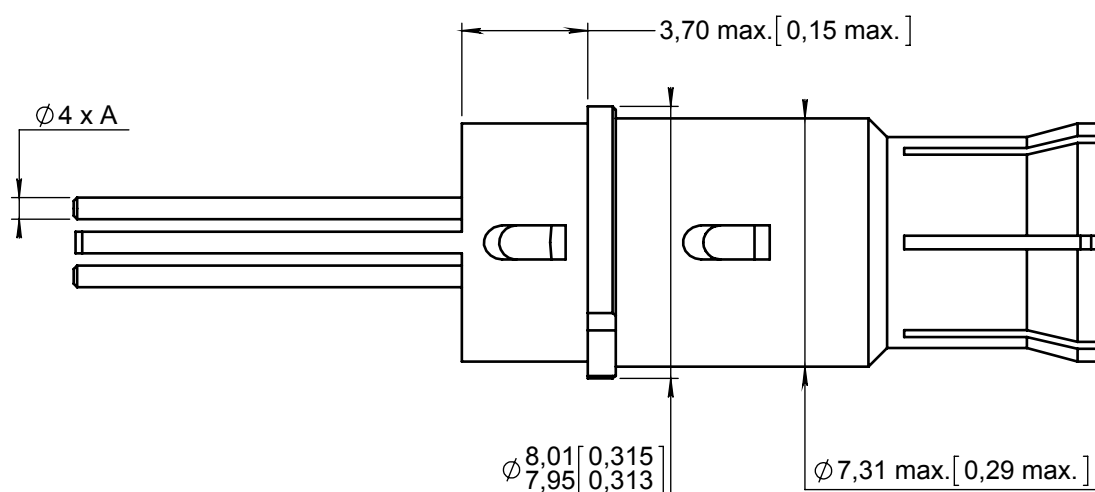
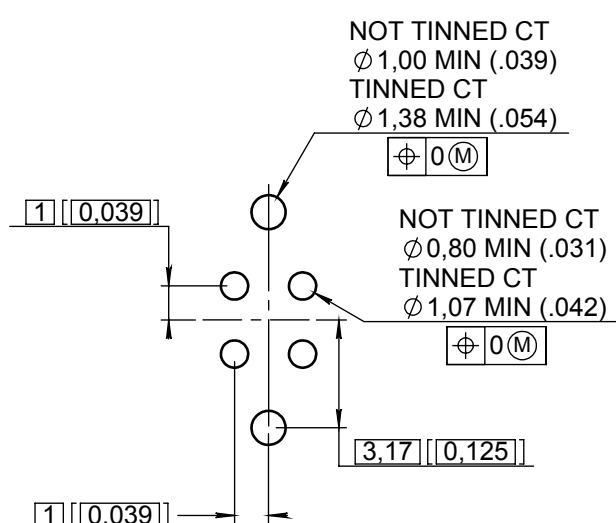


Series
EPXSIZE 8 REAR RELEASE, REAR REMOVABLE
PC TAIL SOCKET QUADRAX CONTACTSIssue:
Mar. 04, 2013Page
1/1RECOMMENDED
PC DRILL PATTERN

	CTS P/N	Type	ØA		B		C		D	
			BEFORE TINNING	AFTER TINNING	BEFORE TINNING	AFTER TINNING	BEFORE TINNING	AFTER TINNING	BEFORE TINNING	AFTER TINNING
NOT TINNED	617 077 012	YA		NA		NA		NA		NA
TIN LEADED	617 077 712	ZA	Ø0,67 (.026)	0,80 MAX (.031)	0,675 (.0265)	0,83 MAX (.033)	0,675 (.0265)	0,83 MAX (.033)	8,85 (.348)	9,35 MAX (.368)
ROHS TINNED	617 077 512	RA	Ø0,60 (.023)		0,595 (.0234)		0,595 (.0234)		8,65 (.341)	
NOT TINNED	617 077 002	YB		NA		NA		NA		NA
TIN LEADED	617 077 702	ZB	Ø0,67 (.026)	0,80 MAX (.031)	0,675 (.0265)	0,83 MAX (.033)	0,675 (.0265)	0,83 MAX (.033)	12,05 (.474)	12,55 MAX (.494)
ROHS TINNED	617 077 502	RB	Ø0,60 (.023)		0,595 (.0234)		0,595 (.0234)		11,85 (.467)	
NOT TINNED	617 077 008	YC		NA		NA		NA		NA
TIN LEADED	617 077 708	ZC	Ø0,67 (.026)	0,80 MAX (.031)	0,675 (.0265)	0,83 MAX (.033)	0,675 (.0265)	0,83 MAX (.033)	13,85 (.545)	14,35 MAX (.565)
ROHS TINNED	617 077 508	RC	Ø0,60 (.023)		0,595 (.0234)		0,595 (.0234)		13,65 (.537)	
NOT TINNED	617 077 013	YD		NA		NA		NA		NA
TIN LEADED	617 077 713	ZD	Ø0,67 (.026)	0,80 MAX (.031)	0,675 (.0265)	0,83 MAX (.033)	0,675 (.0265)	0,83 MAX (.033)	17,70 (.697)	18,20 MAX (.717)
ROHS TINNED	617 077 513	RD	Ø0,60 (.023)		0,595 (.0234)		0,595 (.0234)		17,50 (.689)	

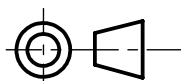
MATERIALS & FINISHES:

- OUTER CONTACT: Beryllium copper, Gold over nickel plated.
- CENTER CONTACT: Copper alloy, Gold over nickel plated.
- DIELECTRIC: PTFE or equivalent.

EXTRACTION TOOL:

- RADIAL P/N 282 549 001

DIMENSIONS : mm (inch are given for information only)



CREATION

PEN:

NOM: VIEIRA D.

DATE: Mar. 04, 2013

APPR.: LE GLOAHEC Y

Issue

Revisions

Name

Approved

617077###EN

RADIAL PROPRIETARY INFORMATION