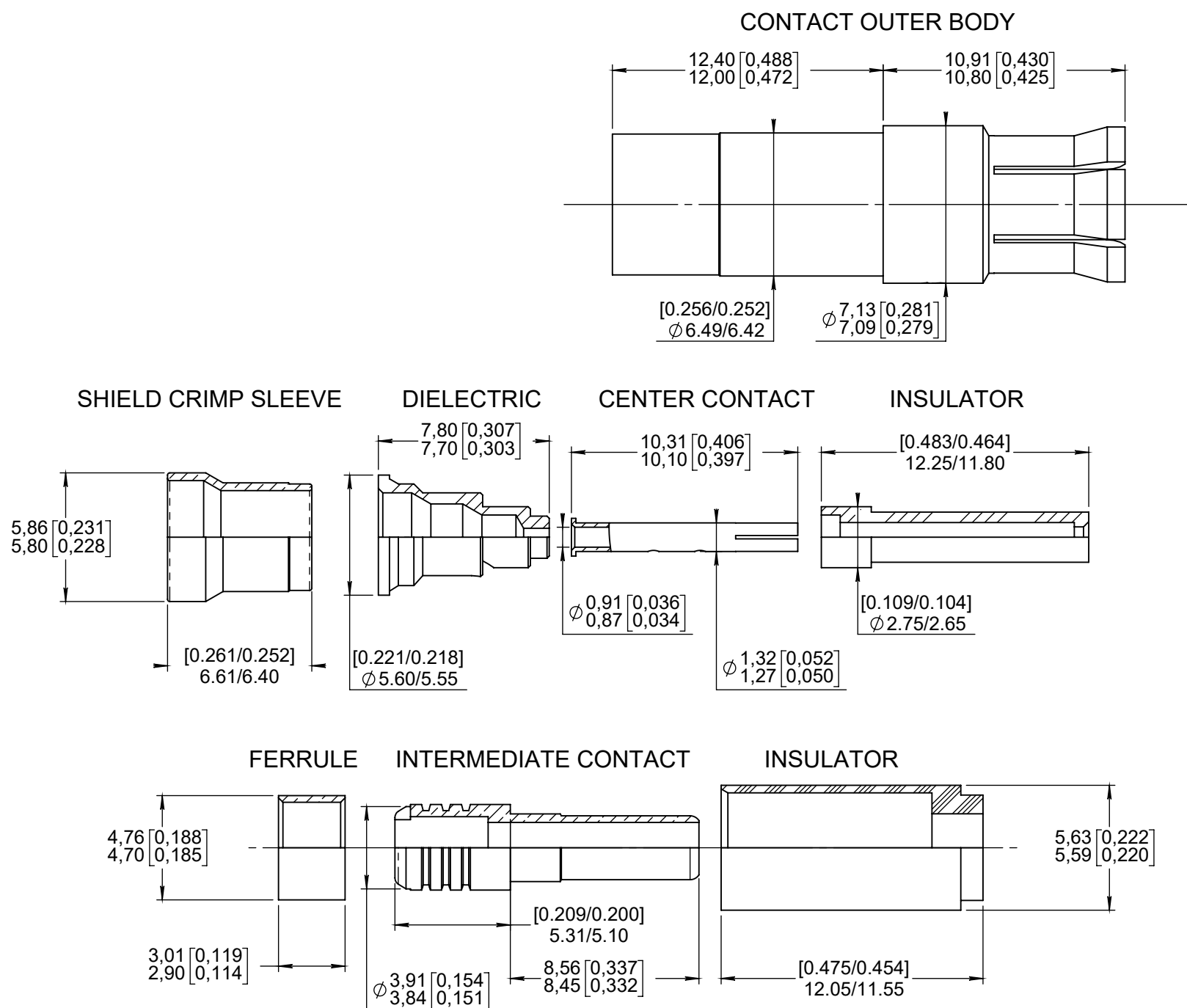


Series
EPXBNON-ENVIRONMENTAL CONCENTRIC TWINAX #5
SOCKET CONTACT
FOR TENSOLITE 24473/03159X-2(LD) CABLESIssue:
Dec. 15, 2017Page
1/1**Material :**

- Outer body contact and center contact : beryllium copper per ASTM-B-196.
- Ferrule : copper alloy per ASTM-B-453/B-453M.
- Shield crimp sleeve : copper alloy per ASTM-B-16/B-16M.
- Intermediate contact : copper alloy per ASTM-C-37700 B124.
- Dielectric and insulator : PTFE per ASTM-D-1710 or equivalent.

Finish :

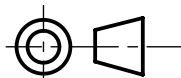
- All metallic parts : gold per SAE-AMS-2422 over nickel per SAE-AMS-QQ-N-290.

Crimping tools : (crimped contacts will show no crack when inspected, per MIL-C-22520, at 10x)

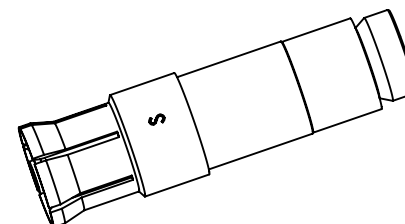
- Center contact :
 - . Basic tool : M22520/2.01 (RADIALL : 282 281).
 - . Selector set 3.
 - . Positionner RADIALL : 282 560.
- Intermediate and outer body contacts :
 - . Basic tool : M22520/5.01 (RADIALL: 282 293).
 - . Die : M22520/5.05 (RADIALL 282 246).
 - . Die closure : B for intermediate contact
 - . A for outer body contact

Extraction tool : M81969/28.01 (RADIALL 282 946).

See wiring specification: RP 57759.

DIMENSIONS : mm (inch are given for information only)

Estimated weight : 2,90 g



CREATION

PEN:

NOM: Branjonneau

DATE: August 1st, 2011

APPR.: M. Pessard

Dec. 15, 17

Issue

Mistake on title block : PAN6421 replaced by
Tensolite 24473/03159X-2(LD)

Revisions

Branjonneau V.

Name

Legendre T.

Approved

617052EN

RADIALL PROPRIETARY INFORMATION