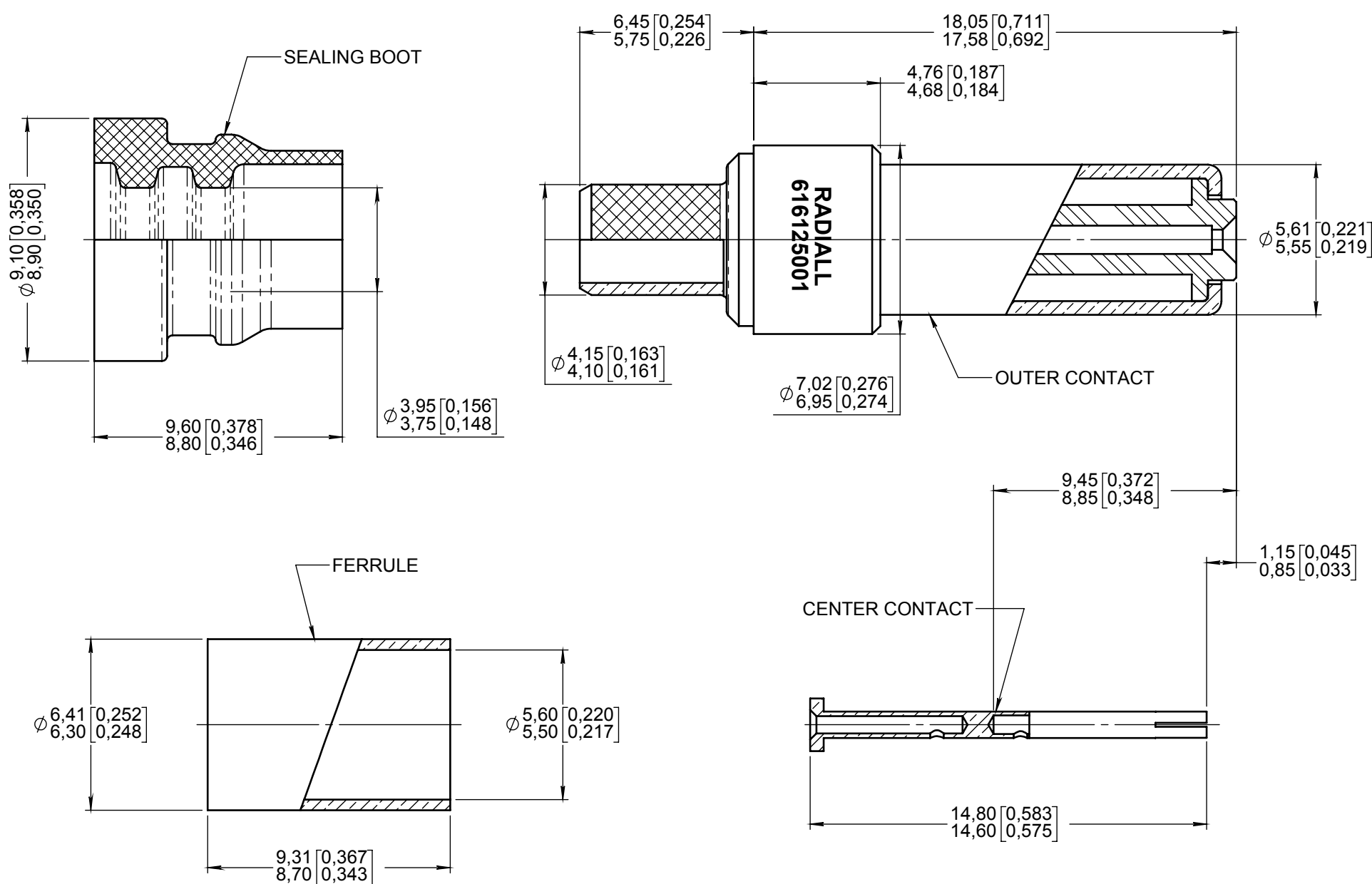


Series
DSX

ENVIRONMENTAL SIZE 5 CRIMP COAXIAL PIN CONTACT
FOR BELDEN 1855A CABLE

Issue:
Sept. 26, 2017

Page
1/1



MATERIAL :

OUTER CONTACT : BRASS PER ASTM B 16 OR ASTM B 453 OR EN 12164
INSULATOR : PTFE PER ASTM-D-1710 OR EQUIVALENT
CENTER CONTACT : BERYLLIUM COPPER PER ASTM-B-196
FERRULE: BRASS PER ASTM B 16 OR ASTM B 453 OR EN 12164
CRIMP BARREL: BRASS PER ASTM B 16 OR ASTM B 453 OR EN 12164
SEALING BOOT: FLUOROSILICONE PER SAE AMS-R-25988

FINISH :

ALL METALIC PARTS: .00005 OF GOLD PER SAE AMS-2422 OVER NICKEL PER AMS 2403

DESIGN REQUIREMENTS :

TEMPERATURE RANGE: -65°C to +125°C
IMPEDANCE : 75 OHMS NOMINAL
DIELECTRIC WITHSTANDING VOLTAGE: 750 V rms AT SEA LEVEL
VSWR: 1.3 from DC TO 1.5 GHz

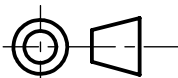
EXTRACTION TOOL :

RADIALL 282946 (M81659/28-01) (MUST BE ORDER SEPARATLY)

WIRING INSTRUCTIONS PER :

MICT0100048

DIMENSIONS : mm (inch are given for information only)



Estimated weight : 3.80 g

CREATION

PEN: 20165021-40

NOM: MOUTAULT W.

DATE: July. 25, 2016

APPR.: LEGENDRE T.

Issue	Revisions	Name	Approved
Sept. 26, 17	Mounting instruction number added	Moutault	Legendre
July. 25, 16	Was RP68614	Moutault	Legendre

PRODUCT NOT QUALIFIED

616125001EN

RADIALL PROPRIETARY INFORMATION