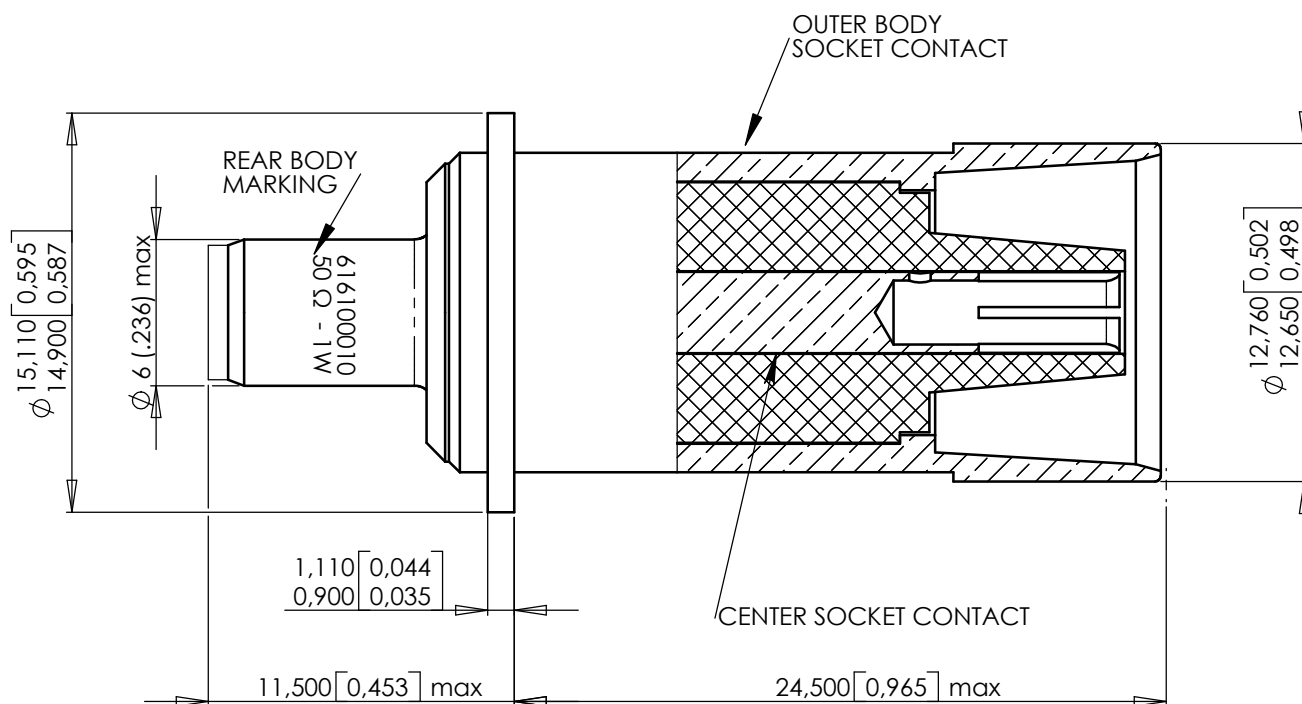




616100010

Page
1/2

MATERIAL

Outer body socket contact and Rear Body : Brass per ASTM B 16/B 16M
Center socket contact : Beryllium copper per ASTM-B-196
Insulator : P.T.F.E.

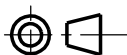
FINISH

Outer body socket contact, Center socket contact and Rear body :
Plating .00005 inch of gold per MIL-G-45204 type I or II
grade C or D class 1 over nickel per QQ-N-290.

TERMINATION CHARACTERISTICS

Impedance : 50 OHMS
Power : 1Watt

DIMENSIONS : mm (inch) -



CREATION PEN: M050009352A NOM: B GOMBERT DATE: 22 FEV 2005 APPR.: C LAHOREAU				
	Issue	Revisions	Name	Approved

616100010EN

This information is given as an indication. In the continual goal to improve our products, we reserve the right to make any modifications judged necessary.

4112_9311