



RADIAL[®]
MULTI CONTACT CONNECTORS

TECHNICAL DATA SHEET

616 013

Series

DSX

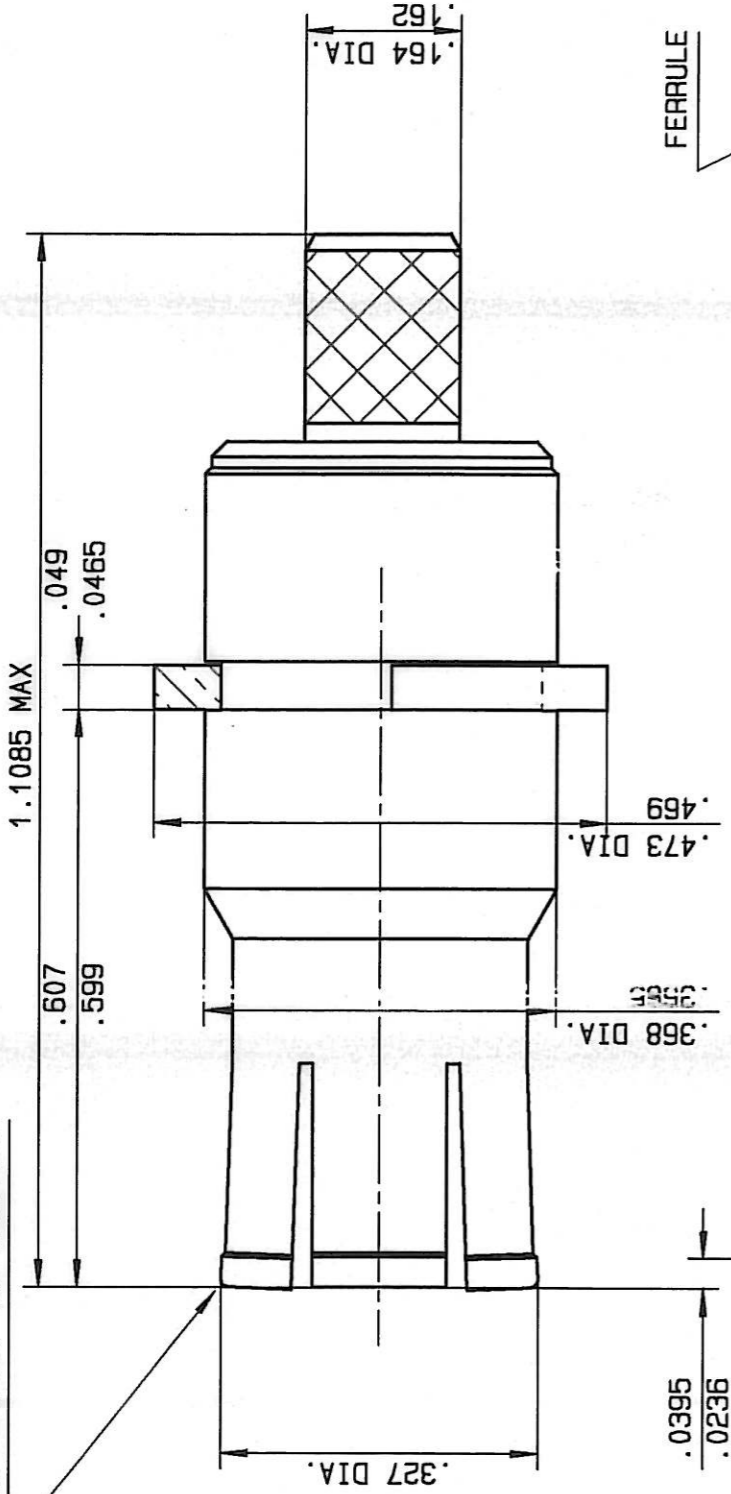
SIZE 3 COAXIAL PIN CONTACT
FOR RG142/U CABLE

Page

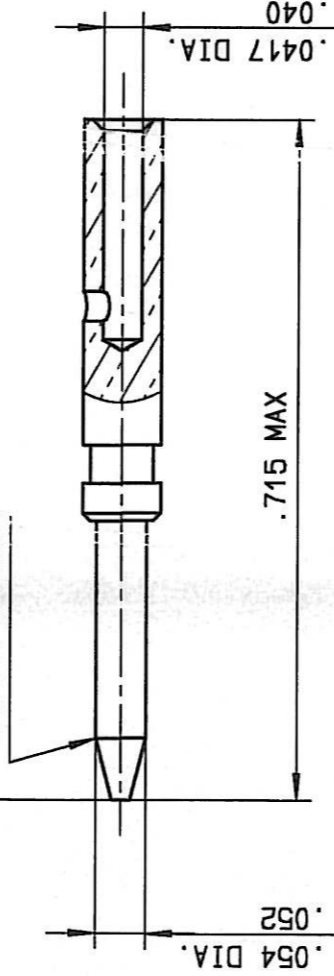
Issue:
09/28/98

1 / 2

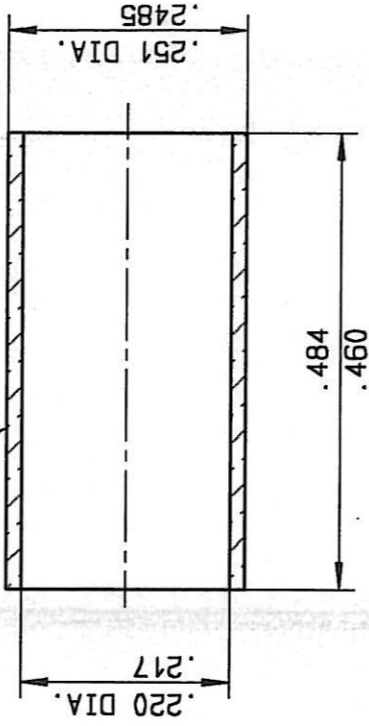
OUTER CONTACT SUB ASSEMBLY



CENTER CONTACT



FERRULE



MATERIAL

OUTER CONTACT : BERYLLIUM COPPER PER ASTM-B-196

INSULATOR : PTFE PER ASTM-D-1710 OR EQUIVALENT

CENTER CONTACT : BRASS PER QQ-B-626

FERRULE : ANNEALED BRASS

FINISH :

ALL METAL PARTS : PLATING .00005 INCH OF G"LD PER MIL-G-45204 type I or II grade C or D class 1
over nickel per QQ-N-290

ELECTRICAL CHARACTERISTICS :

IMPEDANCE : 50 Ω
DIELECTRIC WITHSTANDING VOLTAGE : 1500 Volts R M S at sea level
INSULATION RESISTANCE : $\geq 5000 M\Omega$
CONTACT RESISTANCE PER CONTACT : $\geq 25 m\Omega$
VSWR : 1,3 from DC to 5000 MHz

WIRING INSTRUCTIONS (SEE PAGE 2/2)

CREATION

PEN: /

NOM: MARIE

DATE: 01/28/86

APPR.: .

09/28/98 REDRAWN

Issue

Revisions

GOMBERT
Name

BALDYREV
Approved

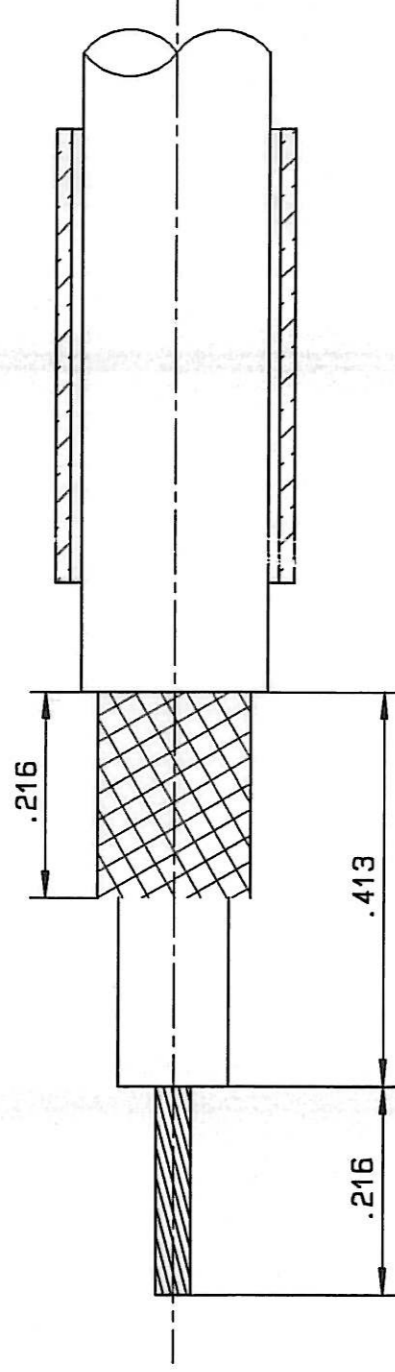
A616013



WIRING INSTRUCTIONS

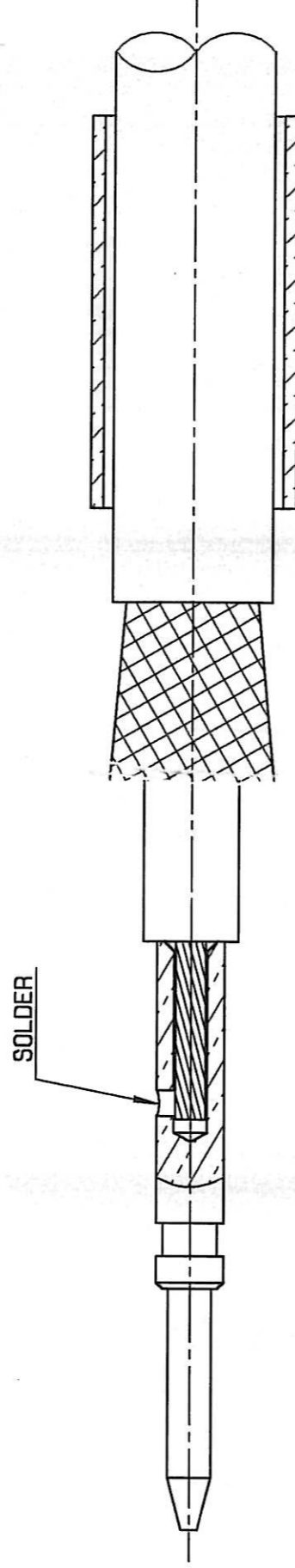
STEP 1

TRIM BRAID, DIELECTRIC AND CENTER CONDUCTOR TO DIMENSIONS INDICATED
SLIDE THE FERRULE ON THE CABLE



STEP 2

INTRODUCE CENTER CONDUCTOR INTO CENTER CONTACT SOLDER CENTER CONTACT



STEP 3

SLIDE CENTER CONTACT INTO THE OUTER CONTACT
ENSURING THAT IT'S PUSHED HOME AND THAT THE REAR KNURLED BARREL IS UNDER THE BRAID
SLIDE THE FERRULE OVER THE BRAID AND CRIMP

CRIMPING TOOL : M 22520/5-01 (RADIAL 282293)
DIE : M 22520/5-05 (RADIAL 282246)
HEX A (.2126/FLATS)

