

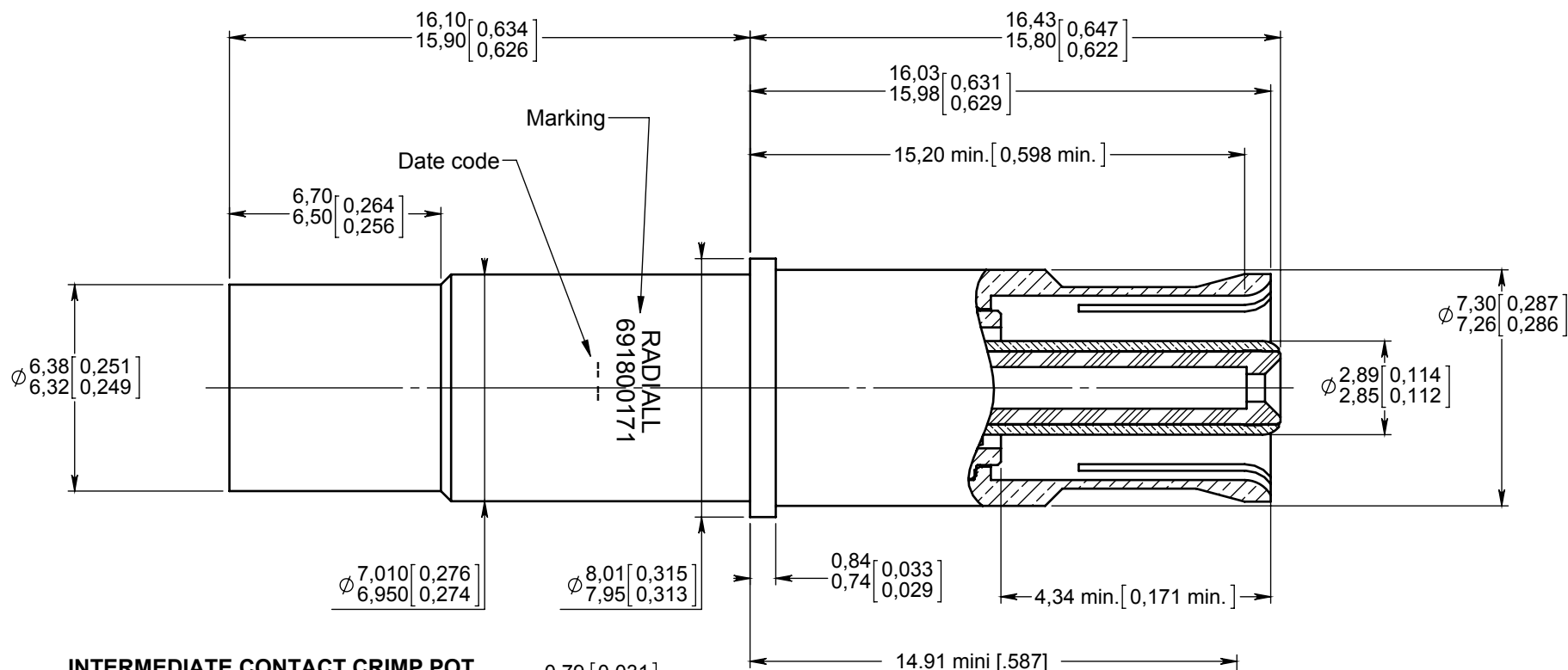
Series
691

SIZE 8 CONCENTRIC SOCKET TWINAX CONTACT
FOR EN3375-004 AND EN3375-005 CABLE

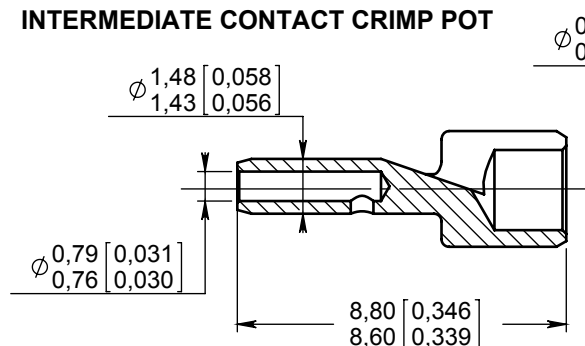
Issue:
Apr. 06, 2017

Page
1/1

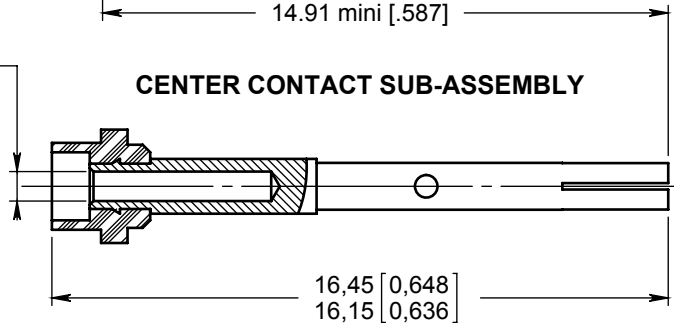
OUTER AND INTERMEDIATE CONTACT SUB-ASSEMBLY



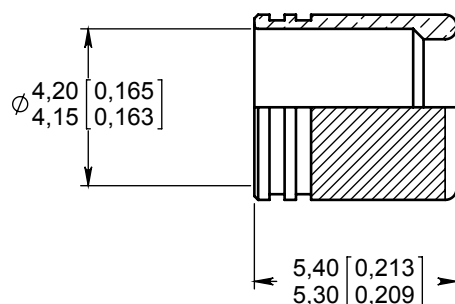
INTERMEDIATE CONTACT CRIMP POT



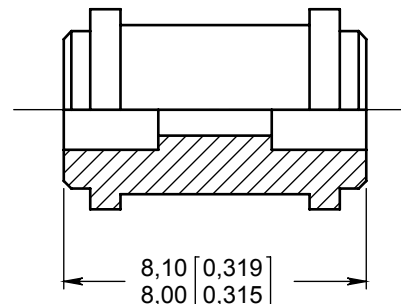
CENTER CONTACT SUB-ASSEMBLY



INNER FERRULE



DIELECTRIC SLEEVE



MATERIALS:

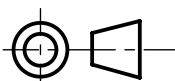
- OUTER BODY, INTERMEDIATE CONTACT AND CENTER CONTACTY : BERYLLIUM COPPER ALLOY PER ASTM-B-196
- INTERMEDIATE CONTACT CRIMP POT : LEADED NICKEL COPPER.
- INNER FERRULE : BRASS PER QQ-B-626
- DIELECTRIC PARTS , DIELECTRIC SLEEVE AND ALIGNMENT BOOT : PTFE PER ASTM-D-1710 OR SUITABLE MATERIAL.

FINISHES:

ALL METALLIC PARTS :
GOLD PLATED PER MIL-G-45204 ,TYPE I OR II , GRADE C OR D , CLASS 1 (50 MICROINCHES OVER NICKEL PER QQ-N-290 CLASS 2).

WIRING INSTRUCTIONS : SEE RP 3364

DIMENSIONS : mm (inch are given for information only)



Estimated weight : 5,20 g

CREATION

PEN: M060009445A

NOM: VAN DEN B.

DATE: 02/01/2006

APPR.: PERRIN H.

Apr. 06, 2017	Ø6,95 / 7,01 , marking and estimated weight added. Note "PRODUCT NOT QUALIFIED " added	Perrin H.	Legendre T.	
02/14/06	691 800 171 was RP 59471	B VAN DEN	/	
Issue	Revisions	Name	Approved	

**PRODUCT
NOT QUALIFIED**

691800171EN

RADIALL PROPRIETARY INFORMATION