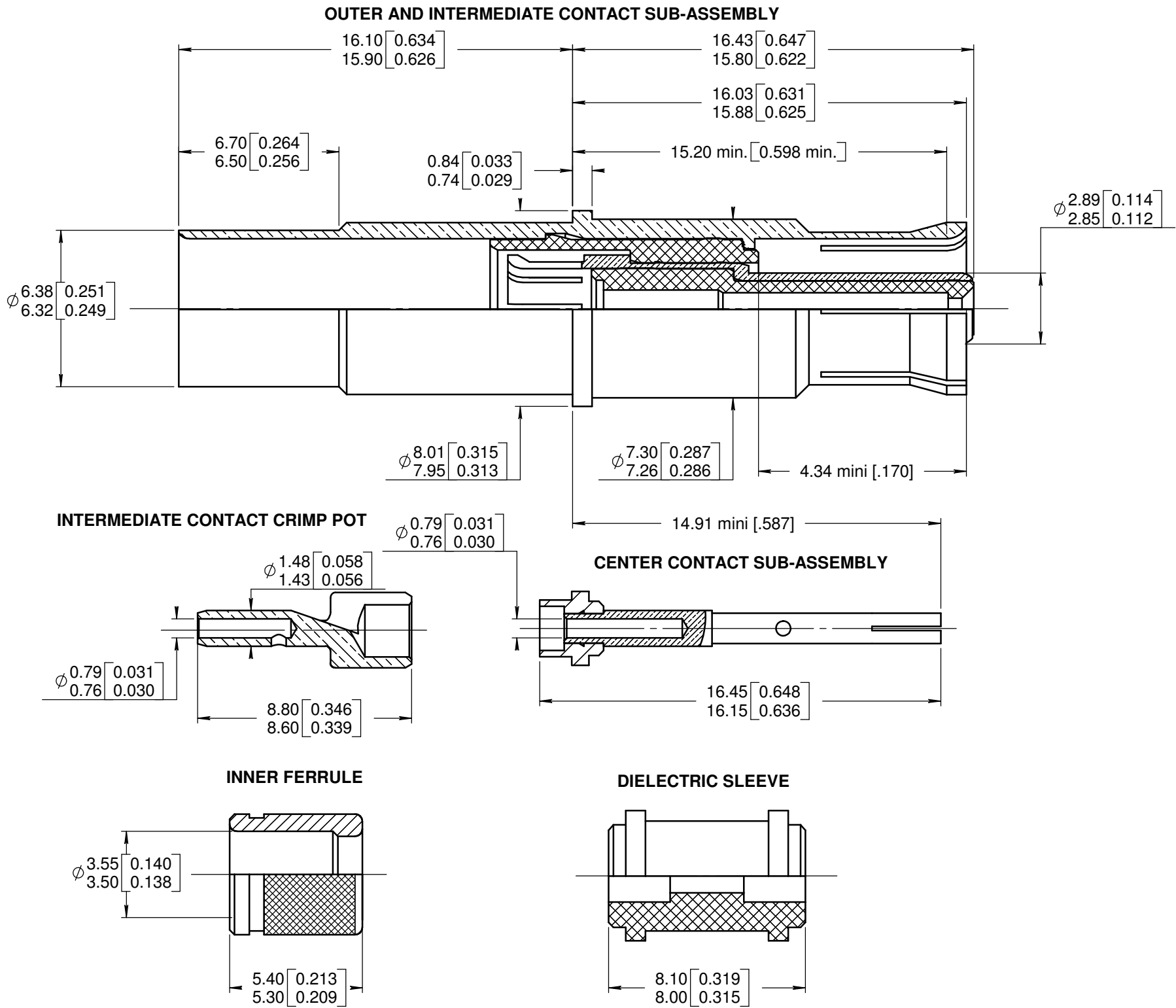


Series	SIZE 8 CONCENTRIC SOCKET TWINAX CONTACT FOR EN 3375-003 CABLE	Issue: 02/14/06	Page 1/1
--------	--	--------------------	-------------



**MATERIALS:**

- OUTER BODY, INTERMEDIATE CONTACT AND CENTER CONTACTY : BERYLLIUM COPPER ALLOY PER ASTM-B-196
- INTERMEDIATE CONTACT CRIMP POT : LEADED NICKEL COPPER ( C97)
- INNER FERRULE : BRASS PER QQ-B-626
- DIELECTRIC PARTS , DIELECTRIC SLEEVE AND ALIGNMENT BOOT : PTFE PER ASTM-D-1710 OR EQUIVALENT

**FINISHES:**

ALL METALLIC PARTS :

GOLD PLATED PER MIL-G-45204 ,TYPE I OR II , GRADE C OR D , CLASS 1 ( 50 MICROINCHES OVER NICKEL PER QQ-N-290 CLASS 2

WIRING INSTRUCTIONS : SEE RP 3364

DIMENSIONS : mm (inch) -

CREATION				
PEN: M060009445A				
NOM: VAN DEN B.				
DATE: 02/01/2006				
APPR.: PERRIN H.	02/14/06	691 800 170 was RP 59472	B VAN DEN	/
	Issue	Revisions	Name	Approved

Confidential information not to be disclosed to third parties without Radiall approval  
This information is given as an indication. In the continual goal to improve our products, we reserve the right to make any modifications judged necessary.

4112\_9311