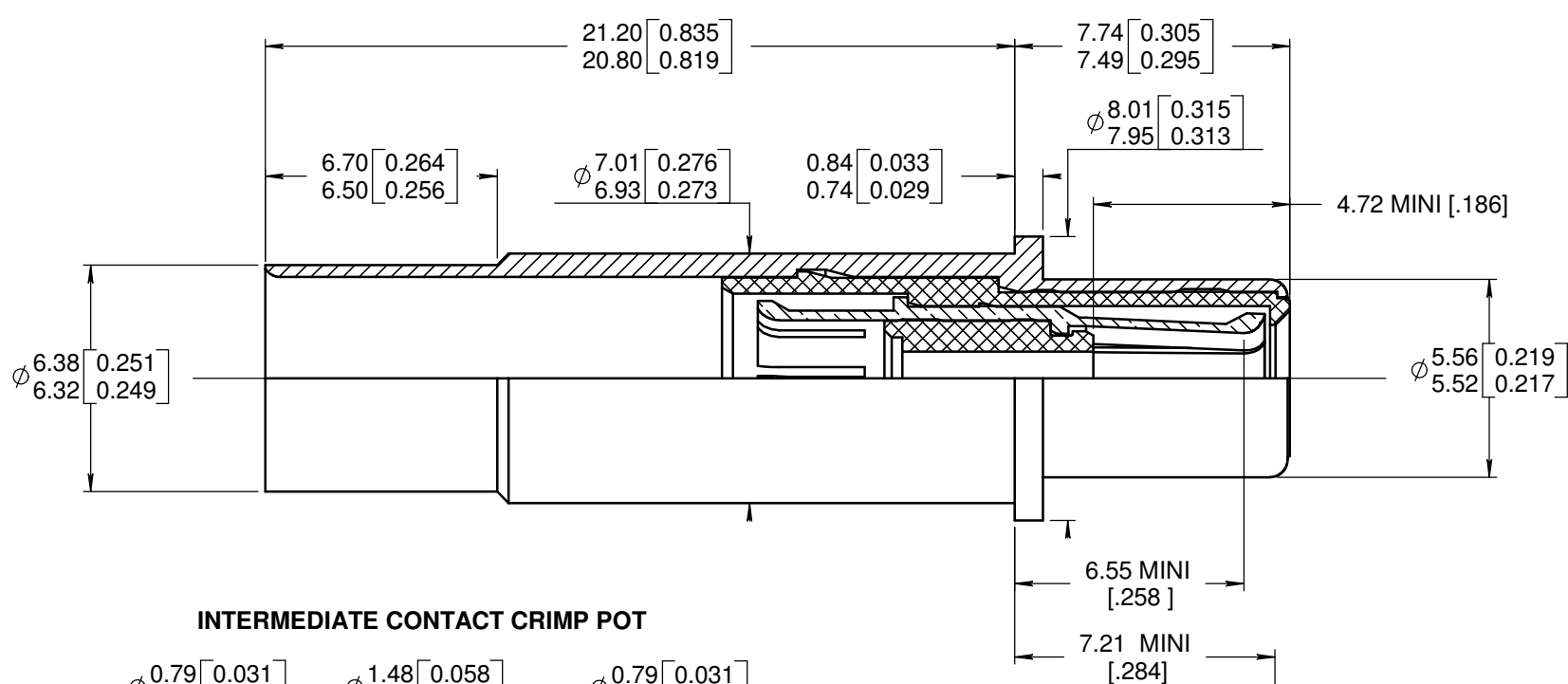
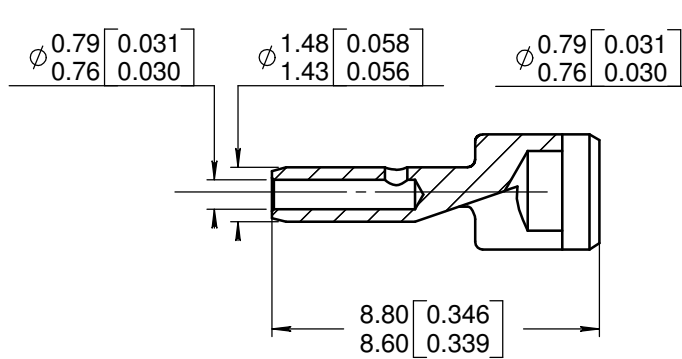


Series	SIZE 8 CONCENTRIC PIN TWINAX CONTACT FOR EN 3375-003 CABLE	Issue: 02/14/06	Page 1/1
--------	---	--------------------	-------------

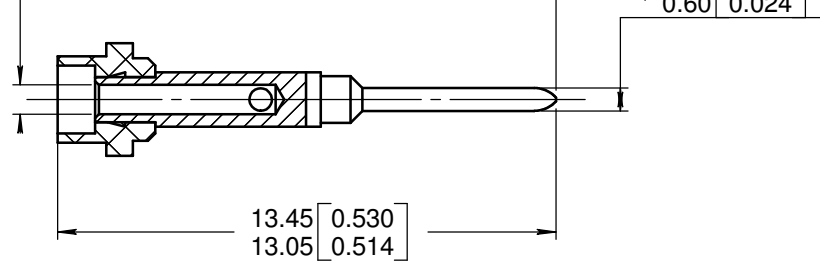
OUTER AND INTERMEDIATE CONTACT SUB- ASSEMBLY



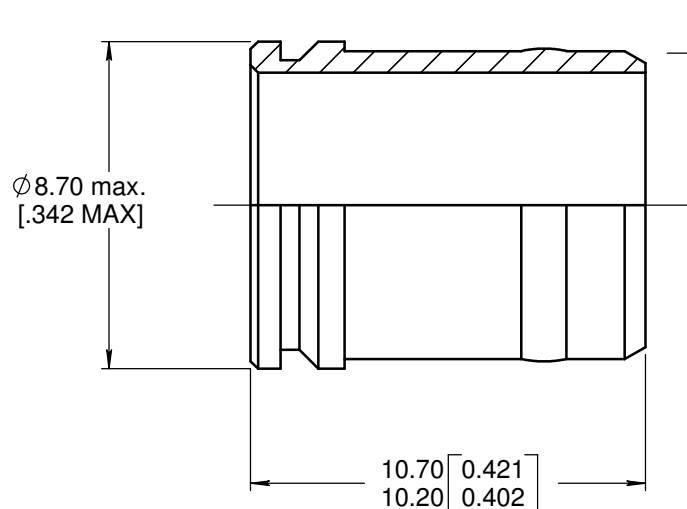
INTERMEDIATE CONTACT CRIMP POT



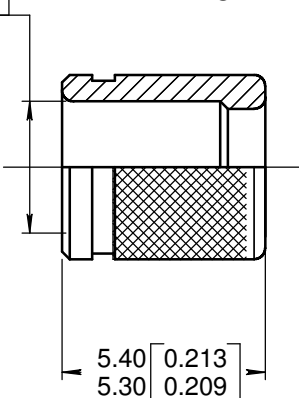
CENTER CONTACT SUB-ASSEMBLY



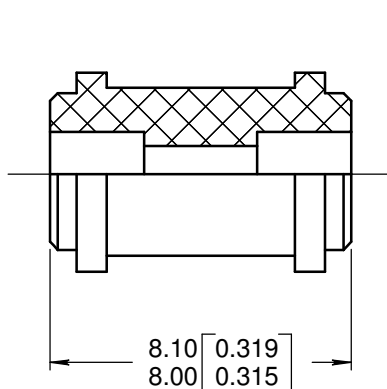
ALIGNMENT BOOT



INNER FERRULE



DIELECTRIC SLEEVE



MATERIALS:

- OUTER BODY AND INTERMEDIATE CONTACT : BERYLLIUM COPPER ALLOY PER ASTM-B-196
- CENTER CONTACT AND INTERMEDIATE CONTACT CRIMP POT : LEADED NICKEL COPPER (C97)
- INNER FERRULE : BRASS PER QQ-B-626
- DIELECTRIC PARTS , DIELECTRIC SLEEVE AND ALIGNMENT BOOT : PTFE PER ASTM-D-1710 OR EQUIVALENT

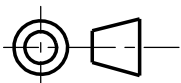
FINISHES:

ALL METALLIC PARTS :

GOLD PLATED PER MIL-G-45204 ,TYPE I OR II , GRADE C OR D , CLASS 1 (50 MICROINCHES OVER NICKEL PER QQ-N-290 CLASS 2

WIRING INSTRUCTIONS : SEE RP 3364

DIMENSIONS : mm (inch) -



CREATION				
PEN: M060009445A				
NOM: VAN DEN B.				
DATE: 02/01/2006				
APPR.: PERRIN H.	02/14/06	691 800 070 was RP 59470	B VAN DEN	/
	Issue	Revisions	Name	Approved

Confidential information not to be disclosed to third parties without Radiall approval.
This information is given as an indication. In the continual goal to improve our products, we reserve the right to make any modifications judged necessary.