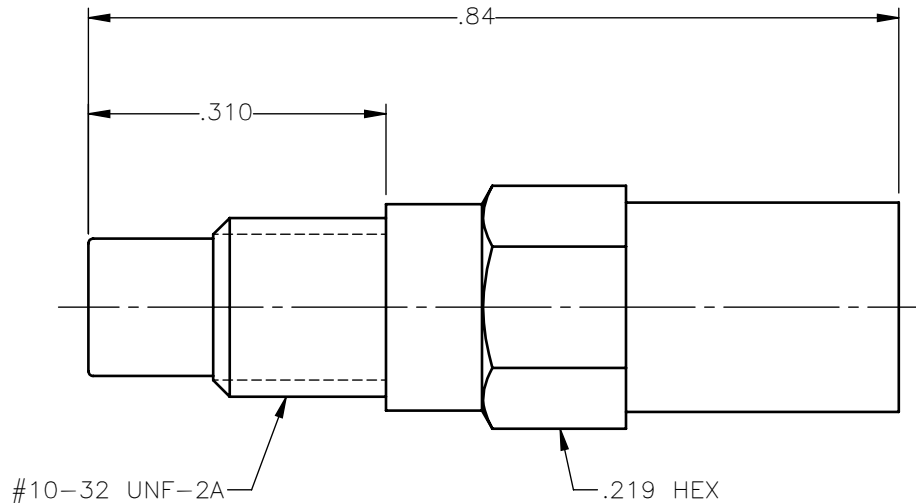


REVISIONS			
REV.	DESCRIPTION	DATE	APPROVED
A	INITIAL RELEASE	03/27/18	C.E.




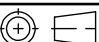
NOTES:

MATERIALS:

1. INSULATORS = VIRGIN WHITE TEFLON PER ASTM D1710, GRADE 1, TYPE I, CLASS "B".
2. RESISTOR = 47 OHM, 1/2 WATT, 1% TOL. PER MIL-R-10509.
3. ALL OTHER METAL PARTS = BRASS PER ASTM B16, ALLOY C36000, TEMPER H02.

FINISHES:

1. CONTACT = GOLD PLATE PER ASTM B488-11, TYPE II, 50μin MIN, GRADE C, OVER 100 TO 200μin STRESS FREE SULFAMATE NICKEL PER AMS-QQ-N-290.
2. ALL OTHER METAL PARTS = NICKEL PLATE PER AMS-QQ-N-290, CLASS 1, GRADE G, EXCEPT 100 TO 200μin THICK OVER 50 TO 100μin THICK COPPER PER AMS 2418.

UNLESS OTHERWISE SPECIFIED DIMENSIONS ARE IN INCHES TOLERANCES ON		DWN:	DATE	 Property of Radiall This document cannot be reproduced or communicated to a third party without prior written permission of RADIALL.		
		C.E.	03/27/18			
DECIMAL	ANGLE	CHKD:	DATE	SMC MALE JACK RESISTIVE TERMINATION DUMMY LOAD		
		D.N.	03/27/18			
		APVD:	DATE	1037-7511-051		
		J.M.	03/27/18			
REFERENCE:		MATERIALS & FINISHES:		SIZE	REV	
ORIGINATED: C.E. DATE: 03/27/18		SEE NOTES		A	A	
				FSCM NO.		
				19505		
				DWG NO.		
				1037-7511-051		
				SCALE		
				5:1		
				THIRD ANGLE PROJECTION		
						
				SHEET 1 OF 1		

1037-7511-051