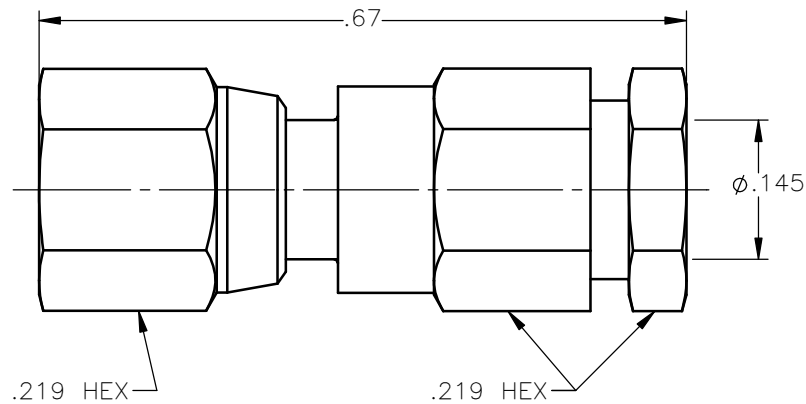


| REVISIONS | | | |
|-----------|-----------------|----------|----------|
| REV. | DESCRIPTION | DATE | APPROVED |
| A | INITIAL RELEASE | 04/09/18 | D.N. |





NOTES:

MATERIALS:

1. INSULATORS = VIRGIN WHITE TEFLON PER ASTM D1710, GRADE 1, TYPE I, CLASS "B".
2. CONTACT = BERYLLIUM COPPER PER ASTM B196, ALLOY C17300, TEMPER TD04.
3. ALL OTHER METAL PARTS = BRASS PER ASTM B16, ALLOY C36000, TEMPER H02.

FINISHES:

1. CONTACT = GOLD PLATE PER ASTM B488-11, TYPE II, 50μin MIN, GRADE C, OVER 100 TO 200μin STRESS FREE SULFAMATE NICKEL PER AMS-QQ-N-290.
2. SOLDER FITTING = GOLD PLATE PER ASTM B488-11, TYPE II, 30μin MIN, GRADE C OVER 100 TO 200μin COPPER STRIKE PER AMS 2418.
3. ALL OTHER METAL PARTS = NICKEL PLATE PER AMS-QQ-N-290, CLASS 1, GRADE G, EXCEPT 100 TO 200μin THICK OVER 50 TO 100μin THICK COPPER PER AMS 2418.

| | | | | | | | | |
|---|-------|-----------------------|----------|--|--|---|--|--|
| UNLESS OTHERWISE SPECIFIED DIMENSIONS ARE IN INCHES TOLERANCES ON | | DWN: | DATE |  Property of Radiall This document cannot be reproduced or communicated to a third party without prior written permission of RADIALL. | |  | | |
| | | D.N. | 04/09/18 | | | | | |
| DECIMAL | ANGLE | CHKD: | DATE | SMC STRAIGHT FEMALE PLUG SOLDER-CLAMP TYPE FOR .141 S/R & SIMILAR CABLES | | | | |
| | | C.E. | 04/09/18 | | | | | |
| | | APVD: | DATE | SIZE A FSCM NO. 19505 DWG NO. 1002-7541-009 REV A | | | | |
| | | J.M. | 04/09/18 | | | | | |
| REFERENCE: | | MATERIALS & FINISHES: | | SCALE 5:1 THIRD ANGLE PROJECTION | | | | |
| ORIGINATED: D.N. DATE: 04/09/18 | | SEE NOTES | | | | | | |

1002-7541-009