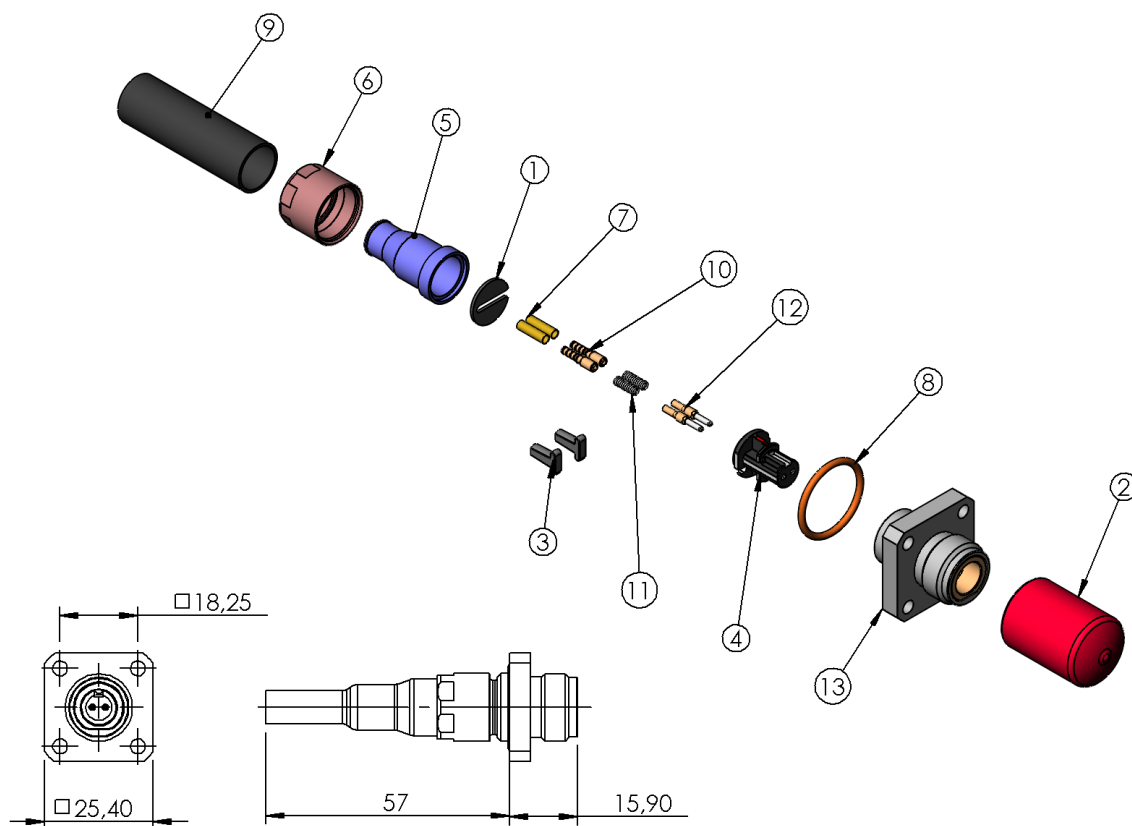


PAGE 1/2	ISSUE 17-06-16D	SERIES RXF	PART NUMBER RXF2430200
----------	-----------------	------------	-------------------------------

Dimensions in mm



DESCRIPTION

REP	COMPONENT	MATERIAL	PLATING	Qty.
1	Contacts arrester	Stainless Steel	NA	1
2	Vinyl red cap	Soft vinyl	NA	1
3	Ferrule Caps	H.D.P.E	NA	2
4	R2F Insert	IXEF	NA	1
5	Socket crimp neck	Brass	Nickel	1
6	Nut M14 x 0.5	Brass	Nickel	1
7	Contact Ferrule	Brass	Nickel	1
8	O-Ring	Silicone Rubber	NA	2
9	Heat Shrink Sleeve	-	NA	1
10	Contact Crimp Rear Tube	Brass	Nickel	2
11	Spring	Stainless Steel	NA	2
12	S/A Ferrule holder + MM Ferrule	-	NA	2
13	RXF Socket Body	Brass	Nickel	1

PAGE 2/2	ISSUE 17-06-16D	SERIES RXF	PART NUMBER RXF2430200
----------	-----------------	------------	------------------------

Dimensions in mm

GENERAL CHARACTERISTICS

Material	Connector metallic parts	Brass
	Plating	Nickel, underplating Copper
	Connector plastic part	PAA 50% glass fiber
	Ferrule	Ceramic
	Seal	Silicone rubber

Mechanical	Tensile load IEC 61300-2-4	68N max
	Vibration IEC 61300-2-1	10-500Hz / 10g passed
	Bump IEC 61300-2-9	40g passed
	Mating endurance	500 cycles
	Type N shape and thread	Compliant
	Mating Torque	1 N.m Recommended (5N.m Max)

Environmental	Operational temperature	-40/+85°C
	Storage temperature	-55/+85°C
	Humidity (damp heat)	95% HR
	Salt mist IEC 61300-2-26	Passed
	Protection class IEC 60529	IP68 when coupled or with threaded cap
	RoHS	Compliant

Optical	Insertion Loss (typical – max)	Multimode, @850nm = 0.2 dB Typ 0.5 dB max
----------------	--------------------------------	--

Packaging	100 pieces, each component in plastic bag or tray, all in cardboard box.
Piece part MOQ	100 pieces

CABLING PROCESS

Following RADIALL Cabling Instructions of R2F Socket with the use of the specific toolings list is recommended.