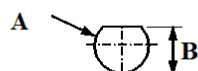
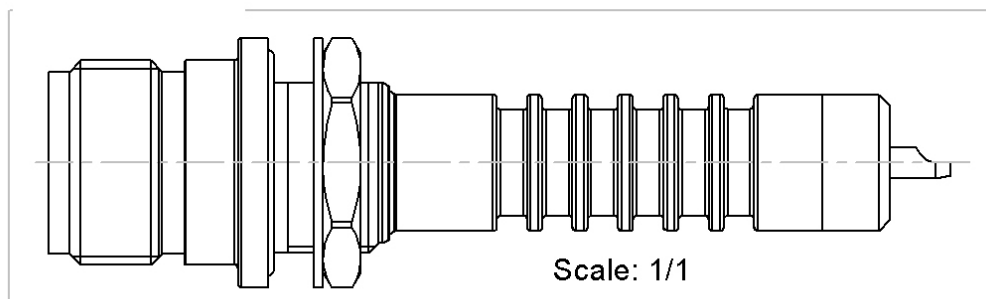
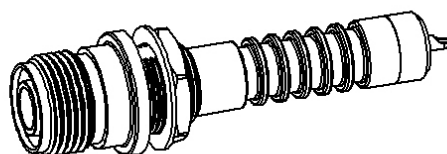


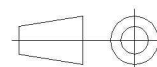
PANEL CUT OUT



	mm	
	Maxi	mini
A	24.65	24.55
B	22.6	22.5



All dimensions are in mm. Tolerances according ISO 2768 m-H



COMPONENTS	MATERIALS	PLATING (μm)
Body	BRASS	NICKEL
Center contact	BRASS	SILVER .
Outer contact	-	-
Insulator	HIGH PRESSURE POLYETHYLENE	
Gasket	-	
Others parts	BRASS	NICKEL
-	-	-
-	-	-

PAGE 2/2

ISSUE
29-10-24N

SERIES **THT-40**

PART NUMBER **R346603000**

PACKAGING

Standard	Unit	Other
1	Contact us	Contact us

ELECTRICAL CHARACTERISTICS

Impedance		50	Ω
Frequency		0-0.7	GHz
VSWR	NA	+	0,000 x F(GHz) Maxi
Insertion loss		NA	\sqrt{F} (GHz) dB Maxi
RF leakage	- (NA	- F(GHz)) dB Maxi
Voltage rating		*	Veff Maxi
Dielectric withstanding voltage		*	Veff mini
Insulation resistance		10000	M Ω mini

ENVIRONMENTAL

Operating temperature	-40/+70	$^{\circ}\text{C}$
Hermetic seal	NA	Atm.cm3/s
Panel leakage	IP61	

MECHANICAL CHARACTERISTICS

Center contact retention		
Axial force – Mating End	NA	N mini
Axial force – Opposite end	NA	N mini
Torque	NA	N.cm mini

Recommended torque		
Mating	NA	N.cm
Panel nut	700	N.cm

Mating life	500	Cycles mini
Nominal Weight	134,950	g
(Add +15% for max weight)		

SPECIFICATION

OTHER CHARACTERISTICS

Assembly instruction:**NA**

Others:

***10000 Vcc connector alone**

***40000 Vcc mated connector**