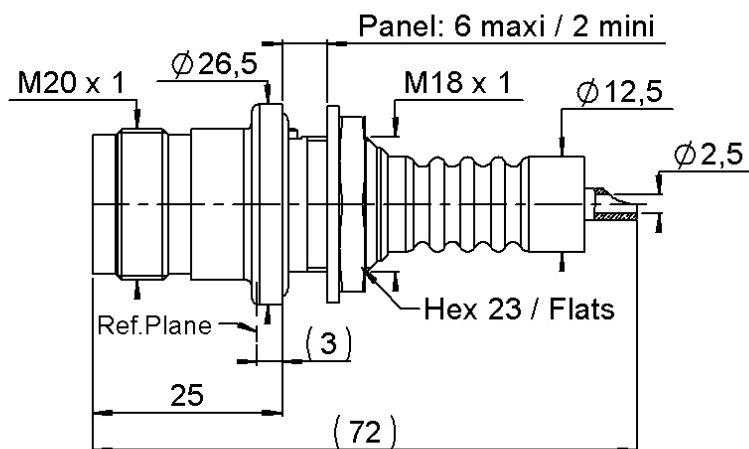


PAGE 1/2

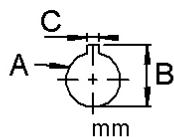
ISSUE
05-01-24E

SERIES THT-20

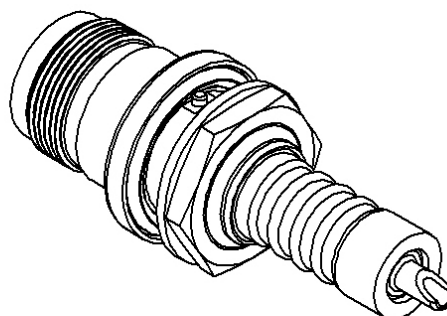
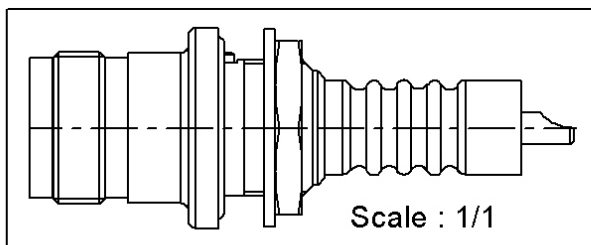
PART NUMBER R331603000



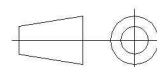
PANEL CUT OUT



	Maxi	Mini
A	18.3	18.1
B	19.1	18.9
C	2.3	2.1



All dimensions are in mm. Tolerances according ISO 2768 m-H



COMPONENTS	MATERIALS	PLATING (μm)
Body	BRASS	NICKEL
Center contact	BRASS	SILVER OVER COPPER
Outer contact	-	-
Insulator	PTFE	-
Gasket	SILICONE RUBBER	-
Others parts	BRASS	NICKEL
-	-	-
-	-	-

PAGE 2/2

ISSUE
05-01-24E

SERIES THT-20

PART NUMBER R331603000

PACKAGING

Standard	Unit	Other
1		Contact us

ELECTRICAL CHARACTERISTICS

Impedance		50	Ω
Frequency		0-1	GHz
VSWR	NA +	0,0000	x F(GHz) Maxi
Insertion loss		NA	√F(GHz) dB Maxi
RF leakage	- (NA	- F(GHz) dB Maxi
Voltage rating		*	Veff Maxi
Dielectric withstanding voltage		*	Veff mini
Insulation resistance		10000	MΩ mini

MECHANICAL CHARACTERISTICS

Center contact retention			
Axial force – Mating End		27	N mini
Axial force – Opposite end		NA	N mini
Torque		NA	N.cm mini

Recommended torque			
Mating		NA	N.cm
Panel nut		600	N.cm

Mating life		500	Cycles mini
Nominal Weight		67,0000	g
(Add +15% for max weight)			

ENVIRONMENTAL

Operating temperature	-55/+125	°C
Hermetic seal	NA	Atm.cm3/s
Panel leakage	**	

SPECIFICATION

OTHER CHARACTERISTICS

Assembly instruction:

Others:

*10000 Vcc alone

*20000 Vcc accoupling

**Sealing : Pressure 3.5 bars duration 2 mn