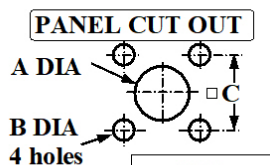
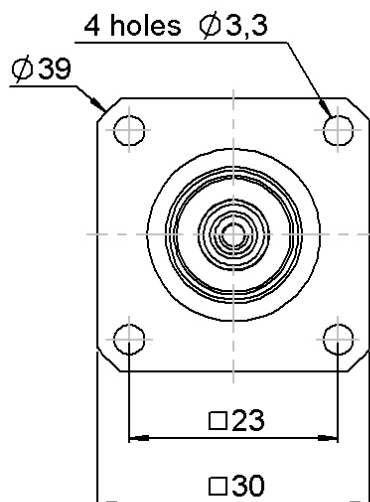


PAGE 1/2

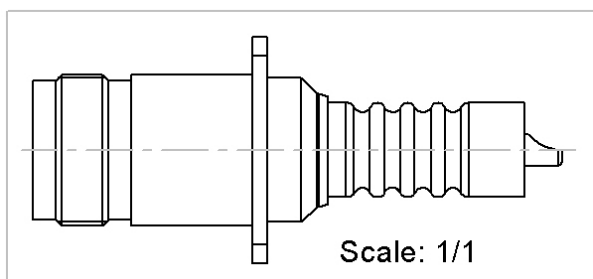
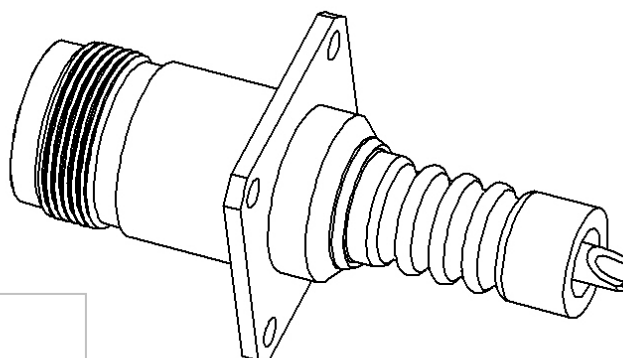
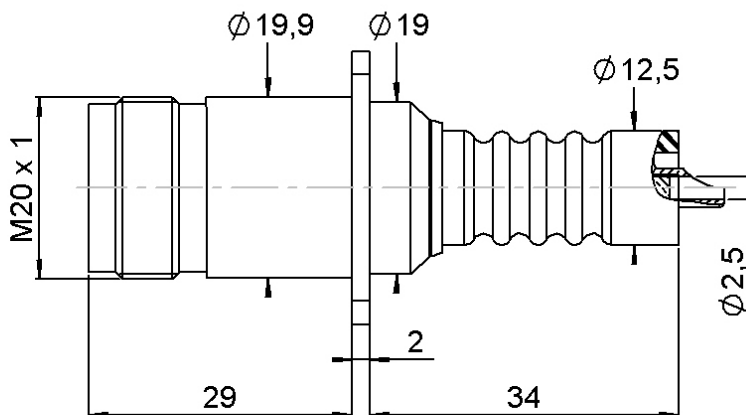
ISSUE
11-03-24R

SERIES THT-20

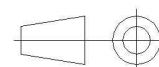
PART NUMBER R331405000



	mm	
	Maxi	mini
A (R. Mount)	19.4	19.3
A (F. Mount)	20.3	20.2
B	3.4	3.3
C	23.05	22.95



All dimensions are in mm. Tolerances according ISO 2768 m-H



COMPONENTS	MATERIALS	PLATING (μm)
Body	BRASS	NICKEL
Center contact	BRASS	SILVER OVER COPPER
Outer contact		
Insulator	PTFE	
Gasket		
Others parts	BRASS	SILVER OVER COPPER
-	-	-
-	-	-

PAGE 2/2

ISSUE
11-03-24R

SERIES **THT-20**

PART NUMBER **R331405000**

PACKAGING

Standard	Unit	Other
1	Contact us	Contact us

ELECTRICAL CHARACTERISTICS

Impedance		50	Ω
Frequency		0-1	GHz
VSWR	NA	+	0,000 x F(GHz) Maxi
Insertion loss		NA	√F(GHz) dB Maxi
RF leakage	- (NA	- F(GHz)) dB Maxi
Voltage rating		*	Veff Maxi
Dielectric withstanding voltage		*	Veff mini
Insulation resistance		10000	MΩ mini

ENVIRONMENTAL

Operating temperature	-55/+125	°C
Hermetic seal	NA	Atm.cm3/s
Panel leakage	NA	

MECHANICAL CHARACTERISTICS

Center contact retention		
Axial force – Mating End	27	N mini
Axial force – Opposite end	NA	N mini
Torque	NA	N.cm mini

Recommended torque		
Mating	-	N.cm
Panel nut	-	N.cm

Mating life	500	Cycles mini
Nominal Weight	60,900	g
(Add +15% for max weight)		

SPECIFICATION

OTHER CHARACTERISTICS

Assembly instruction:

Others:

- *10000 V.DC connector alone**
- *20000 V.DC mated connector**