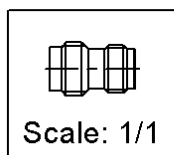
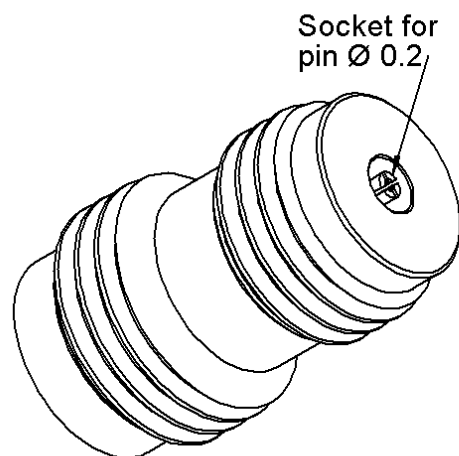
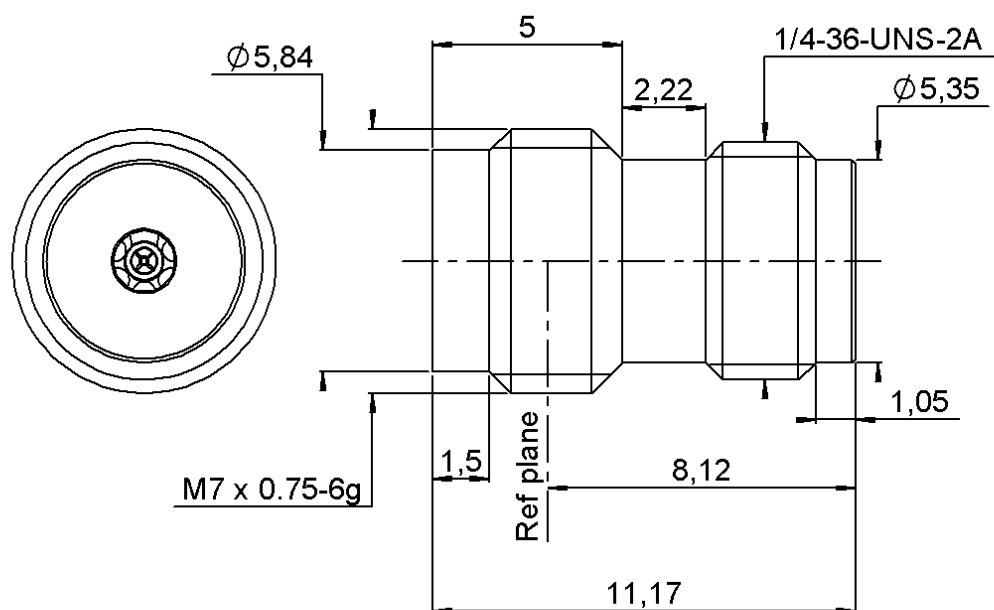


PAGE 1/2

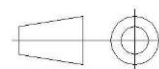
ISSUE 14-01-19A

SERIES 2.4MM

PART NUMBER R327556011



All dimensions are in mm. Tolerances according ISO 2768 m-H



COMPONENTS	MATERIALS	PLATING (μm)
Body	STAINLESS STEEL	PASSIVATED
Center contact	BERYLLIUM COPPER	GOLD OVER NICKEL
Outer contact	BRASS	GOLD OVER NICKEL
Insulator	PEEK	
Gasket		
Others parts		
-	-	-
-	-	-

PAGE 2/2

ISSUE 14-01-19A

SERIES 2.4MM

PART NUMBER R327556011

PACKAGING

Standard	Unit	Other
1	Contact us	Contact us

ELECTRICAL CHARACTERISTICS

Impedance		50	Ω
Frequency		0-50	GHz
VSWR	1.05* +	0,0040	x F(GHz) Maxi
Insertion loss		0.04*	√F(GHz) dB Maxi
RF leakage	- (100**	- F(GHz)) dB Maxi
Voltage rating		250	Veff Maxi
Dielectric withstanding voltage		500	Veff mini
Insulation resistance		5000	MΩ mini

MECHANICAL CHARACTERISTICS

Center contact retention			
Axial force – Mating End	27	N mini	
Axial force – Opposite end	27	N mini	
Torque	NA	N.cm mini	

Recommended torque			
Mating	NA	N.cm	
Panel nut	NA	N.cm	

Mating life	500	Cycles mini	
Nominal Weight	1,8900	g	
(Add +15% for max weight)			

ENVIRONMENTAL

Operating temperature	-65/+165	°C
Hermetic seal	NA	Atm.cm3/s
Panel leakage	NA	

SPECIFICATION

OTHER CHARACTERISTICS

Assembly instruction:

Others:

* Coaxial Transmission Line Only

**RF leakage at 1 GHz