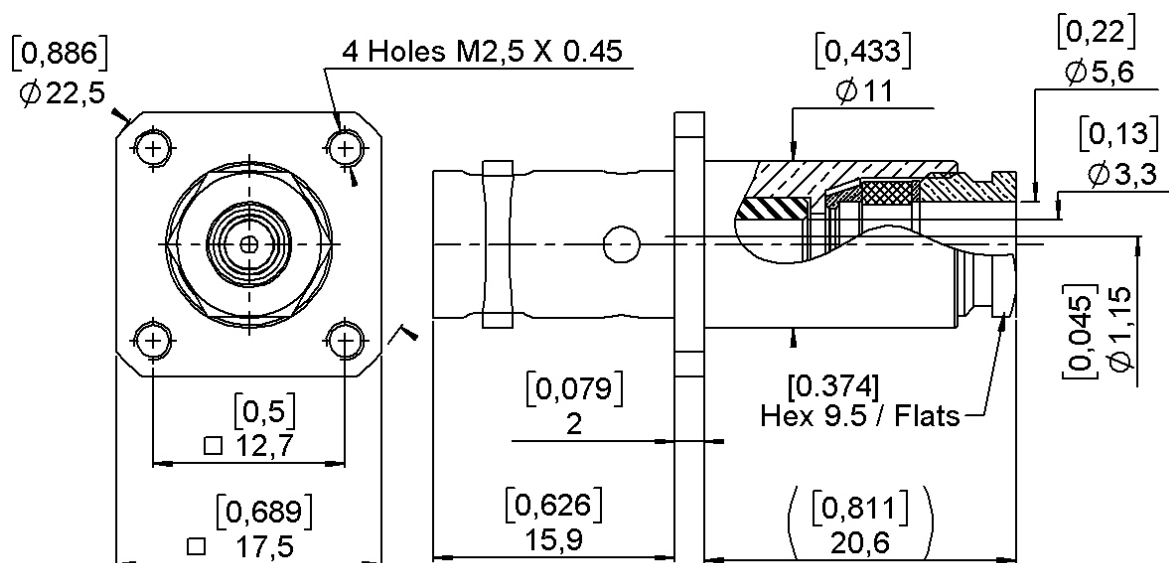


PAGE 1/3

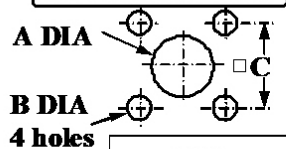
ISSUE
24-10-23N

SERIES BNC-HT /
MHV

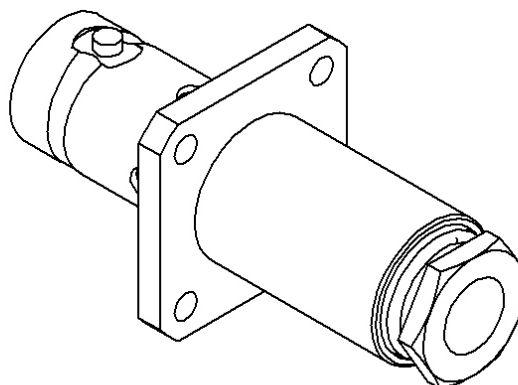
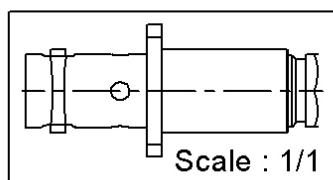
PART NUMBER R316257000



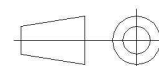
PANEL CUT OUT



	mm	
	Maxi	mini
A	11.3	11.2
B	2.7	2.6
C	12.75	12.65



All dimensions are in mm. Tolerances according ISO 2768 m-H



COMPONENTS	MATERIALS	PLATING (μm)
Body	BRASS	NICKEL .
Center contact	BERYLLIUM COPPER	SILVER .
Outer contact	-	-
Insulator	PTFE	-
Gasket	-	-
Others parts	BRASS	NICKEL .
-	-	-
-	-	-

PAGE 2/3

ISSUE
24-10-23N

SERIES BNC-HT /
MHV

PART NUMBER R316257000

PACKAGING

Standard	Unit	Other
1		Contact us

ELECTRICAL CHARACTERISTICS

Impedance	50	Ω
Frequency	0-2	GHz
VSWR	1.2 + 0,2000	x F(GHz) Maxi
Insertion loss	NA	√F(GHz) dB Maxi
RF leakage	- (NA	- F(GHz)) dB Maxi
Voltage rating	NA	Veff Maxi
Dielectric withstanding voltage	6000*	Veff mini
Insulation resistance	NA	MΩ mini

MECHANICAL CHARACTERISTICS

Center contact retention		
Axial force – Mating End	NA	N mini
Axial force – Opposite end	NA	N mini
Torque	NA	N.cm mini

Recommended torque		
Mating	NA	N.cm
Panel nut	NA	N.cm
Clamp nut	150	N.cm
A/F clamp nut	9,5000	mm

Mating life	500	Cycles mini
Nominal Weight (Add +15% for max weight)	19,1100	g

ENVIRONMENTAL

Operating temperature	-55/+155	°C
Hermetic seal	NA	Atm.cm3/s
Panel leakage	NA	

SPECIFICATION

CABLE ASSEMBLY

Stripping	a	b	c	d	e	f
mm	2,5000	14,700 0	0,0000	0,0000	11,500 0	0,0000

Assembly instruction: **Clamp 03**

Recommended cable(s)

KX 15
RG 141
RG 58

Characteristics indicated on this data sheet are those that can be achieved with the highest performance cable. Intrinsic limitations of the cable may diminish the performance of the assembly

Cable retention

- pull off	90	N mini
- torque	NA	N.cm

TOOLING

Part Number	Description	Other
.	.	.

OTHER CHARACTERISTICS

***Test frequency at 60Hz**
10 KVeFF for mated pair

PAGE 3/3

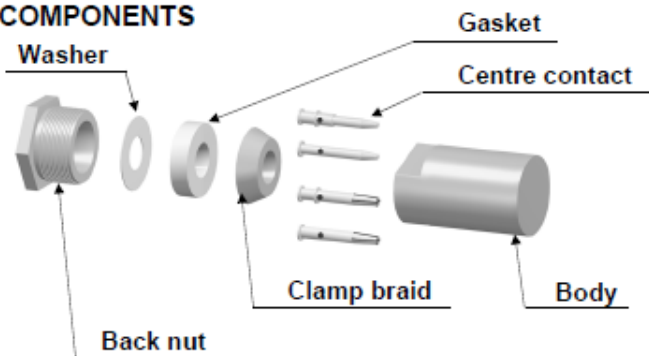
ISSUE
24-10-23N

SERIES BNC-HT /
MHV

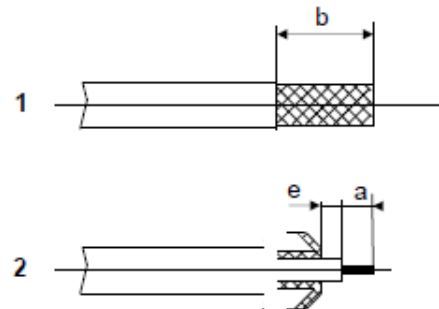
PART NUMBER R316257000

V

COMPONENTS



STRIPPING DIMENSIONS



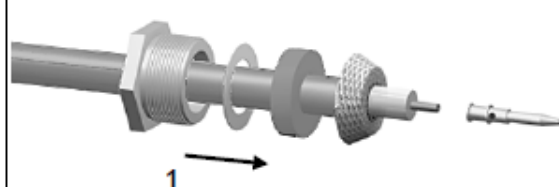
1

Strip the cable as shown in sketch 1.



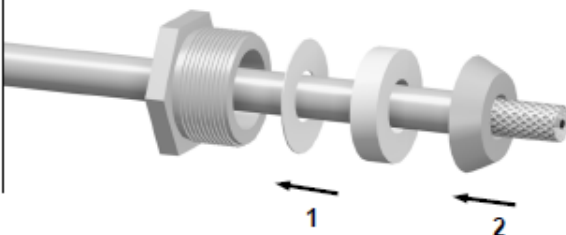
4

Slide the back nut over the cable assembly.



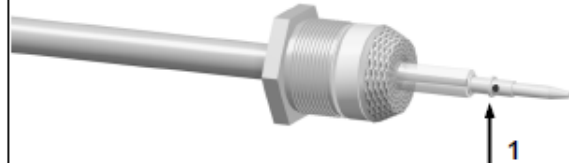
2

Slide the clamp nut, the washer and the gasket onto the cable.
Slide the clamp braid sleeve over the braid.



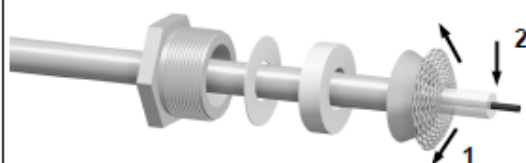
5

Solder the centre contact onto the inner conductor.



3

Fold the braid back and trim off the extra braid.
Trim dielectric back as shown in sketch 2.



6

Screw sub-assembly into the connector body with the adapted wrench.
Recommended coupling torque (see connector TDS).

