

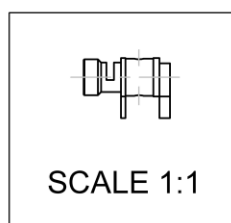
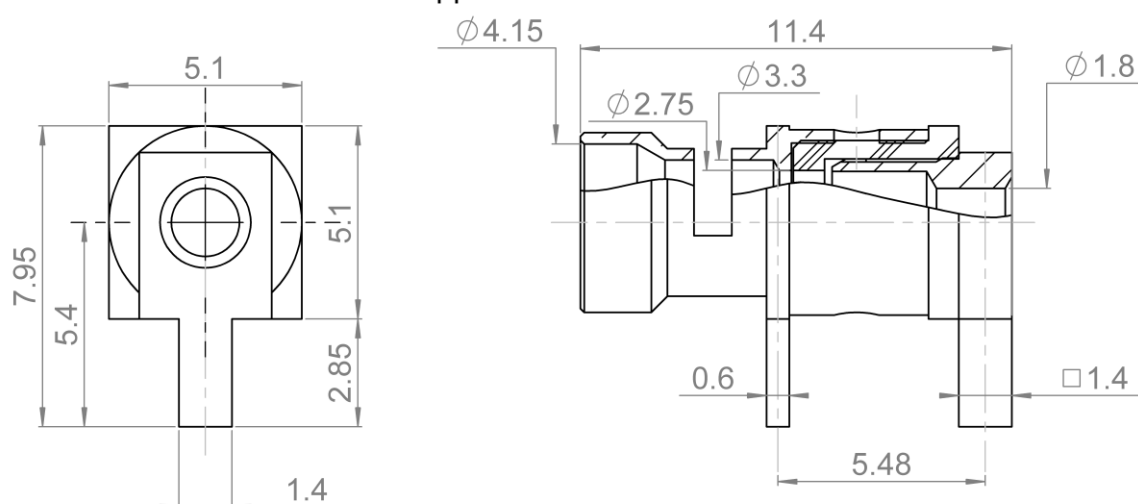
PAGE 1/3

ISSUE 30-06-15A

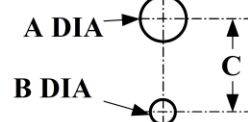
SERIES ACC-COAX

PART NUMBER R280229107

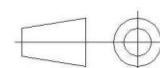
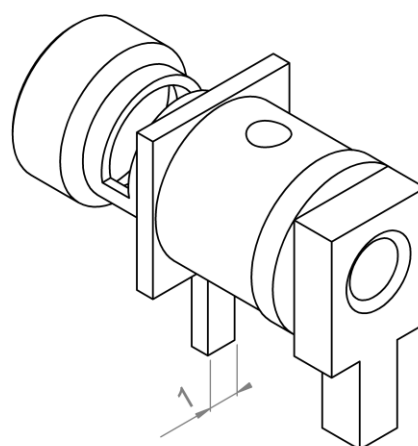
Distortion du champ magnétique
(distortion of the magnetic field)
 $\leq 0.5\text{ppm at } 10\text{mm at } B_0=1.5\text{Tesla}$



PANEL CUT OUT



	mm	
	Maxi	mini
A	2.30	2.20
B	1.60	1.50
C	5.53	5.43



All dimensions are in mm.

COMPONENTS	MATERIALS	PLATING (μm)
Body	NON MAGNETIC BRONZE	GOLD OVER COPPER
Center contact	NON MAGNETIC BRONZE	GOLD OVER COPPER
Outer contact		
Insulator	PTFE	
Gasket		
Others parts		
-	-	-
-	-	-

PAGE 2/3

ISSUE 30-06-15A

SERIES ACC-COAX

PART NUMBER R280229107

PACKAGING

Standard	Unit	Other
100	Contact us	Contact us

ELECTRICAL CHARACTERISTICS

Impedance	50	Ω
Frequency	0-3	GHz
VSWR	NA +	x F(GHz) Maxi
Insertion loss	NA	√F(GHz) dB Maxi
RF leakage	- (NA	- F(GHz)) dB Maxi
Voltage rating	TBD	Veff Maxi
Dielectric withstanding voltage	TBD	Veff mini
Insulation resistance	TBD	MΩ mini

MECHANICAL CHARACTERISTICS

Center contact retention	NA	N mini
Axial force – Mating End	NA	N mini
Axial force – Opposite end	NA	N.cm mini
Torque	NA	N.cm mini
Recommended torque		
Mating	NA	N.cm
Panel nut	NA	N.cm
Clamp nut	NA	N.cm
A/F clamp nut	NA	mm
Mating life	NA	Cycles mini
Weight	0.7810	g

ENVIRONMENTAL

Operating temperature	0/+90	°C
Hermetic seal	NA	Atm.cm3/s
Panel leakage	NA	

SPECIFICATION

CABLE ASSEMBLY

Stripping	a	b	c	d	e	f
mm	3	3.8	10.9	0	7.9	0

Assembly instruction:

Recommended cable(s)

GSC-02-60801-00

Characteristics indicated on this data sheet are those that can be achieved with the highest performance cable. Intrinsic limitations of the cable may diminish the performance of the assembly

Cable retention

- pull off	120	N mini
- torque	NA	N.cm

TOOLING

Part Number	Description	Hexagon

OTHER CHARACTERISTICS

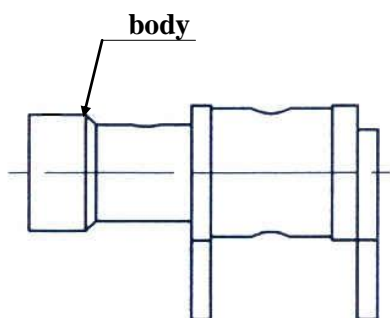
PAGE 3/3

ISSUE 30-06-15A

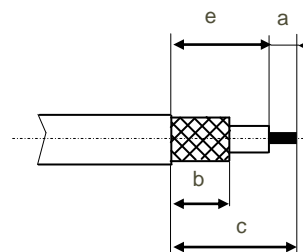
SERIES ACC-COAX

PART NUMBER R280229107

COMPOSANTS



STRIPPING DIMENSIONS



1

Strip the cable

2

Introduce cable into the connector body until contact with it
Solder braid
Solder cable core

