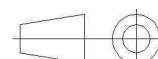
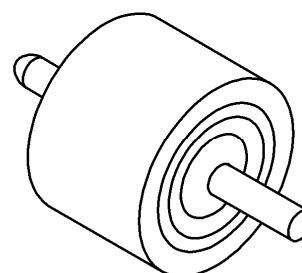
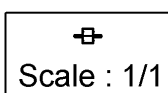
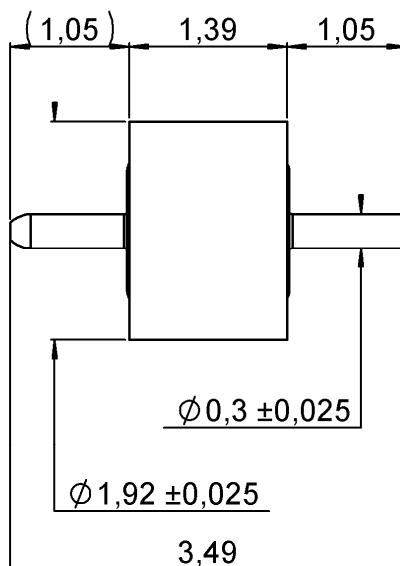


GLASS BEAD

DIA 0.3 MM

R280.760.230

Series : ACC-COAX



All dimensions are in mm.

COMPONENTS	MATERIALS	PLATING (μm)
BODY	DILVER P1	GOLD 1.3 OVER NICKEL2
CENTER CONTACT	DILVER P1	GOLD 1.3 OVER NICKEL2
OUTER CONTACT	-	-
INSULATOR	GLASS	-
GASKET	-	-
OTHERS PARTS	-	-

Operating temperature : -65/+165 °C

Weight : 0,1000 g

Others characteristics : Hermetic seal : 10-8 Atm.Cm3/s

Issue : 1302 A

In the effort to improve our products, we reserve the right to make changes judged to be necessary.

RADIAL