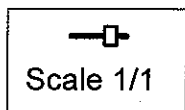
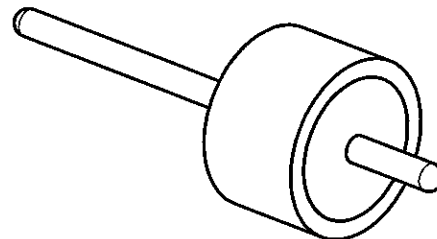
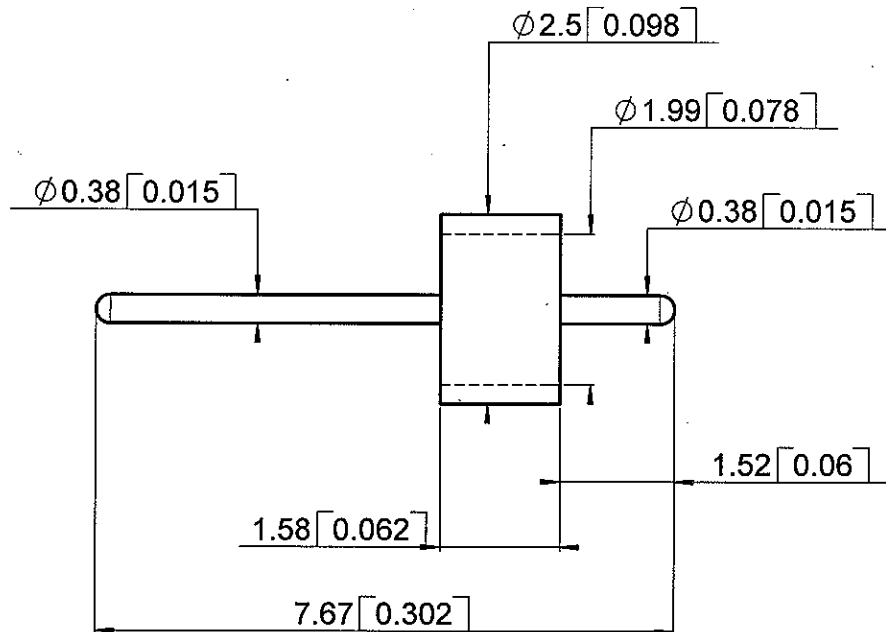


GLASS BEAD

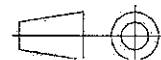
DIA 0.38 MM

R280.752.060

Series : ACC-COAX



All dimensions are in mm.



COMPONENTS	MATERIALS	PLATING (μm)
BODY	FERRO-NICKEL	GOLD 1.27 OVER NICKEL 1.27
CENTER CONTACT	FERRO-NICKEL	GOLD 1.27 OVER NICKEL 1.27
OUTER CONTACT	-	-
INSULATOR	GLASS	-
GASKET	-	-
OTHERS PARTS	-	-

Operating temperature : -65/+200 °C

Weight : 0,0900 g

Others characteristics : Hermetic seal 10-8 atm.cm3/s

Issue : 0818 A

In the effort to improve our products, we reserve the right to make changes judged to be necessary.



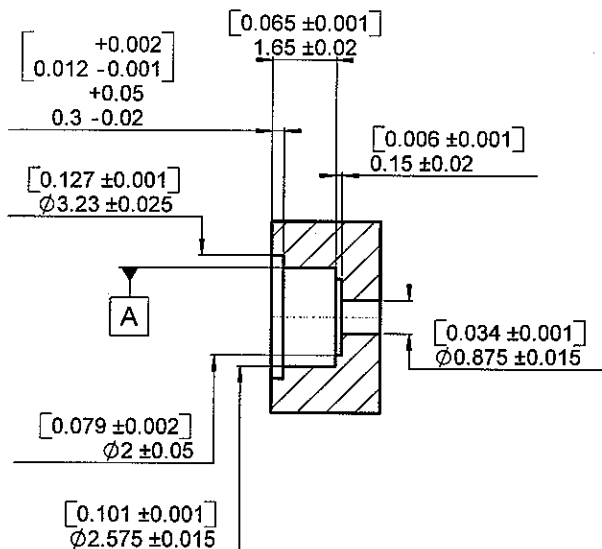
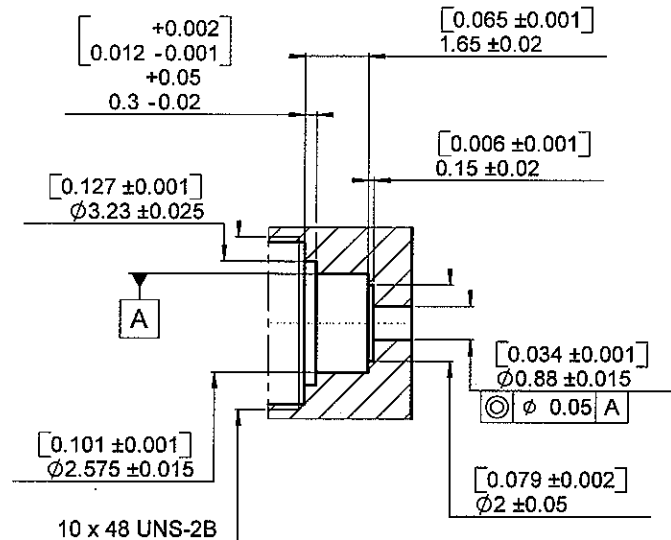
RADIALL®

GLASS BEAD

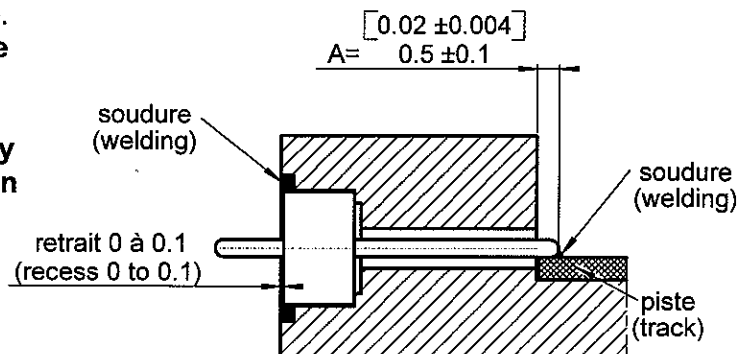
DIA 0.38 MM

R280.752.060

Series : ACC-COAX

MOUNTING INSTRUCTIONS**FLANGE RECEPTACLE****RECEPTACLE SCREW-TYPE****ASSEMBLY INSTRUCTIONS**

Introduce the glass bead into its housing.
 Weld the ring by putting a welding ring in the groove.
 Weld the glass bead pin on the track.
 (Beware there is not too much welding).
(For maximum RF characteristics the link track/pin must be as thin as possible. We advise therefore to follow the A dimension rigorously, by welding accurately the glass bead pin on the track).



Issue : 0818 A

In the effort to improve our products, we reserve the right to make changes judged to be necessary.

