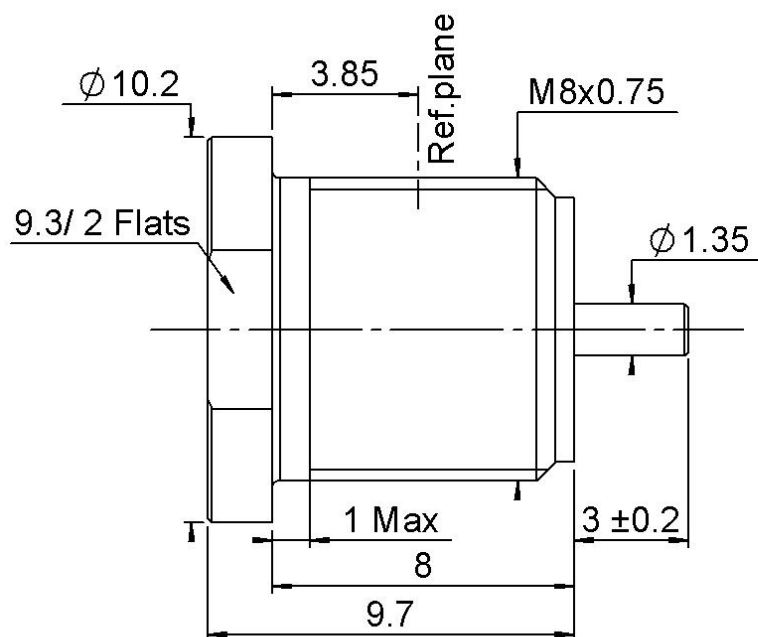


PAGE 1/2

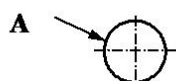
ISSUE 10-02-21A

SERIES **POWER-MAX**

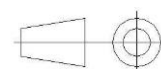
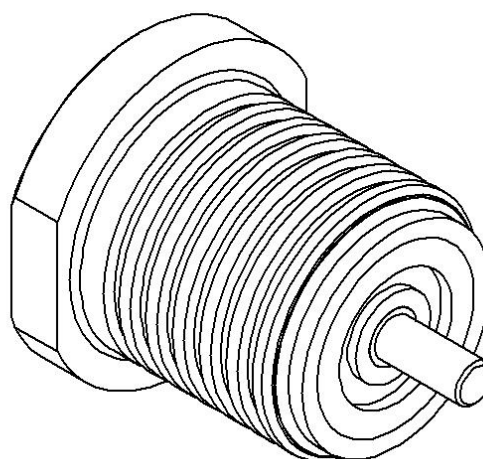
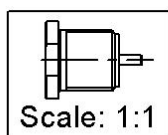
PART NUMBER **R233M11007**



**PANEL CUT OUT**



	mm
A	M8x0.75



All dimensions are in mm. Tolerances according ISO 2768 m-H

COMPONENTS	MATERIALS	PLATING (μm)
Body	<b>BRASS</b>	<b>BBR</b>
Center contact	<b>BRASS</b>	<b>NPGR.</b>
Outer contact		
Insulator	<b>PLASTIC</b>	
Gasket		
Others parts		
-	-	-
-	-	-

PAGE 2/2	ISSUE 10-02-21A	SERIES POWER-MAX	PART NUMBER R233M11007
----------	-----------------	------------------	------------------------

#### PACKAGING

Standard	Unit	Other
100	Contact us	Contact us

#### ELECTRICAL CHARACTERISTICS

Impedance	50	Ω
Frequency	0-6	GHz
VSWR	1.196* ** +	0 x F(GHz) Maxi
Insertion loss	* ***	√F(GHz) dB Maxi
RF leakage	- ( NA	- F(GHz)) dB Maxi
Voltage rating	335	Veff Maxi
Dielectric withstanding voltage	1000	Veff mini
Insulation resistance	5000	MΩ mini

#### MECHANICAL CHARACTERISTICS

Center contact retention		
Axial force – Mating End	10	N mini
Axial force – Opposite end	10	N mini
Torque	NA	N.cm mini

Recommended torque		
Mating	NA	N.cm
Panel nut	NA	N.cm

Mating life	100	Cycles mini
Nominal Weight (Add +15% for max weight)	2,64	g

#### ENVIRONMENTAL

Operating temperature	-55/+165	°C
Hermetic seal	NA	Atm.cm3/s
Panel leakage	NA	

#### SPECIFICATION

#### OTHER CHARACTERISTICS

Assembly instruction: NA

Others:

**Power handling** ≥160W @2.7GHz at 105°C, long term (≥10years)  
**PIM3** ≤-160dBc @2\*20W

**\*Coaxial Transmission Line Only (Slide side+Bullet+Snap side)**

**Radial working angle** : 4° min

**Axial working range** : +/-1 mm

**\*\*VSWR**: up to 3 GHz; 3-5GHz, 1.253max, 5-6GHz, 1.33max

**\*\*\*IL** ≤0.12dB @0~3GHz, ≤0.25dB @3~6GHz