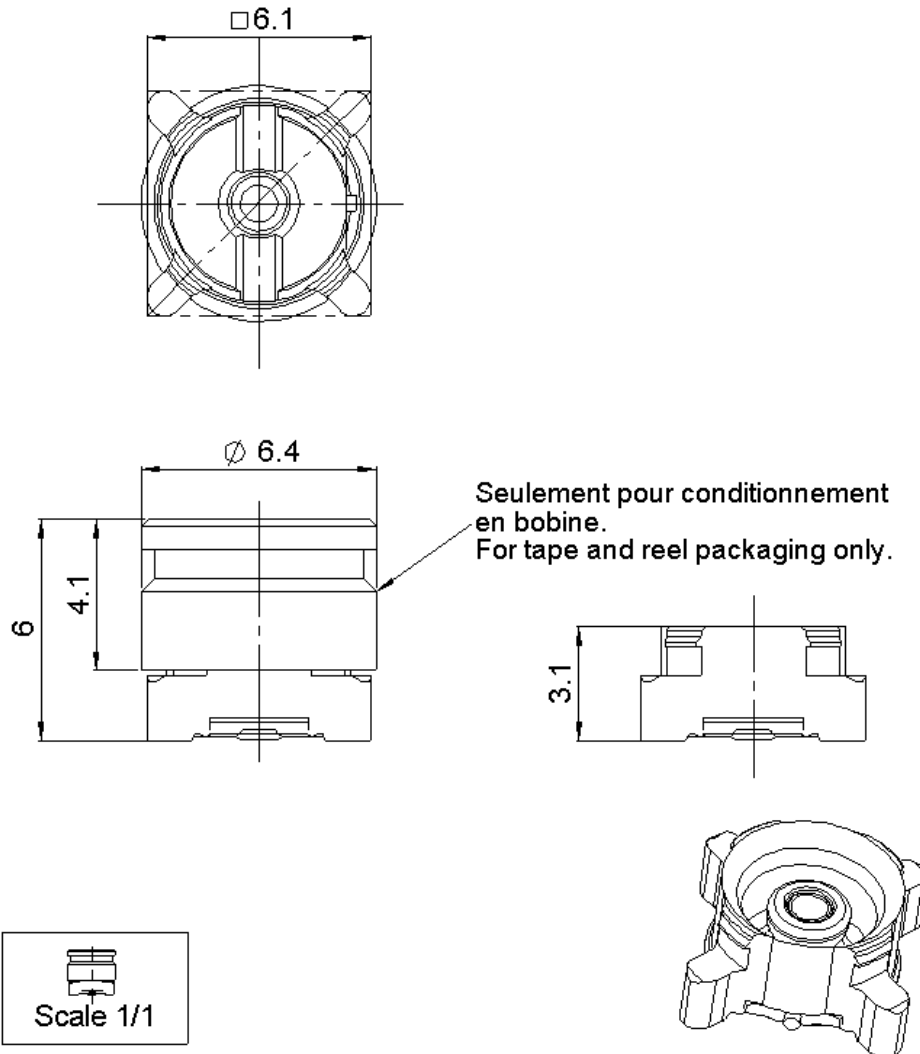
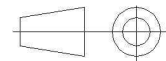


SMT JACK RECEPTACLE
REEL OF 750
R223.424.860

Series : MMBX



All dimensions are in mm.



COMPONENTS	MATERIALS	PLATING (μm)
BODY	BRASS	NPGR
CENTER CONTACT	BRASS	NPGR
OUTER CONTACT		
INSULATOR	POLYMERE A CRISTAUX LIQUIDES	
GASKET	PTFE	
OTHERS PARTS		
-	-	-
-	-	-

Issue : 0920 B

In the effort to improve our products, we reserve the right to make changes judged to be necessary.

RADIAL

SMT JACK RECEPTACLE**REEL OF 750****R223.424.860**

Series : MMBX

PACKAGING

Standard	Unit	Other
750	'W' option	Contact us

SPECIFICATION**ELECTRICAL CHARACTERISTICS**

Impedance	50	Ω
Frequency	0-12.4	GHz
VSWR	1.065* + 0,0000	x F(GHz) Maxi
Insertion loss	0.12	$\sqrt{F}(\text{GHz})$ dB Maxi
RF leakage	- (100**	- F(GHz)) dB Maxi
Voltage rating	330	Veff Maxi
Dielectric withstanding voltage	1000	Veff mini
Insulation resistance	1000	M Ω mini

ENVIRONMENTAL

Operating temperature	-55/+155	$^{\circ}\text{C}$
Hermetic seal	NA	Atm.cm3/s
Panel leakage	NA	

OTHER CHARACTERISTICS

Assembly instruction

Others :

*to 6 GHz

**interface MMBX only up to 2.5 GHz

PCB to PCB -45 dB up to 2.5 GHz

MECHANICAL CHARACTERISTICS

Center contact retention	
Axial force – Mating end	10 N mini
Axial force – Opposite end	10 N mini
Torque	NA N.cm mini
Recommended torque	
Mating	NA N.cm
Panel nut	NA N.cm
Mating life	100 Cycles mini
Weight	0,3670 g

Issue : 0920 B

In the effort to improve our products, we reserve the right to make changes judged to be necessary.

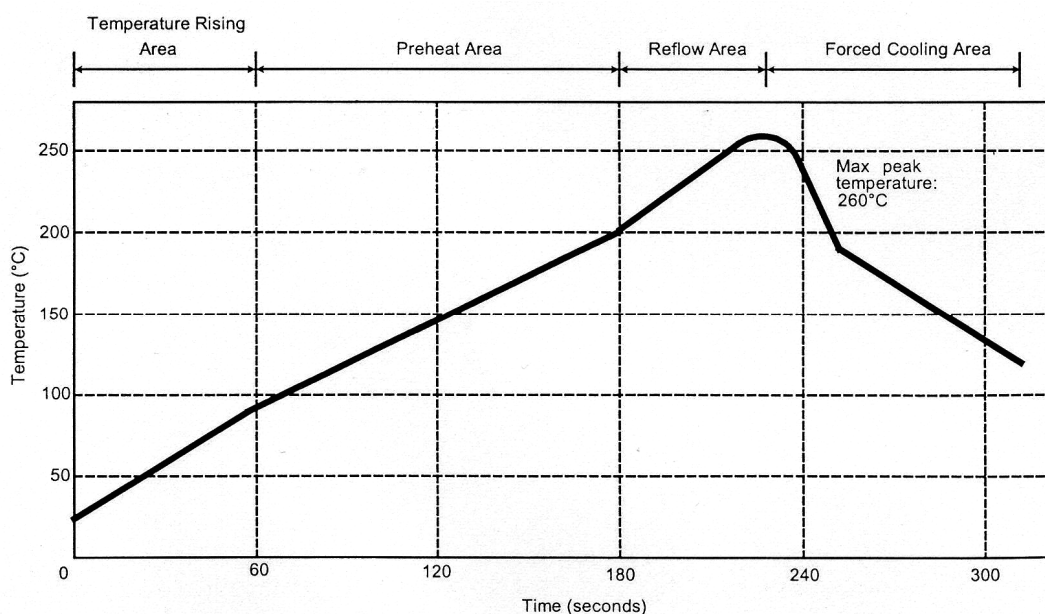
RADIAL 

SMT JACK RECEPTACLE**REEL OF 750****R223.424.860**

Series : MMBX

SOLDER PROCEDURE OF MMBX RECEPTACLE IN INDUSTRIAL ENVIRONMENT

1. Deposit solder paste 'Sn95 Ag4 Cu0.5' on mounting zone by screen printing application.
We recommend a low residue flux.
We advise a thickness of 150 micromm (5.850 microinch). Verify that the edges of the zone are clean.
2. Placement of the receptacle on the mounting zone with an automatic machine of 'pick and place' type.
A video camera is recommended for positioning of the component.
Adhesive agents must not be used on the receptacle.
3. This process of soldering has been tested with convection oven.
Below please find, the typical profile to use.
4. The cleaning of printed circuit boards is not obliged.
5. Verification of solder joints and position of the component by visual inspection.

**TEMPERATURE PROFIL**

Parmeter	Value	Unit
Temperature rising Area	1 - 4	°C/sec
Max Peak Temperature	260	°C
Max dwell time @260°C	10	sec
Min dwell time @235°C	20	sec
Max dwell time @235°C	60	sec
Temperature drop in cooling Area	-1 to - 4	°C/sec
Max dwell time above 100°C	420	sec

Issue : 0920 B

In the effort to improve our products, we reserve the right to make changes judged to be necessary.

RADIAL 

SMT JACK RECEPTACLE

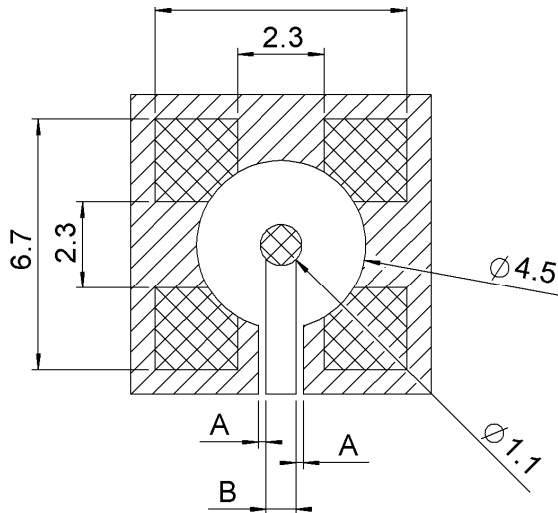
REEL OF 750

R223.424.860

Series : MMBX

MMBX SERIES INFORMATIONS

PCB

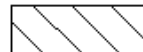


COPLANAR LINE

Pattern and signal are on the same side
The material of PCB is epoxy resin (FR4)

. (Er = 4.6)

The solder resist should be printed
Except for the land pattern on the PCB



Pattern



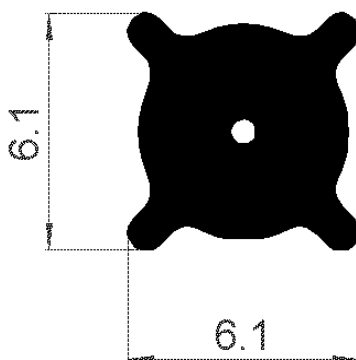
APPLICATION 75Ω
WITH B = 0,55mm

PCB thickness (mm)	Coplanar ligne A (mm)
0,8	0,350
1,0	0,360
1,2	0,365
1,6	0,375

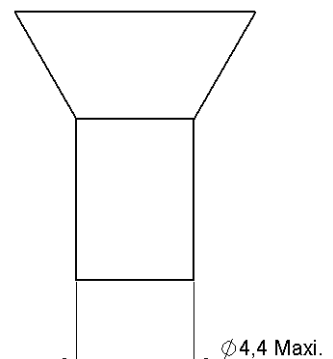
APPLICATION 50Ω
WITH B = 1,2mm

PCB thickness (mm)	Coplanar ligne A (mm)
0,8	0,190
1,0	0,200
1,2	0,205
1,6	0,210

SHADOW FOR VIDEO CAMERA



ASPIRATION PORT

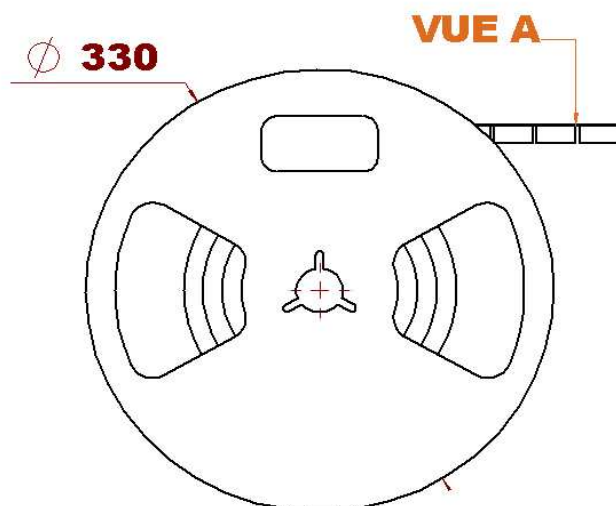


Issue : 0920 B

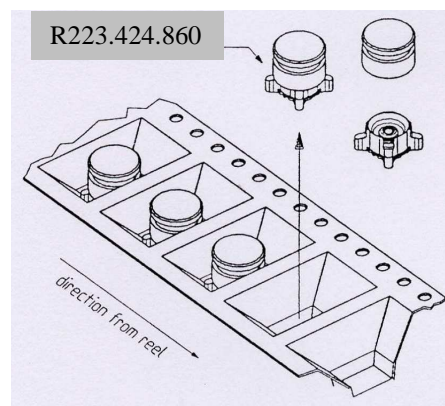
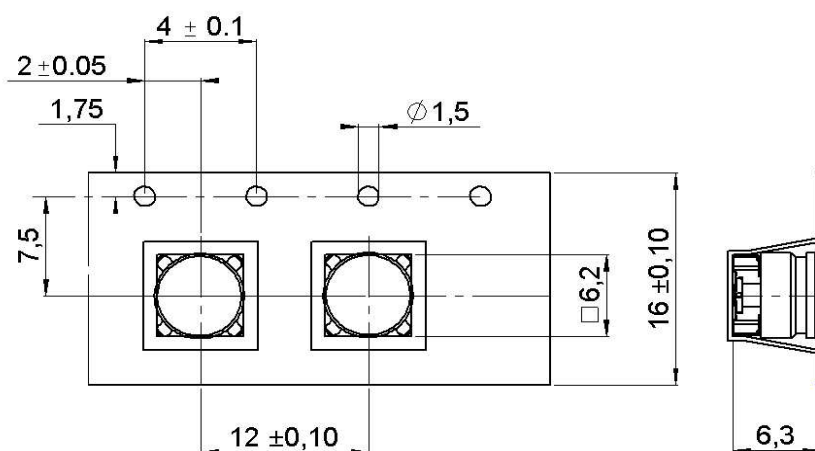
In the effort to improve our products, we reserve the right to make changes judged to be necessary.

RADIAL

R223.424.860

Series : **MMBX**

A VIEW



In the effort to improve our products, we reserve the right to make changes judged to be necessary.

RADIAL 