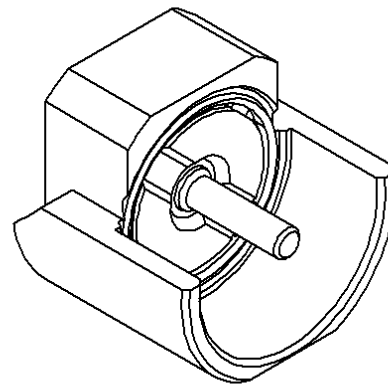
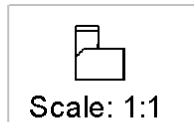
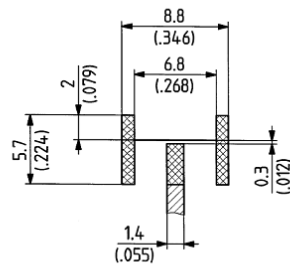
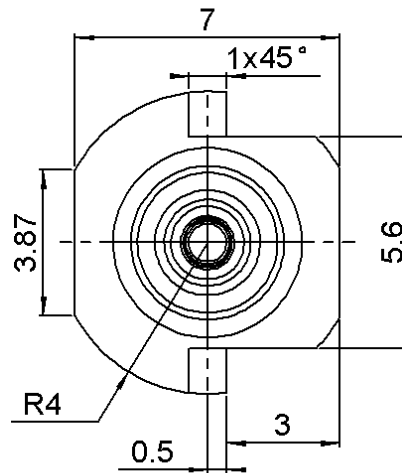
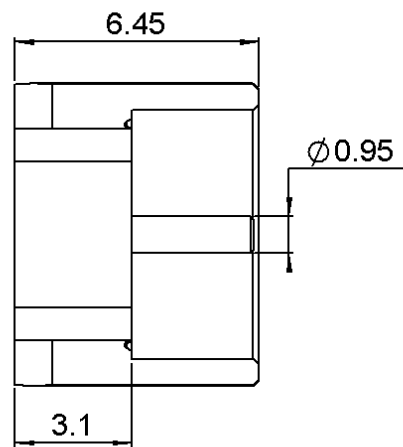


STRAIGHT FEMALE RECEPTACLE FOR PCB

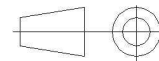
SMT TYPE-EDGE CARD

R223.423.800

Series : MMBX



All dimensions are in mm.



COMPONENTS	MATERIALS	PLATING (μm)
BODY	BRASS	NPGR
CENTER CONTACT	BRASS	NPGR
OUTER CONTACT		
INSULATOR	LIQUID CRYSTAL POLYMER,PTFE	
GASKET		
OTHERS PARTS		
-	-	-
-	-	-

Issue : 0952 A

In the effort to improve our products, we reserve the right to make changes judged to be necessary.

RADIAL 

STRAIGHT FEMALE RECEPTACLE FOR PCB**R223.423.800****SMT TYPE-EDGE CARD**

Series : MMBX

PACKAGING

Standard	Unit	Other
650	'W' option	Contact us

SPECIFICATION**ELECTRICAL CHARACTERISTICS**

Impedance	50	Ω
Frequency	0-12.4	GHz
VSWR	*1.065 + 0.0000	x F(GHz) Maxi
Insertion loss	0.12	$\sqrt{F}(\text{GHz})$ dB Maxi
RF leakage	- (**100)	- F(GHz)) dB Maxi
Voltage rating	330	Veff Maxi
Dielectric withstanding voltage	1000	Veff mini
Insulation resistance	1000	M Ω mini

ENVIRONMENTAL

Operating temperature	-55/+155	$^{\circ}\text{C}$
Hermetic seal	NA	Atm.cm3/s
Panel leakage	NA	

OTHER CHARACTERISTICS

Assembly instruction

Others :

*To 6GHz

**interface MMBX only up to 2.5GHz

MECHANICAL CHARACTERISTICS

Center contact retention	
Axial force – Mating end	10 N mini
Axial force – Opposite end	10 N mini
Torque	NA N.cm mini
Recommended torque	
Mating	NA N.cm
Panel nut	NA N.cm
Mating life	100 Cycles mini
Weight	1.0010 g

Issue : 0952 A

In the effort to improve our products, we reserve the right to make changes judged to be necessary.

RADIAL 

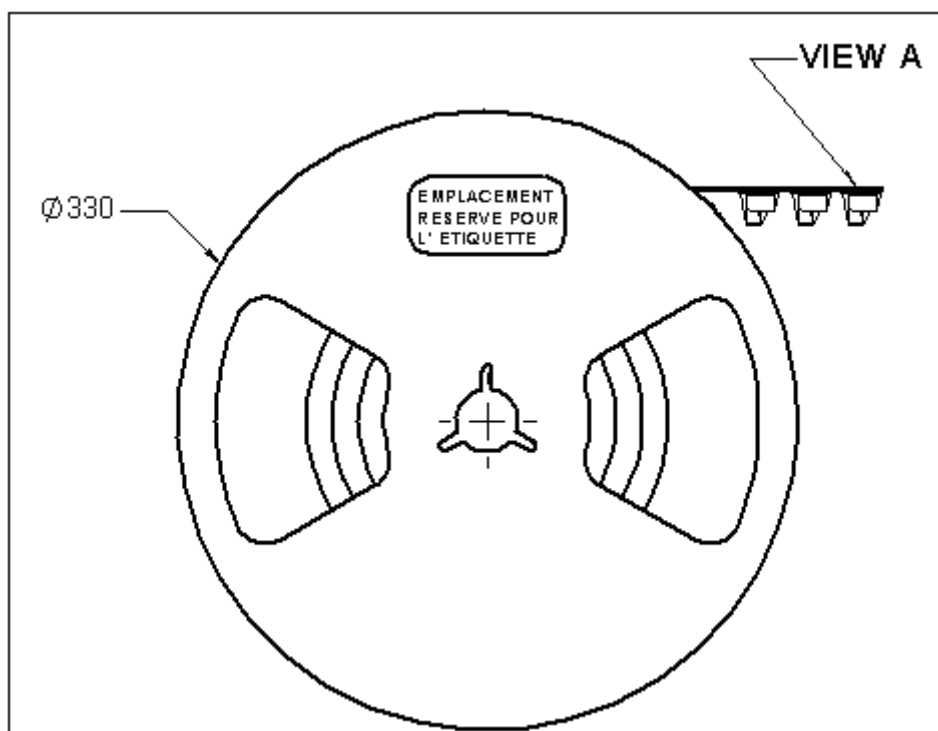
STRAIGHT FEMALE RECEPTACLE FOR PCB

SMT TYPE-EDGE CARD

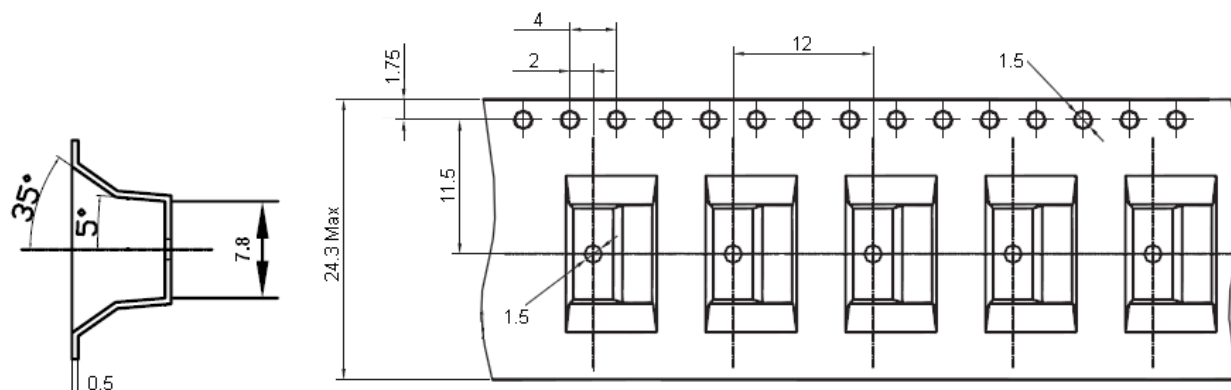
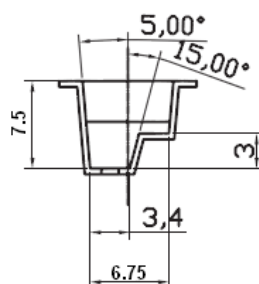
R223.423.800

Series : MMBX

MMBX SERIES INFORMATIONS



VIEW A



Issue : 0952 A

In the effort to improve our products, we reserve the right to make changes judged to be necessary.

RADIAL 