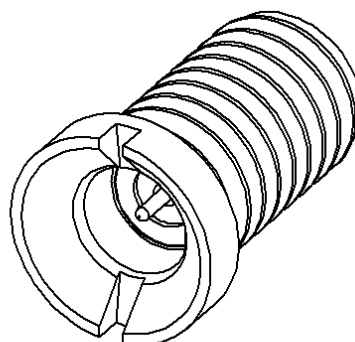
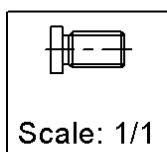
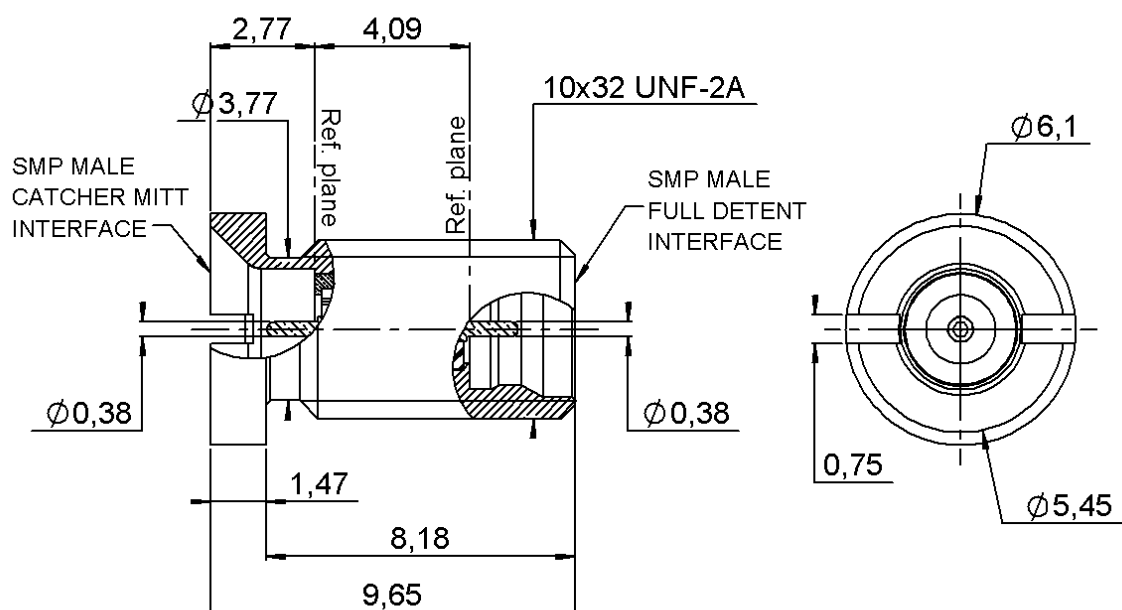


PAGE 1/3

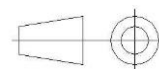
ISSUE **21-10-18A**

SERIES **SMP**

PART NUMBER **R222743021**



All dimensions are in mm. Tolerances according ISO 2768 m-H



COMPONENTS	MATERIALS	PLATING (μm)
Body	ST. STEEL (316L)	PASSIVATED
Center contact	BERYLLIUM COPPER	GOLD OVER NICKEL
Outer contact		
Insulator	PTFE	
Gasket		
Others parts	BRASS	GOLD OVER NICKEL
-	-	-
-	-	-

PAGE 2/3

ISSUE **21-10-18A**

SERIES **SMP**

PART NUMBER **R222743021**

PACKAGING

Standard	Unit	Other
100	Contact us	Contact us

ELECTRICAL CHARACTERISTICS

Impedance	50	Ω
Frequency	0-40	GHz
VSWR	* + 0,0000	x F(GHz) Maxi
Insertion loss	0.12	\sqrt{F} (GHz) dB Maxi
RF leakage	- (**	- F(GHz)) dB Maxi
Voltage rating	335	Veff Maxi
Dielectric withstanding voltage	500	Veff mini
Insulation resistance	5000	M Ω mini

MECHANICAL CHARACTERISTICS

Center contact retention		
Axial force – Mating End	3	N mini
Axial force – Opposite end	6.68	N mini
Torque	NA	N.cm mini

Recommended torque		
Mating	NA	N.cm
Panel nut	60	N.cm

Mating life	0	Cycles mini
Nominal Weight	0,7100	g
(Add +15% for max weight)		

ENVIRONMENTAL

Operating temperature	-65/+165	°C
Hermetic seal	NA	Atm.cm3/s
Panel leakage	NA	

SPECIFICATION

OTHER CHARACTERISTICS

Assembly instruction:

Others:

***VSWR:1.15 DC-18GHz_1.25 18 to 26.5GHz**

**** -80dB 0-3GHz -65dB 3 to 26.5 GHz**

*****1000 cycles for SMP SB_100 for SMP FD**

PAGE 3/3

ISSUE 21-10-18A

SERIES **SMP**

PART NUMBER **R222743021**

RECOMMENDED MOUNTING HOLE

