

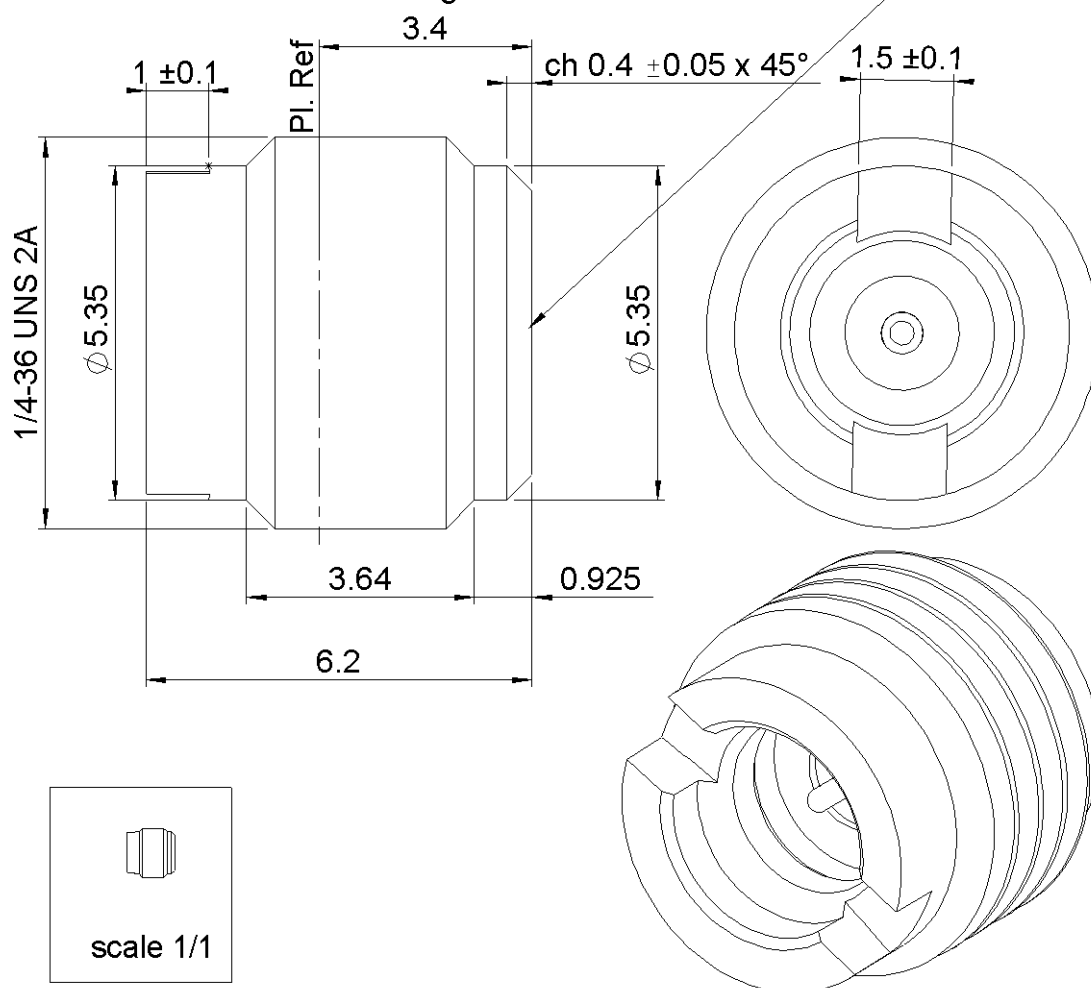
PAGE 1/2

ISSUE 26-11-15A

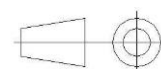
SERIES SMP

PART NUMBER R222562021

Douille pour broche ϕ 0.3 se monte en application avec la perle de verre R280.760
 Socket for pin DIA .012 Mounting in application with the R280.760 glass bead.



All dimensions are in mm.



COMPONENTS	MATERIALS	PLATING (μ m)
Body	STAINLESS STEEL	PASSIVATED
Center contact	BERYLLIUM COPPER	GOLD OVER NICKEL
Outer contact	-	-
Insulator	PTFE	-
Gasket	-	-
Others parts	-	-
-	-	-
-	-	-

PAGE 2/2

ISSUE 26-11-15A

SERIES SMP

PART NUMBER R222562021

PACKAGING

Standard	Unit	Other
100	Contact us	Contact us

ELECTRICAL CHARACTERISTICS

Impedance		50	Ω
Frequency		0-40	GHz
VSWR	1.30 +	0.0000	x F(GHz) Maxi
Insertion loss		0.10	√F(GHz) dB Maxi
RF leakage	- (- F(GHz) dB Maxi
Voltage rating		335	Veff Maxi
Dielectric withstanding voltage		500	Veff mini
Insulation resistance		5000	MΩ mini

MECHANICAL CHARACTERISTICS

Center contact retention			
Axial force – Mating End		3	N mini
Axial force – Opposite end		6.68	N mini
Torque		NA	N.cm mini
Recommended torque			
Mating		NA	N.cm
Panel nut		90	N.cm
Mating life		500	Cycles mini
Weight		1.0200	g

ENVIRONMENTAL

Operating temperature	-65/+165	°C
Hermetic seal	NA	Atm.cm3/s
Panel leakage	NA	

SPECIFICATION

OTHER CHARACTERISTICS

Assembly instruction:

Others: