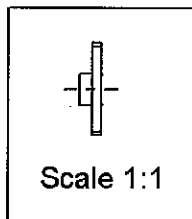
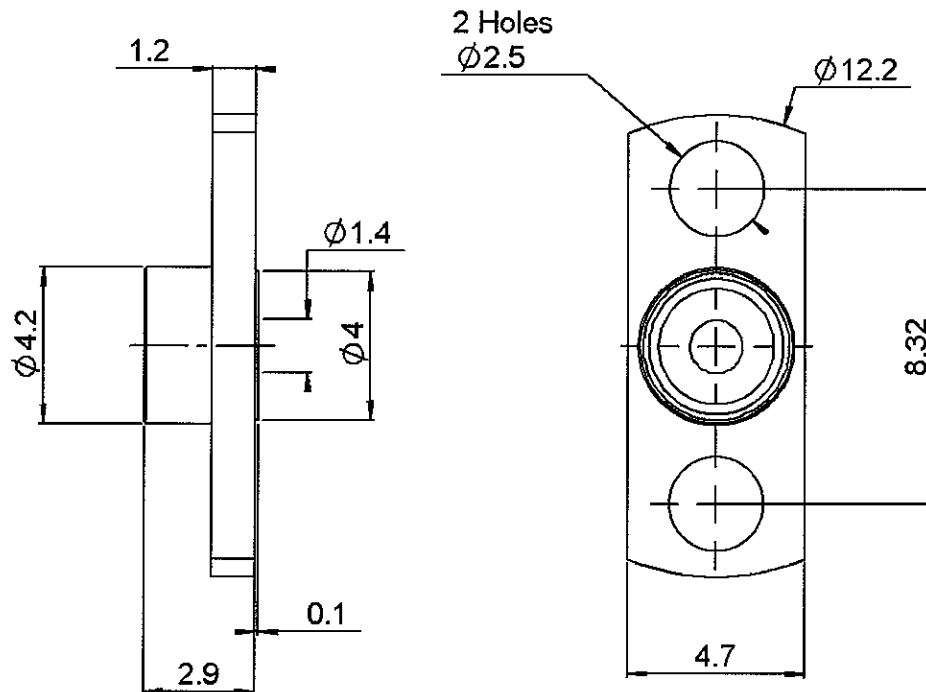


TWO HOLE FLANGE SHROUD 0.4MM

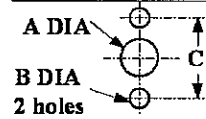
LIMITED DETENT

R222.450.301

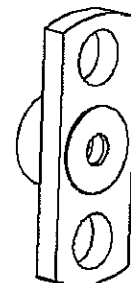
Series : SMP



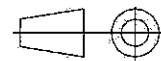
PANEL CUT OUT



	mm	
	Maxi	mini
A	4.15	4.05
B	2.60	2.50
C	8.38	8.28



All dimensions are in mm.



COMPONENTS	MATERIALS	PLATINGS (μm)
BODY	STAINLESS STEEL	PASSIVATED . PASSIVATED.
CENTER CONTACT	-	-
OUTER CONTACT	-	-
INSULATOR	-	-
GASKET	-	-
OTHERS PARTS	-	-
-	-	-
-	-	-

Issue : 0529 B

In the effort to improve our products, we reserve the right to make changes judged to be necessary.



TWO HOLE FLANGE SHROUD 0.4MM**LIMITED DETENT****R222.450.301**

Series : SMP

PACKAGING**SPECIFICATION**

Standard	Unit	Other
100	'W' option	Contact us

ELECTRICAL CHARACTERISTICS

Impedance	NA	Ω
Frequency	NA	GHz
VSWR	NA +	0.000 x F(GHz) Maxi
Insertion loss	NA	\sqrt{F} (GHz) dB Maxi
RF leakage	NA - (F(GHz)) dB Maxi
Voltage rating	NA	Veff Maxi
Dielectric withstanding voltage	NA	Veff mini
Insulation resistance	NA	M Ω mini

ENVIRONMENTAL

Operating temperature	-65/+165 °C
Hermetic seal	NA Atm.cm3/s
Panel leakage	NA

OTHERS CHARACTERISTICS

Assembly instruction

Others :

MECHANICAL CHARACTERISTICS

Centre contact retention	
Axial force – Mating end	NA N mini
Axial force – Opposite end	NA N mini
Torque	NA N.cm mini
Recommended torque	
Mating	NA N.cm
Panel nut	NA N.cm
Mating life	500 Cycles mini
Weight	0.427 g

Issue : 0529 B

In the effort to improve our products, we reserve the right to make changes judged to be necessary.

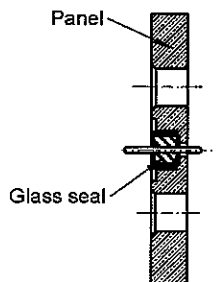
**RADIALL®**

TWO HOLE FLANGE SHROUD 0.4MM**LIMITED DETENT****R222.450.301**

Series : SMP

**ADDITIONAL INFORMATION
MOUNTING INSTRUCTIONS**

1. Check the quality of the soldering, as well as the position of the glass seal in the package.

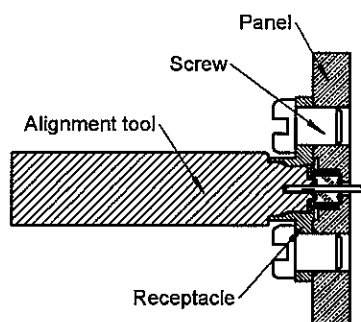


2. Place the receptacle and pre-assemble screw on the package.

Mount the alignment tool R2821.860.022 into the flange to ensure a good concentricity.

Screw the receptacle on the package.

Remove the aligning positioner.

**Issue : 0529 B**

In the effort to improve our products, we reserve the right to make changes judged to be necessary.

**RADIALL®**