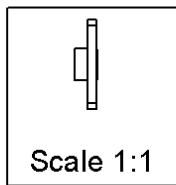
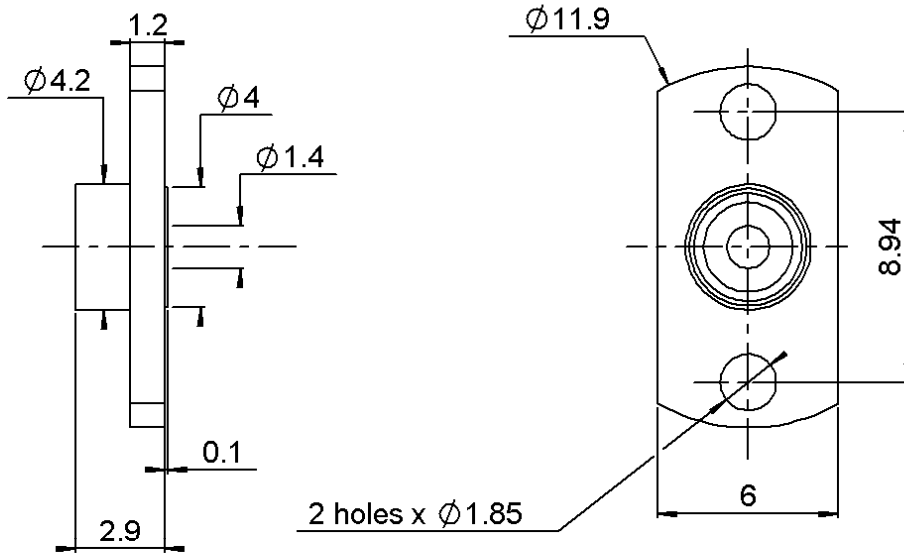


TWO HOLE FLANGE SHROUD 0.4MM

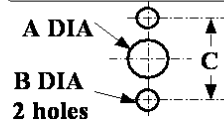
R222.450.031

FULL DETENT

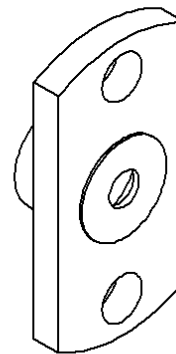
Series : SMP



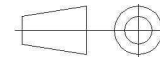
PANEL CUT OUT



	mm	
	Maxi	mini
A	4.15	4.05
B	1.90	1.80
C	8.99	8.89



All dimensions are in mm.



COMPONENTS	MATERIALS	PLATINGS (µm)
BODY	INOX	PASSIVE
CENTER CONTACT		
OUTER CONTACT		
INSULATOR		
GASKET		
OTHERS PARTS		
-	-	-
-	-	-

Issue : 0529 B

In the effort to improve our products, we reserve the right to make changes judged to be necessary.



TWO HOLE FLANGE SHROUD 0.4MM**FULL DETENT****R222.450.031**

Series : SMP

PACKAGING

Standard	Unit	Other
100	'W' option	Contact us

SPECIFICATION**ELECTRICAL CHARACTERISTICS**

Impedance	NA	Ω
Frequency	NA	GHz
VSWR	NA + 0,0000	x F(GHz) Maxi
Insertion loss	NA	$\sqrt{F}(\text{GHz})$ dB Maxi
RF leakage	- (NA	- F(GHz)) dB Maxi
Voltage rating	NA	Veff Maxi
Dielectric withstanding voltage	NA	Veff mini
Insulation resistance	NA	M Ω mini

ENVIRONMENTAL

Operating temperature	-65/165	$^{\circ}\text{C}$
Hermetic seal	NA	Atm.cm3/s
Panel leakage	NA	

OTHERS CHARACTERISTICS

Assembly instruction

Others :

MECHANICAL CHARACTERISTICS

Center contact retention	
Axial force – Mating end	NA N mini
Axial force – Opposite end	NA N mini
Torque	NA N.cm mini
Recommended torque	
Mating	NA N.cm
Panel nut	NA N.cm
Mating life	100 Cycles mini
Weight	0,5800 g

Issue : 0529 B

In the effort to improve our products, we reserve the right to make changes judged to be necessary.

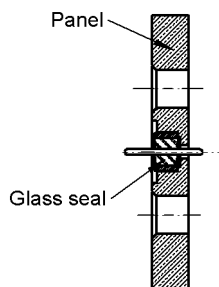
**RADIALL®**

TWO HOLE FLANGE SHROUD 0.4MM**FULL DETENT****R222.450.031**

Series : SMP

**ADDITIONAL INFORMATION
MOUNTING INSTRUCTIONS**

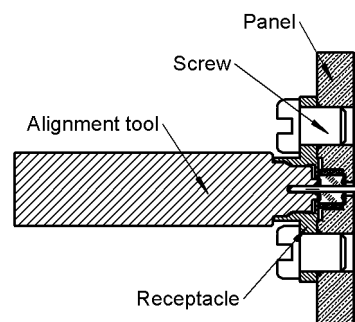
1. Check the quality of the soldering, as well as the position of the glass seal in the package .



2. Place the receptacle and pre-assemble screw on the package.

Mount the aligning tool R2821.860.020 into the flange to ensure a good concentricity.

Screw the receptacle on the package
Remove the aligning tool.

**Issue : 0529 B**

In the effort to improve our products, we reserve the right to make changes judged to be necessary.

