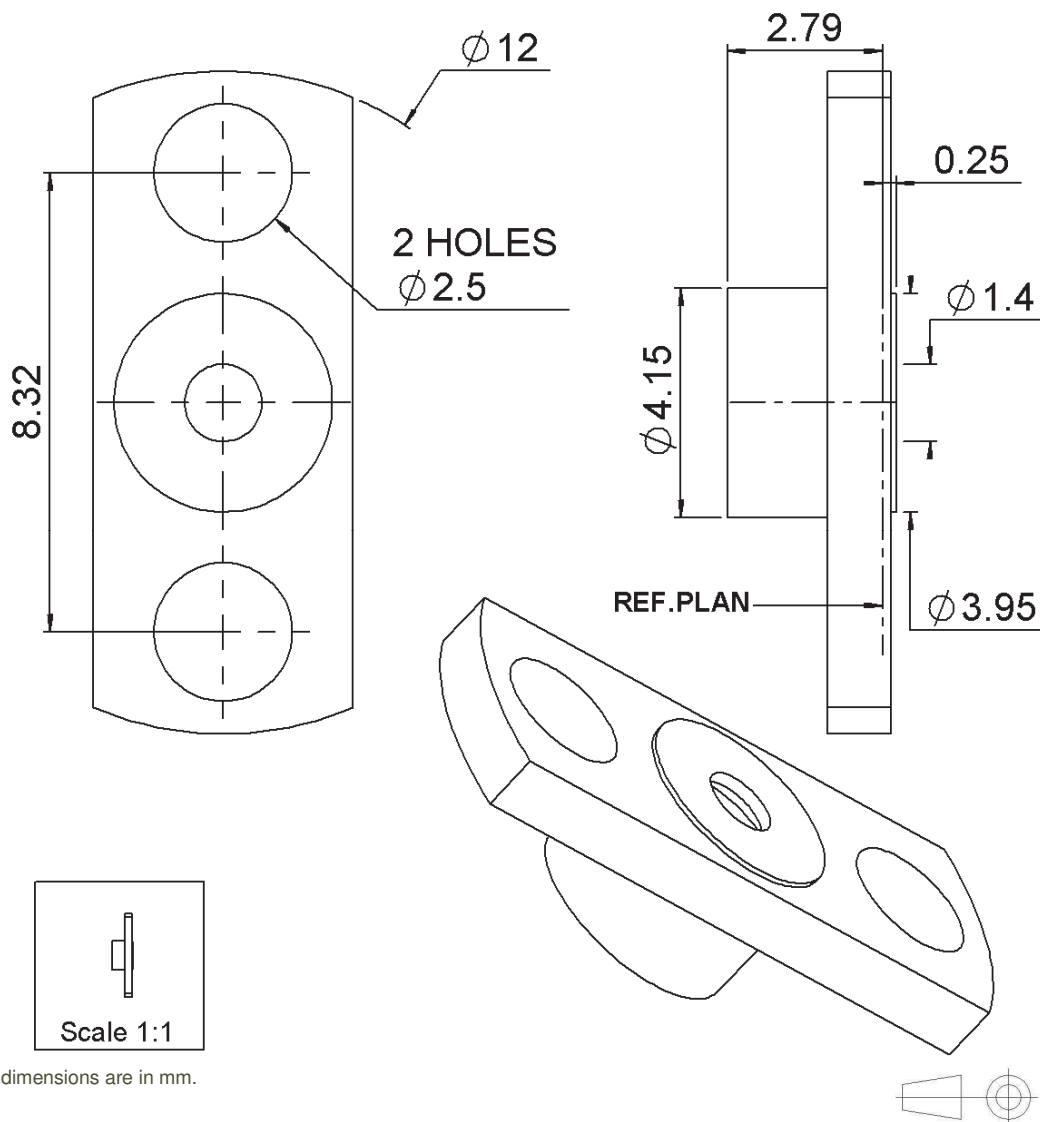


PAGE 1/3

ISSUE **1334B**

SERIES **SMP**

PART NUMBER **R222450001**



All dimensions are in mm.

| COMPONENTS | MATERIALS | PLATING (μm) |
|----------------|------------------------|-------------------|
| Body | STAINLESS STEEL | PASSIVATED |
| Center contact | - | - |
| Outer contact | - | - |
| Insulator | - | - |
| Gasket | - | - |
| Others parts | - | - |
| - | - | - |
| - | - | - |

PAGE 2/3

ISSUE **1334B**

SERIES **SMP**

PART NUMBER **R222450001**

PACKAGING

| Standard | Unit | Other |
|------------|-------------------|-------------------|
| 100 | Contact us | Contact us |

ELECTRICAL CHARACTERISTICS

| | | | |
|---------------------------------|-----------|-----------|-----------------------------|
| Impedance | | NA | Ω |
| Frequency | | NA | GHz |
| VSWR | NA | + | 0.0000 x F(GHz) Maxi |
| Insertion loss | | NA | \sqrt{F} (GHz) dB Maxi |
| RF leakage | - (| NA | - F(GHz)) dB Maxi |
| Voltage rating | | NA | Veff Maxi |
| Dielectric withstanding voltage | | NA | Veff mini |
| Insulation resistance | | NA | M Ω mini |

MECHANICAL CHARACTERISTICS

| | | | |
|----------------------------|--|---------------|-------------|
| Center contact retention | | | |
| Axial force – Mating End | | NA | N mini |
| Axial force – Opposite end | | NA | N mini |
| Torque | | NA | N.cm mini |
| Recommended torque | | | |
| Mating | | NA | N.cm |
| Panel nut | | NA | N.cm |
| Mating life | | 100 | Cycles mini |
| Weight | | 0.4200 | g |

ENVIRONMENTAL

| | | |
|-----------------------|-----------------|-----------|
| Operating temperature | -65/+165 | °C |
| Hermetic seal | NA | Atm.cm3/s |
| Panel leakage | NA | |

SPECIFICATION

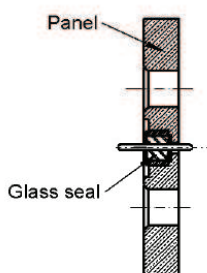
OTHER CHARACTERISTICS

Assembly instruction:

Others:

ADDITIONAL INFORMATION MOUNTING INSTRUCTIONS

1. Check the quality of the soldering, as well as the position of the glass seal in the package .



2. Place the receptacle and pre-assemble screw on the package.

Mount the aligning tool R2821.860.020 into the flange to ensure a good concentricity.

Screw the receptacle on the package
Remove the aligning tool.

