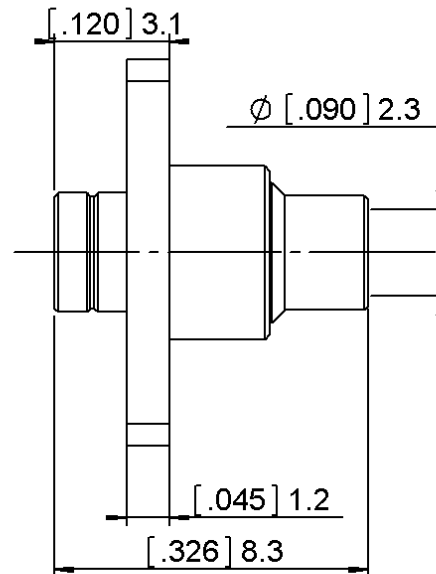
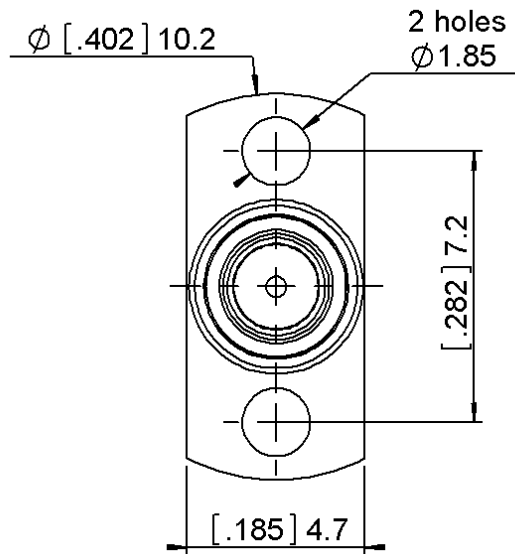


TWO HOLE FLANGE CONNECTOR MALE

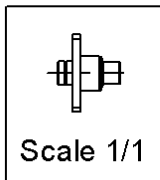
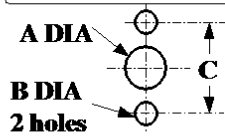
FULL DETENT SOLDER TYPE CAB .086

R201.223.100

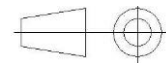
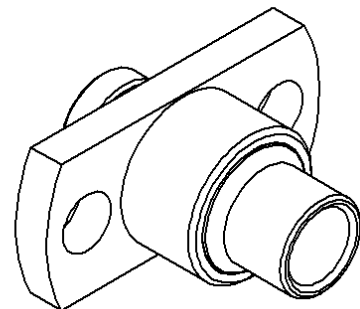
Series : SMPM



PANEL CUT OUT



	mm	
	Maxi	mini
A	4.8	4.7
B	1.9	1.8
C	7.2	7.1



All dimensions are in mm.

COMPONENTS

MATERIALS

PLATING (μm)

BODY
CENTER CONTACT
OUTER CONTACT
INSULATOR
GASKET
OTHERS PARTS

STAINLESS STEEL + BRASS
BERYLLIUM COPPER
PTFE

PASSIVATED + GOLD 1.27 OVER NICKEL 2
GOLD 1.3 OVER NICKEL 2

Issue : 1232 A

In the effort to improve our products, we reserve the right to make changes judged to be necessary.

RADIAL

TWO HOLE FLANGE CONNECTOR MALE**FULL DETENT SOLDER TYPE CAB .086****R201.223.100**

Series : SMPM

PACKAGING

Standard	Unit	Other
	'W' option	Contact us

ELECTRICAL CHARACTERISTICS

Impedance	50	Ω
Frequency	0-40	GHz
VSWR	1.50 + 0.0000	x F(GHz) Maxi
Insertion loss	0.12	$\sqrt{F}(\text{GHz})$ dB Maxi
RF leakage	- (- F(GHz)) dB Maxi
Voltage rating	335	Veff Maxi
Dielectric withstanding voltage	500	Veff mini
Insulation resistance	5000	M Ω mini

MECHANICAL CHARACTERISTICS

Center contact retention	
Axial force – Mating end	NA N mini
Axial force – Opposite end	NA N mini
Torque	NA N.cm mini

Recommended torque	
Mating	NA N.cm
Panel nut	NA N.cm
Clamp nut	NA N.cm
A/F clamp nut	0.0000 mm

Mating life	100 Cycles mini
Weight	0.7600 g

ENVIRONMENTAL

Operating temperature	-65/+165 °C
Hermetic seal	NA Atm.cm3/s
Panel leakage	NA

SPECIFICATION**CABLE ASSEMBLY**

Stripping	a	b	c	d	e	f
mm	1.30	0.00	0.00	0.00	0.00	0.00

Assembly instruction :

Recommended cable(s)

RG 405

KS 1

Characteristics indicated on this data sheet are those that can be achieved with the highest performance cable. Intrinsic limitations of the cable may diminish the performance of the assembly

Cable retention

- pull off	200 N mini
- torque	NA N.cm

TOOLING

Part Number	Description	Hexagon
R282051000	STRIPPING TOOL	
R282062010	POINTER GAUGE	
R282740030	SOLDERING MOUNTING	
R282743100	POSITIONER FOR SOLDERING SMP	
R282744254	POSITIONER FOR SOLDERING SMP	
R282862120	SOLDER GAUGE THCK 1.83	

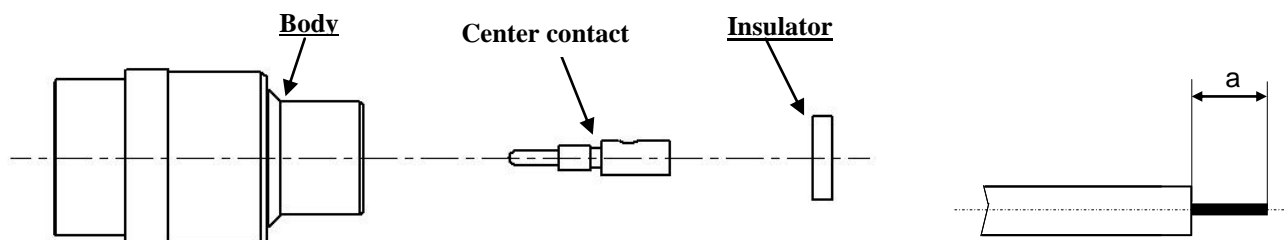
OTHER CHARACTERISTICS

RF leak. -80dB DC-3 GHz
-65dB 3-26.5 GHz

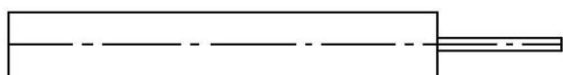
Issue : 1232 A

In the effort to improve our products, we reserve the right to make changes judged to be necessary.

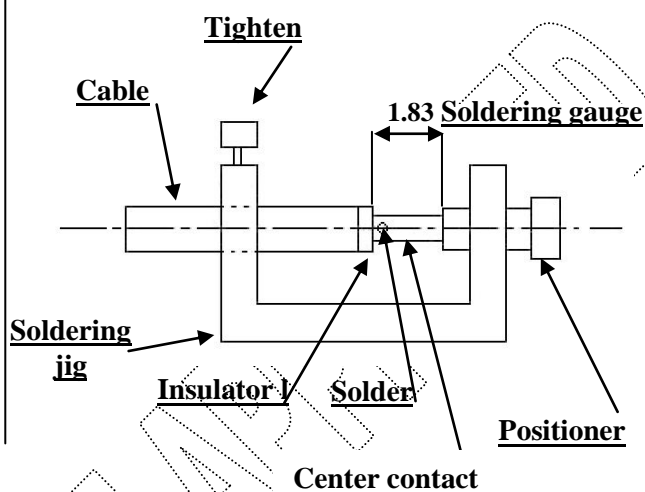


TWO HOLE FLANGE CONNECTOR MALE**FULL DETENT SOLDER TYPE CAB .086****R201.223.100**Series : **SMPM****COMPONENTS****STRIPPING CABLES****We recommend a thermal preconditionning cable****1**

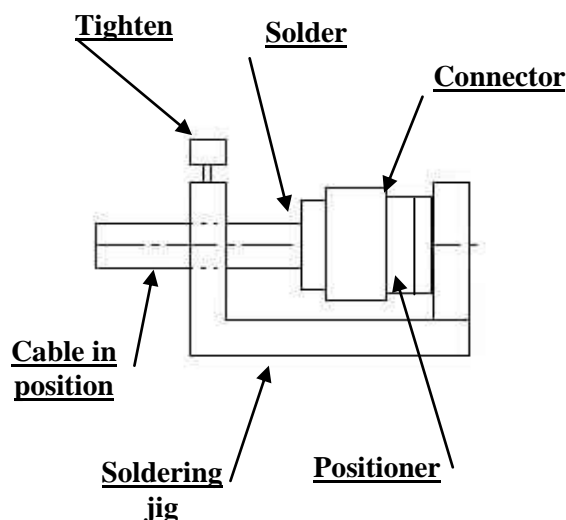
Strip the dielectric of the cable .
Clean the cable .
Soldering 180°C
Temperature stoking do not exceed 250°C

**2**

Screw the positioner onto the soldering jig.
Slide the center contact onto the cable inner conductor against insulator.
Fit the cable assembly onto the soldering jig.
Insert the soldering gauge
Tighten.
Take off the soldering gauge.
and solder the contact.

**3**

After cooling remove cable assembly from the jig.
Insert cable+centre contact in the connector.
Slide the positioner in the connector interface.
Slide cable into the connector body until it bottoms against.
Slide positioner into the assembly.
Tighten.
Solder the body onto the cable.
After cooling remove cable assembly from the jig.

**Issue : 1232 A**

In the effort to improve our products, we reserve the right to make changes judged to be necessary.

RADIAL