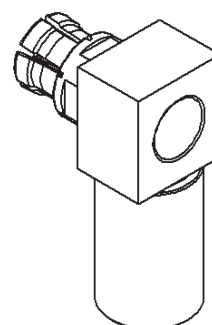
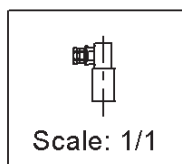
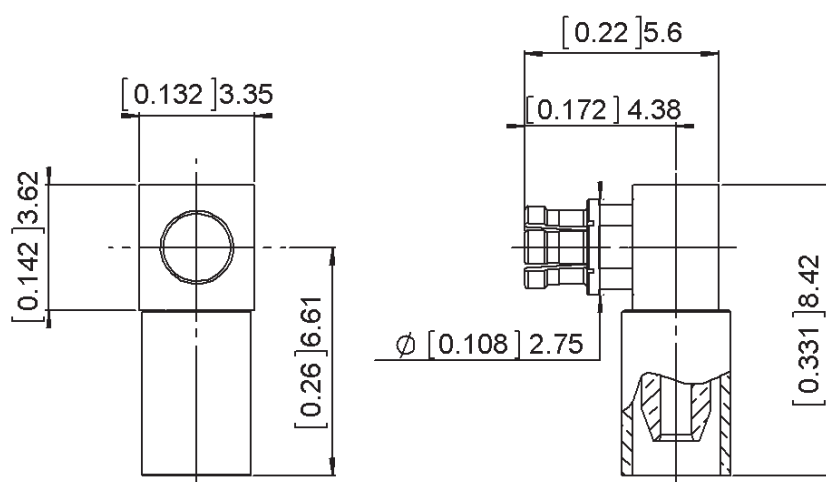
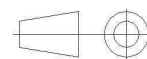


RIGHT ANGLE PLUG CRIMP TYPE**CABLE 2/50S****R201.170.110**

Series : SMPM



All dimensions are in mm.



COMPONENTS	MATERIALS	PLATING (μm)
BODY	BERYLLIUM COPPER	GOLD 1.3 OVER NICKEL 2
CENTER CONTACT	BERYLLIUM COPPER	GOLD 1.3 OVER NICKEL 2
OUTER CONTACT		
INSULATOR	PEEK	
GASKET		
OTHERS PARTS		
-	-	-
-	-	-

Issue : 1141 B

In the effort to improve our products, we reserve the right to make changes judged to be necessary.

RADIAL 

RIGHT ANGLE PLUG CRIMP TYPE

R201.170.110

CABLE 2/50S

Series : SMPM

PACKAGING

Standard	Unit	Other
100	'W' option	Contact us

SPECIFICATION**ELECTRICAL CHARACTERISTICS**

Impedance	50 Ω
Frequency	0-6 GHz
VSWR	1.25 + 0.0000 x F(GHz) Maxi
Insertion loss	0.12 √F(GHz) dB Maxi
RF leakage	- (NA - F(GHz)) dB Maxi
Voltage rating	250 Veff Maxi
Dielectric withstanding voltage	750 Veff mini
Insulation resistance	5000 MΩ mini

CABLE ASSEMBLY

Stripping	a	b	c	d	e	f
mm	1.50	3.60	6.20	0.00	4.70	0.00

Assembly instruction : **Crimp 05**

Recommended cable(s)

RG 196

RG 178

KX 21

RG 178 LC

Characteristics indicated on this data sheet are those that can be achieved with the highest performance cable. Intrinsic limitations of the cable may diminish the performance of the assembly

Cable retention

- pull off	30 N mini
- torque	NA N.cm

MECHANICAL CHARACTERISTICS

Center contact retention	
Axial force – Mating end	6.7 N mini
Axial force – Opposite end	6.7 N mini
Torque	NA N.cm mini

Recommended torque	
Mating	NA N.cm
Panel nut	NA N.cm
Clamp nut	NA N.cm
A/F clamp nut	0.0000 mm

Mating life	500 Cycles mini
Weight	0.4500 g

TOOLING

Part Number	Description	Hexagon
R282211000	CRIMPING TOOL	
R282235003	CRIMPING DIES M22520/5-03	
R282293000	CRIMPING TOOL M22520/5-01	

ENVIRONMENTAL

Operating temperature	-55/+165 ° C
Hermetic seal	NA Atm.cm3/s
Panel leakage	NA

OTHER CHARACTERISTICS

Issue : 1141 B

In the effort to improve our products, we reserve the right to make changes judged to be necessary.

