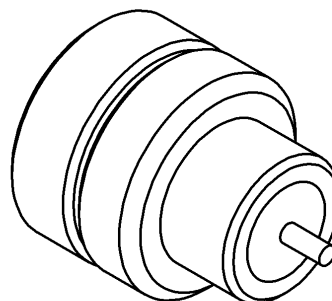
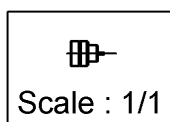
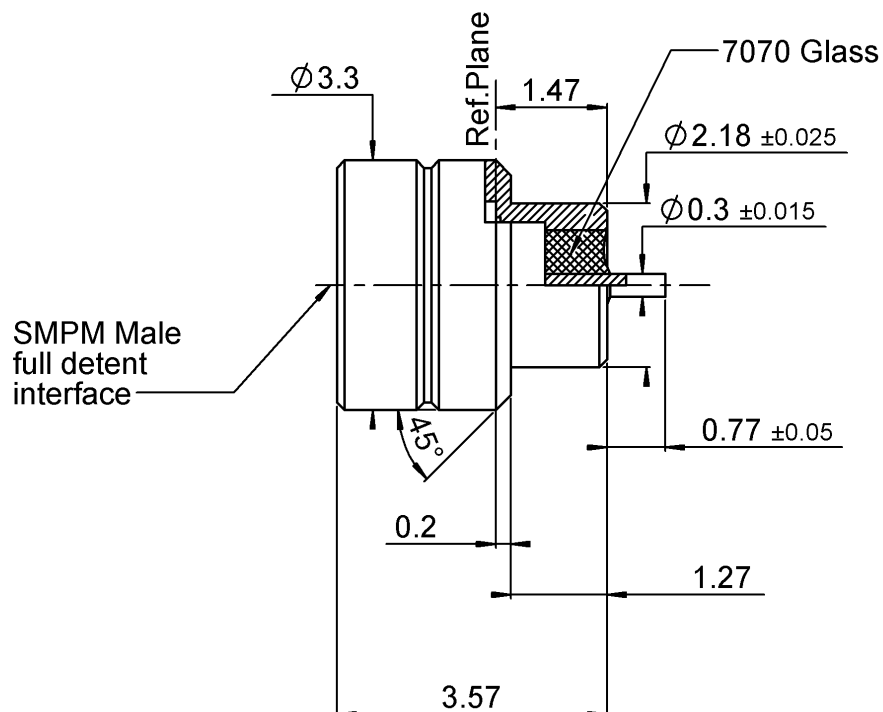


PAGE 1/3

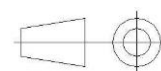
ISSUE 23-10-18A

SERIES SMPM

PART NUMBER R201645040



All dimensions are in mm. Tolerances according ISO 2768 m-H



COMPONENTS	MATERIALS	PLATING (μm)
Body	DILVER P1	GOLD 1.27 OVER NICKEL 2
Center contact	DILVER P1	GOLD 1.27 OVER NICKEL 2
Outer contact		
Insulator	GLASS	
Gasket		
Others parts		
-	-	-
-	-	-

PAGE 2/3

ISSUE **23-10-18A**

SERIES **SMPM**

PART NUMBER **R201645040**

PACKAGING

Standard	Unit	Other
100	Contact us	Contact us

ELECTRICAL CHARACTERISTICS

Impedance	50	Ω
Frequency	0-40	GHz
VSWR	*1.35 + 0,0000	x F(GHz) Maxi
Insertion loss	0.12	\sqrt{F} (GHz) dB Maxi
RF leakage	NA	- F(GHz) dB Maxi
Voltage rating	335	Veff Maxi
Dielectric withstanding voltage	500	Veff mini
Insulation resistance	5000	M Ω mini

ENVIRONMENTAL

Operating temperature	-65/+165	°C
Hermetic seal	10-8	Atm.cm3/s
Panel leakage	NA	

MECHANICAL CHARACTERISTICS

Center contact retention		
Axial force – Mating End	6.7	N mini
Axial force – Opposite end	6.7	N mini
Torque	NA	N.cm mini

SPECIFICATION

OTHER CHARACTERISTICS

Recommended torque		
Mating	NA	N.cm
Panel nut	NA	N.cm

Mating life	100	Cycles mini
Weight	0,1000	g

Assembly instruction:

Others:
***1.15 at 18 GHz**

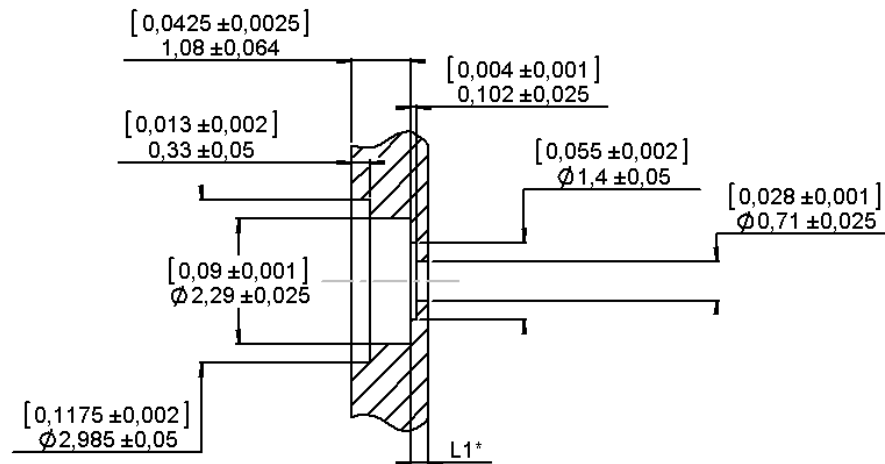
PAGE 3/3

ISSUE 23-10-18A

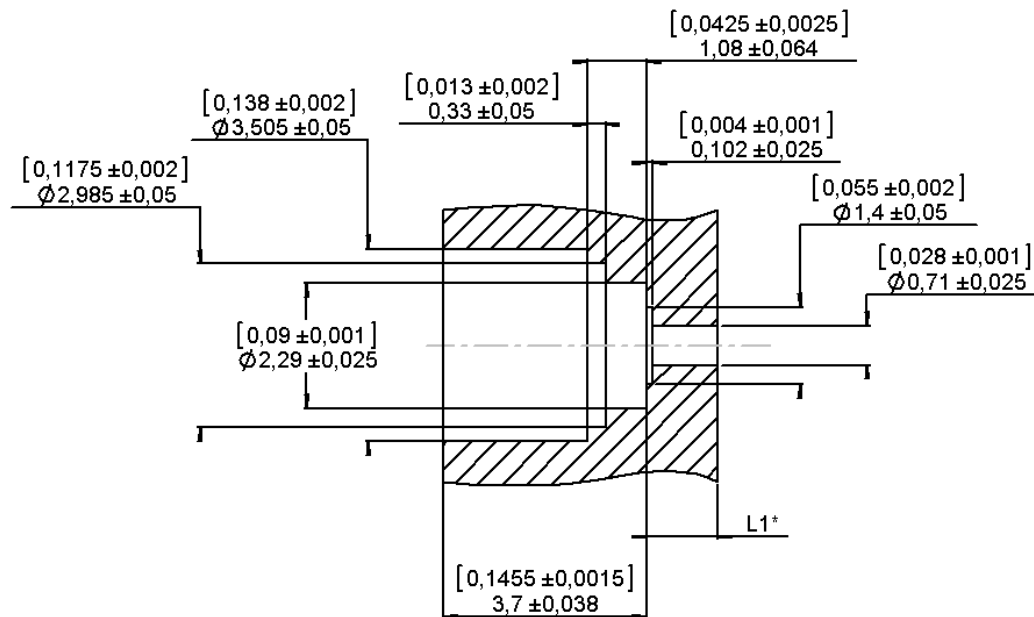
SERIES SMPM

PART NUMBER R201645040

PROTRUDING SHROUD MOUNTING HOLE



FLUSH SHROUD MOUNTING HOLE



*L1 dimension have to be determined according to each application