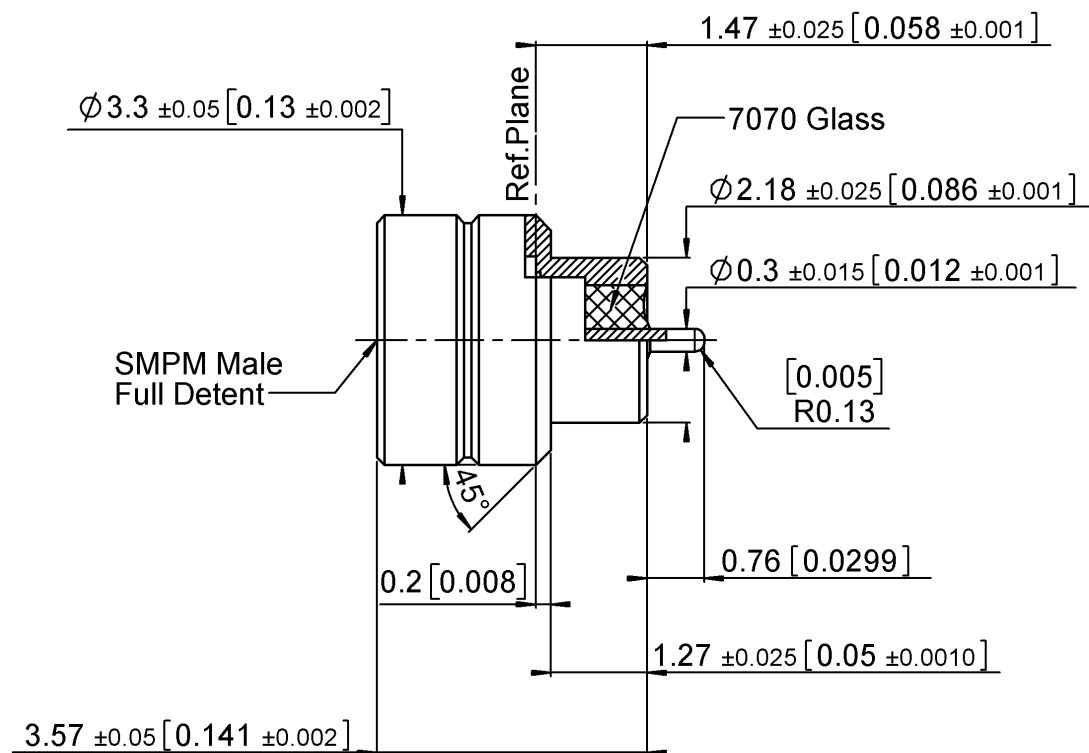


PAGE 1/3

ISSUE 01/06/16A

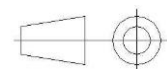
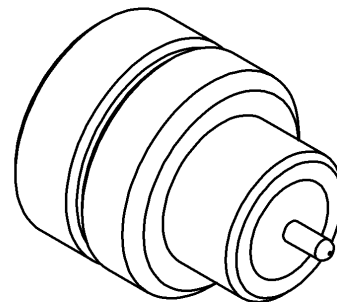
SERIES SMPM

PART NUMBER R201645030



Scale : 1/1

All dimensions are in mm.



COMPONENTS	MATERIALS	PLATING (μm)
Body	DILVER P1	GOLD OVER NICKEL
Center contact	DILVER P1	GOLD 0.5 OVER NICKEL 2
Outer contact		
Insulator	GLASS	
Gasket		
Others parts		
-	-	-
-	-	-

PAGE 2/3

ISSUE 01/06/16A

SERIES SMPM

PART NUMBER R201645030

PACKAGING

Standard	Unit	Other
100	Contact us	Contact us

ELECTRICAL CHARACTERISTICS

Impedance		50	Ω
Frequency		0-40	GHz
VSWR	*1.35 +	0,000	x F(GHz) Maxi
Insertion loss		0.12	√F(GHz) dB Maxi
RF leakage	- (NA	- F(GHz) dB Maxi
Voltage rating		335	Veff Maxi
Dielectric withstanding voltage		500	Veff mini
Insulation resistance		5000	MΩ mini

MECHANICAL CHARACTERISTICS

Center contact retention			
Axial force – Mating End		6.7	N mini
Axial force – Opposite end		6.7	N mini
Torque		NA	N.cm mini
Recommended torque			
Mating		NA	N.cm
Panel nut		NA	N.cm
Mating life		100	Cycles mini
Weight		0,100	g

ENVIRONMENTAL

Operating temperature	-65/+165	°C
Hermetic seal	10-8	Atm.cm3/s
Panel leakage	NA	

SPECIFICATION

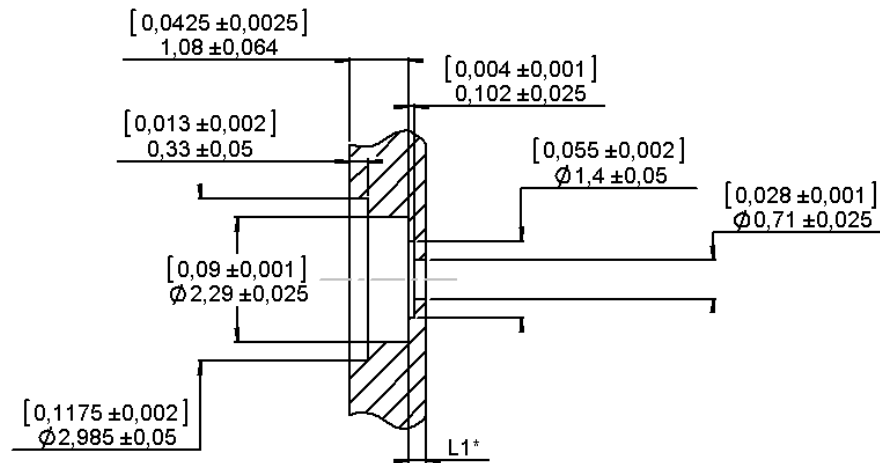
OTHER CHARACTERISTICS

Assembly instruction:

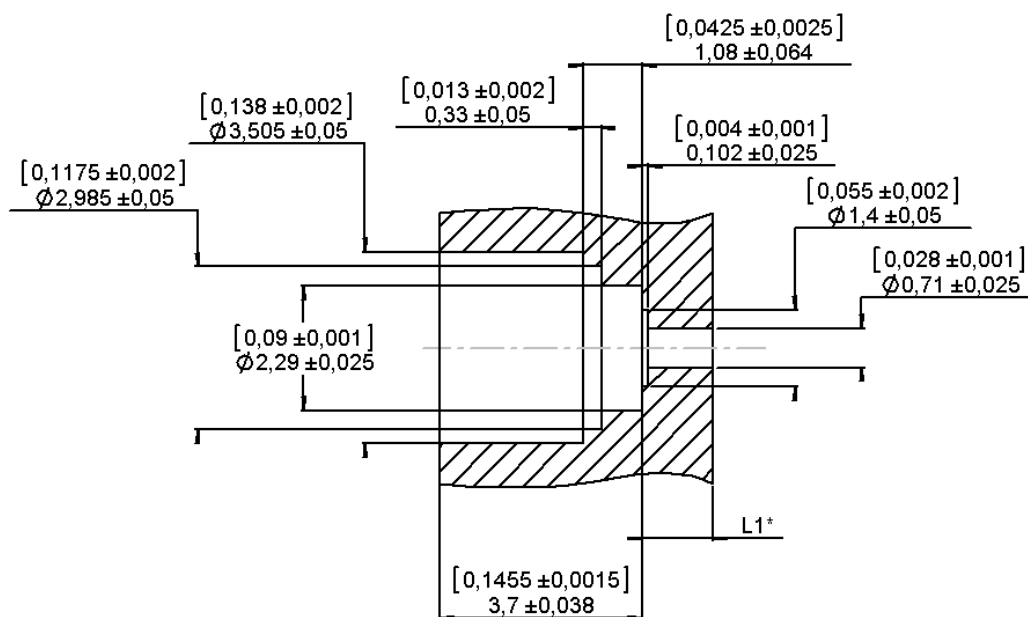
Others:

*V.S.W.R 1.15 at 18GHz

PROTRUDING SHROUD MOUNTING HOLE



FLUSH SHROUD MOUNTING HOLE



*L1 dimension have to be determined according to each application