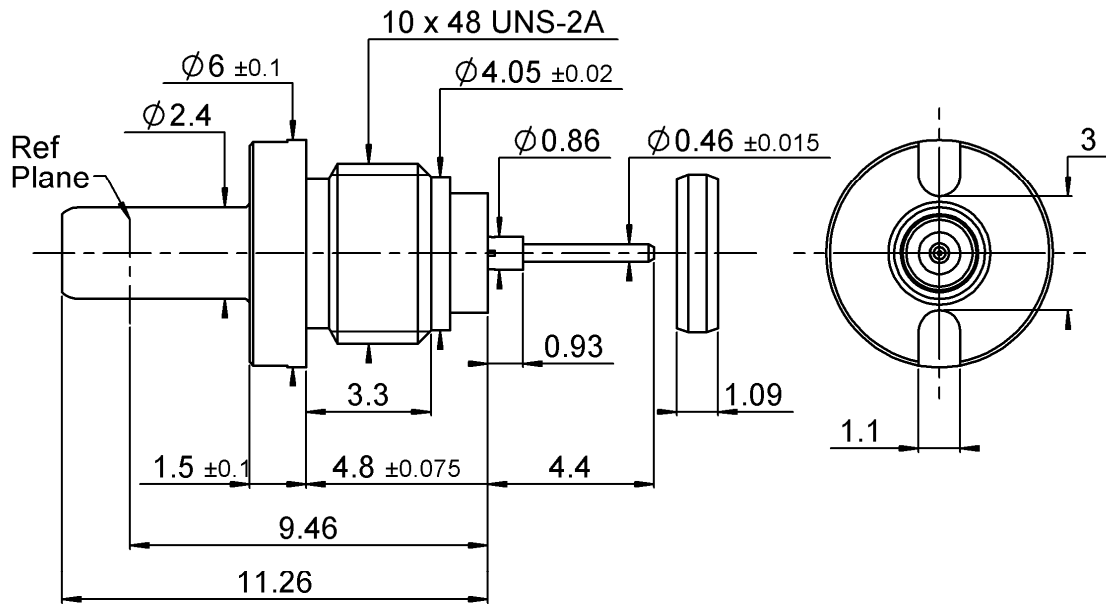


SCREW-ON MALE RECEPTACLE
HERMETIC - WITH AUXILIARY CONTACT

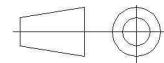
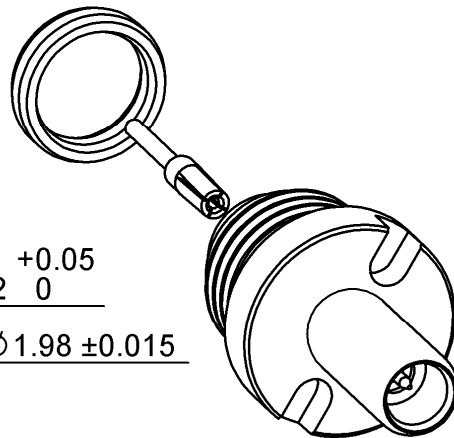
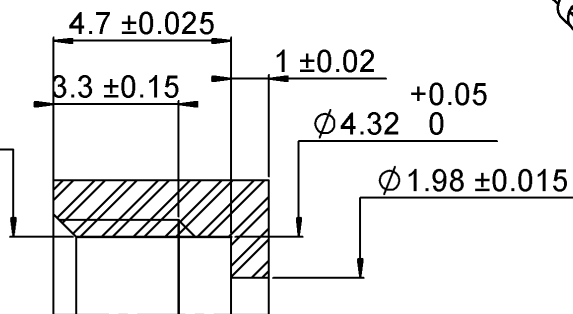
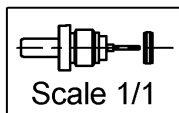
R199.012.514

Series : MCC #12



Panel drilling
Usinage panneau

10 x 48 UNS-2B
remachining
at $\phi 4.32 \pm 0.05/-0$



All dimensions are in mm.

COMPONENTS	MATERIALS	PLATING (μm)
BODY	STAINLESS STEEL	PASSIVATED.
CENTER CONTACT	BERYLLIUM COPPER	GOLD 1.3 OVER NICKEL 2
OUTER CONTACT	-	-
INSULATOR	PTFE+GLASS BEAD	-
GASKET	A-G4MC	GOLD 0.5 OVER NICKEL 2
OTHERS PARTS	DILVER P1	-
-	-	-
-	-	-

Issue : 1324 A

In the effort to improve our products, we reserve the right to make changes judged to be necessary.

RADIAL

SCREW-ON MALE RECEPTACLE
HERMETIC - WITH AUXILIARY CONTACT

R199.012.514

Series : MCC #12

PACKAGING

Standard	Unit	Other
100	-	Contact us

SPECIFICATION**ELECTRICAL CHARACTERISTICS**

Impedance	50	Ω
Frequency	0-18	GHz
VSWR	1.1 + 0,0100	x F(GHz) Maxi
Insertion loss	0.1	$\sqrt{F}(\text{GHz})$ dB Maxi
RF leakage	- (*80)	- F(GHz)) dB Maxi
Voltage rating	335	Veff Maxi
Dielectric withstanding voltage	1000	Veff mini
Insulation resistance	5000	M Ω mini

ENVIRONMENTAL

Operating temperature	-65/+165	$^{\circ}\text{C}$
Hermetic seal	10-8	Atm.cm3/s
Panel leakage	NA	

OTHER CHARACTERISTICS

Assembly instruction

Others :

*DC-3 GHz

3 GHz to 18 GHz : -65 dB

MECHANICAL CHARACTERISTICS

Center contact retention	
Axial force – Mating end	6.7 N mini
Axial force – Opposite end	6.7 N mini
Torque	NA N.cm mini
Recommended torque	
Mating	NA N.cm
Panel nut	110 N.cm
Mating life	500 Cycles mini
Weight	0,9400 g

Issue : 1324 A

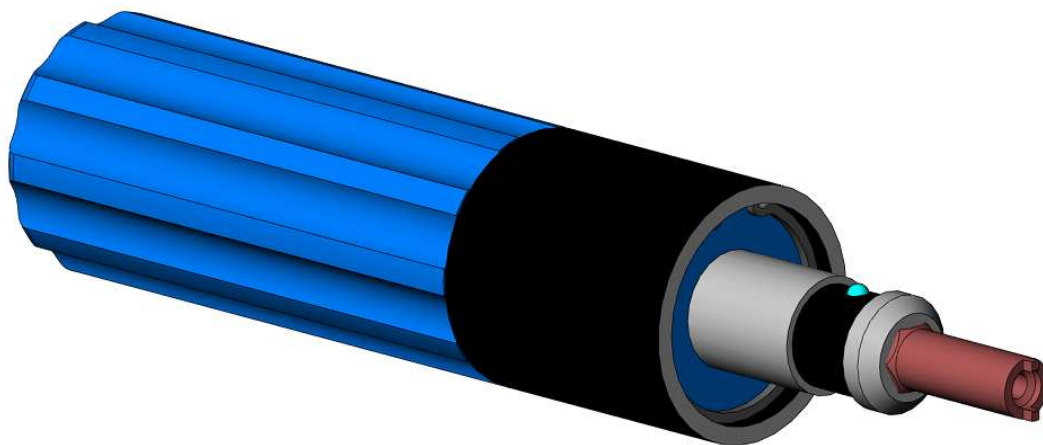
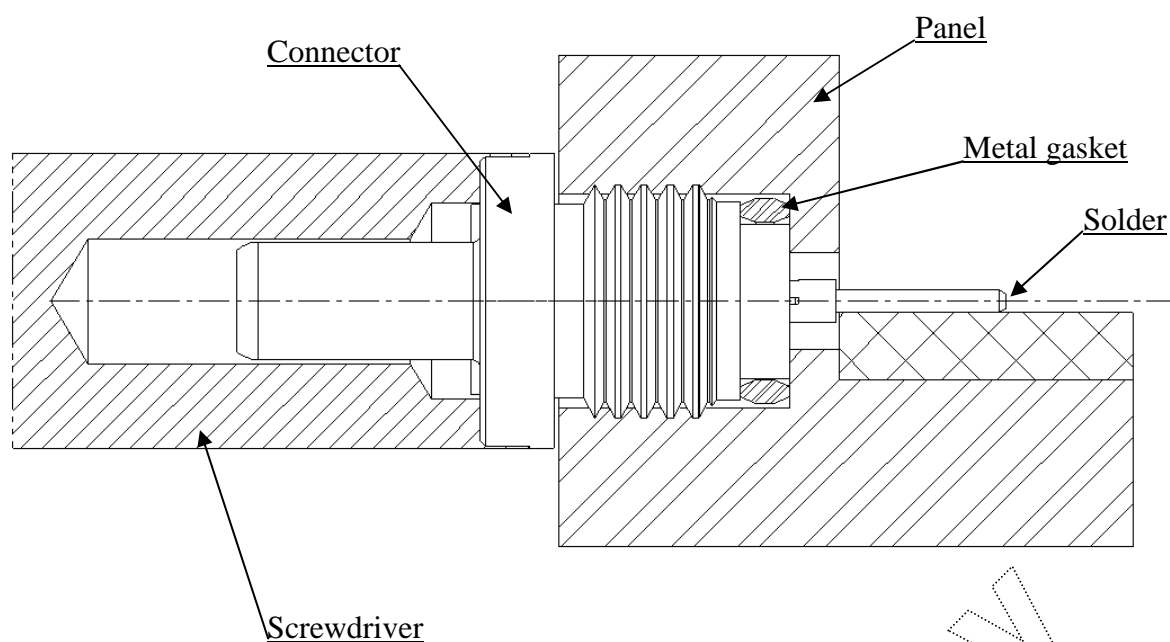
In the effort to improve our products, we reserve the right to make changes judged to be necessary.

RADIAL 

SCREW-ON MALE RECEPTACLE
HERMETIC - WITH AUXILIARY CONTACT

R199.012.514

Series : MCC #12

TOOLING R282.343.010**INSTALLATION**

Assemble metal gasket onto the connector. Screw the connector into the housing. Using the torque wrench R282.343.010 and tighten the connector up to 110 Ncm \pm 10 Ncm with to guaranty hermeticity 10-8cc/sec. Then solder the pin on the track. Beware there is not too much solder.

Issue : 1324 A

In the effort to improve our products, we reserve the right to make changes judged to be necessary.

RADIAL 