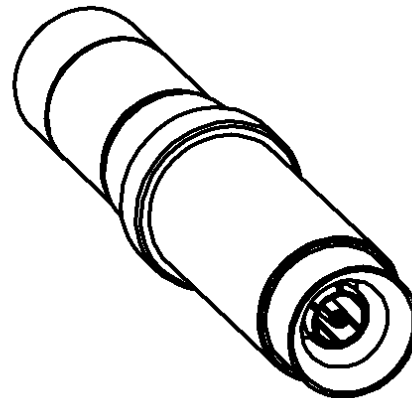
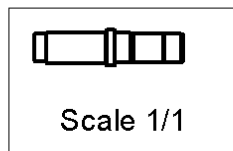
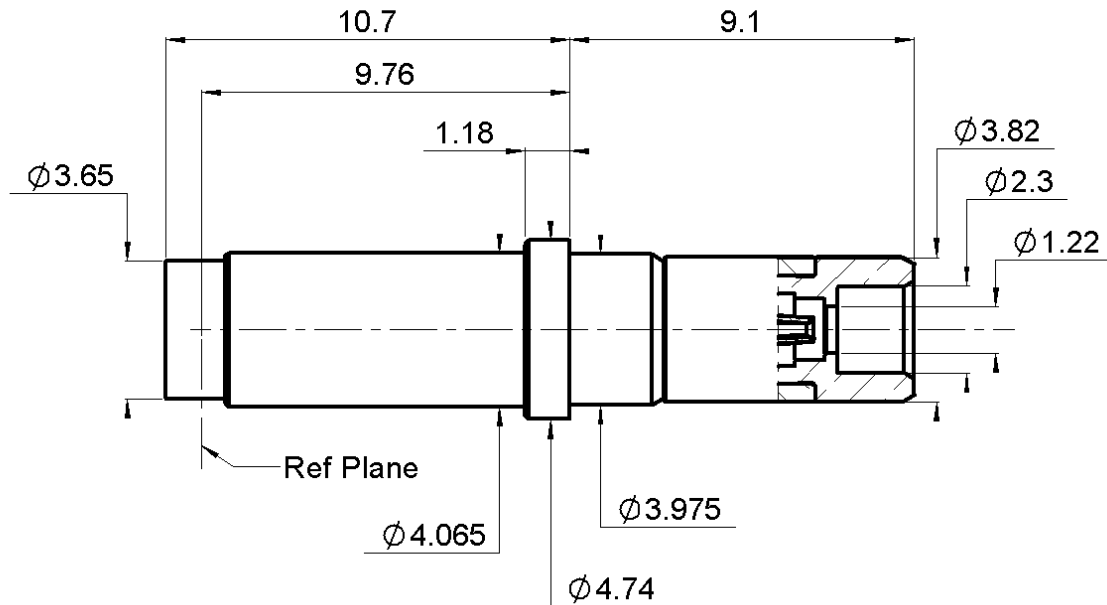


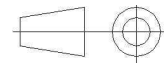
STRAIGHT FLOATING PLUG SOLDER TYPE
FOR CABLE .085 - NSX-MPX SERIES

R199.012.293

Series : MCC #12



All dimensions are in mm.



COMPONENTS	MATERIALS	PLATING (μm)
BODY	BERYLLIUM COPPER	GOLD 1.3 OVER NICKEL 2
CENTER CONTACT	BERYLLIUM COPPER	GOLD 1.3 OVER NICKEL 2
OUTER CONTACT	-	-
INSULATOR	PTFE+PEEK	-
GASKET	-	-
OTHERS PARTS	BRONZE	GOLD 0.5 OVER NICKEL 2
SPRING	STAINLESS STEEL	-
-	-	-

Issue : 4042 A

In the effort to improve our products, we reserve the right to make changes judged to be necessary.

RADIAL

STRAIGHT FLOATING PLUG SOLDER TYPE**FOR CABLE .085 - NSX-MPX SERIES****R199.012.293**

Series : MCC #12

PACKAGING

Standard	Unit	Other
100	'W' option	Contact us

ELECTRICAL CHARACTERISTICS

Impedance	50	Ω
Frequency	0-40	GHz
VSWR	* + 0,0000	x F(GHz) Maxi
Insertion loss	0.12	$\sqrt{F}(\text{GHz})$ dB Maxi
RF leakage	- (**	- F(GHz)) dB Maxi
Voltage rating	335	Veff Maxi
Dielectric withstanding voltage	500	Veff mini
Insulation resistance	5000	M Ω mini

MECHANICAL CHARACTERISTICS

Center contact retention	
Axial force – Mating end	7 N mini
Axial force – Opposite end	7 N mini
Torque	NA N.cm mini

Recommended torque	
Mating	NA N.cm
Panel nut	NA N.cm
Clamp nut	NA N.cm
A/F clamp nut	0,0000 mm

Mating life	500 Cycles mini
Weight	1,2900 g

ENVIRONMENTAL

Operating temperature	-65/+165 °C
Hermetic seal	NA Atm.cm3/s
Panel leakage	NA

SPECIFICATION**CABLE ASSEMBLY**

Stripping	a	b	c	d	e	f
mm	1,80	0,00	0,00	0,00	0,00	0,00

Assembly instruction :

Recommended cable(s)

RG 405

.086

Characteristics indicated on this data sheet are those that can be achieved with the highest performance cable. Intrinsic limitations of the cable may diminish the performance of the assembly

Cable retention

- pull off	40N N mini
- torque	NA N.cm

TOOLING**See Page 3**

Part Number	Description	Hexagon
.	.	.

OTHER CHARACTERISTICS

*1.15 (DC-26 GHz) 1.25 (26GHz-40GHz)

**-80dB (DC-3 GHz) -65dB (3 GHz-26GHz)

Issue : 4042 A

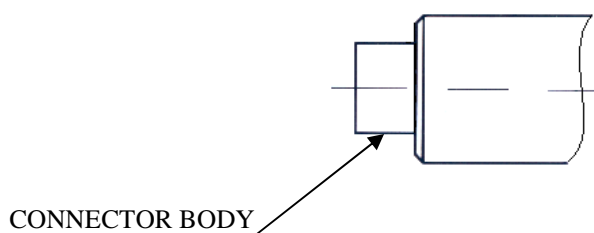
In the effort to improve our products, we reserve the right to make changes judged to be necessary.



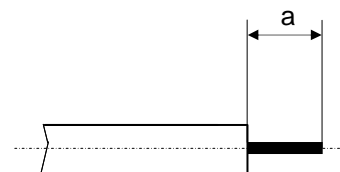
STRAIGHT FLOATING PLUG SOLDER TYPE
FOR CABLE .085 - NSX-MPX SERIES

R199.012.293

Series : MCC #12

COMPONENT**STRIPPING DIMENSION**

CONNECTOR BODY

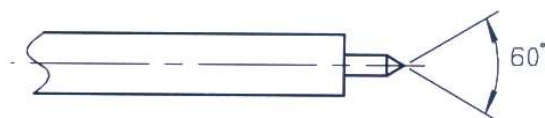


We recommend a thermal preconditioning of the cable.

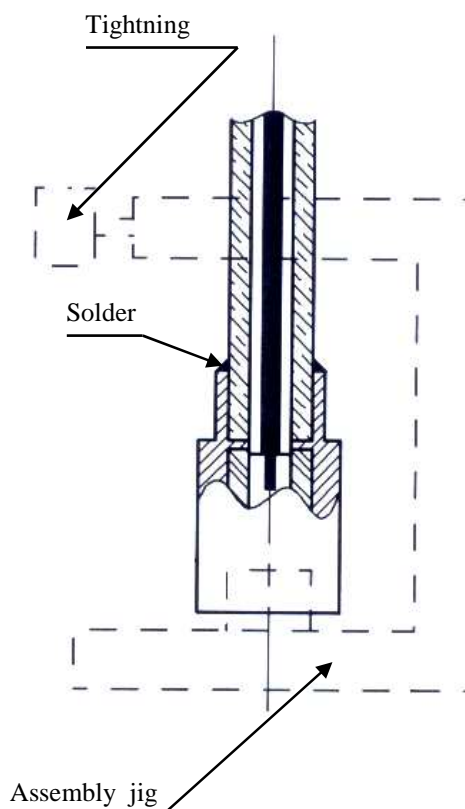
1

Strip the cable.

Trim cable center conductor.

**2**

Slide cable into connector body until it contacts the body shoulder.
 Place sub assembly into the assembly jig : R282.740.000 (or equivalent)
 Solder body onto cable.
 Let the assembly cool down before removing it from the jig.
 Clean the solder area.

**Issue : 4042 A**

In the effort to improve our products, we reserve the right to make changes judged to be necessary.

RADIAL 