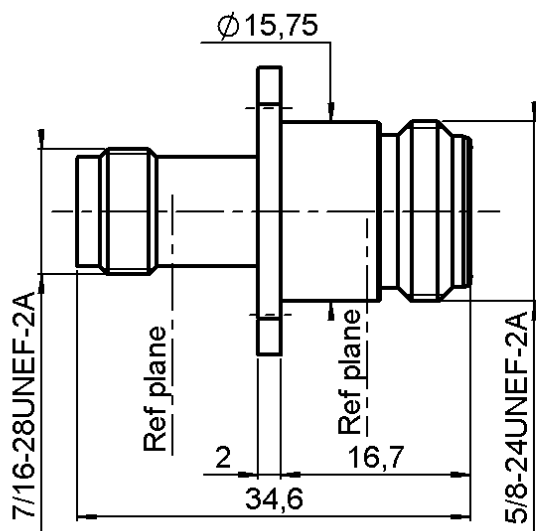
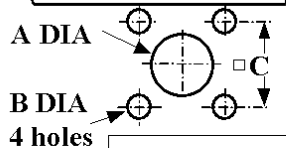


## FEMALE TNC - FEMALE N STRAIGHT ADAPTER

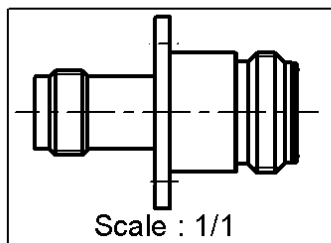
## SQUARE FLANGE ADAPTER

**R191.514.020**

Série : ADAPT

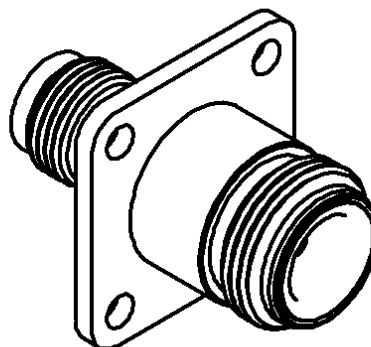

**PANEL CUT OUT**


	mm	
	Maxi	mini
A	16.3	16.1
B	3.3	3.2
C	18.35	18.15



Scale : 1/1

All dimensions are in mm.



COMPONENTS	MATERIALS	PLATINGS ( $\mu\text{m}$ )
BODY	BRASS	NICKEL 2
CENTER CONTACT	BERYLLIUM COPPER	GOLD 0.5 OVER NICKEL 2
OUTER CONTACT	BRASS	NICKEL 2
INSULATOR	PTFE	
GASKET		
OTHERS PARTS		
-	-	-
-	-	-

Issue : 0245 A

In the effort to improve our products, we reserve the rights to make changes judged to be necessary.



**FEMALE TNC - FEMALE N STRAIGHT ADAPTER****SQUARE FLANGE ADAPTER****R191.514.020**

Série : ADAPT

**PACKAGING**

Standard	Unit	Other
<b>1</b>		<b>Contact us</b>

**SPECIFICATION****ABS1332-01****ELECTRICAL CHARACTERISTICS**

Impedance		<b>50</b> $\Omega$
Frequency		<b>0-11</b> GHz
VSWR	<b>1.45</b> +	<b>0.000</b> x F(GHz) Maxi
Insertion loss		<b>0.14</b> $\sqrt{F(\text{GHz})}$ dB Maxi
RF leakage	- (	- F(GHz)) dB Maxi
Voltage rating		<b>500</b> Veff Maxi
Dielectric withstanding voltage		<b>1500</b> Veff mini
Insulation resistance		<b>5000</b> M $\Omega$ mini

**ENVIRONMENTAL**

Operating	<b>-55/+155</b> °C
Hermetic seal	<b>NA</b> Atm.cm3/s
Panel leakage	<b>NA</b>

**MECHANICAL CHARACTERISTICS**

Center contact retention		
Axial force – Mating end	<b>27</b>	N mini
Axial force – Opposite end	<b>27</b>	N mini
Torque	<b>NA</b>	N.cm mini

## Recommended torque

Mating	<b>TNC</b>	<b>0</b> N.cm
	<b>N</b>	<b>0</b> N.cm
		<b>0</b> N.cm
Panel nut	<b>NA</b>	N.cm

Mating life	<b>500</b>	Cycles mini
Weight	<b>32.000</b>	g

**OTHERS CHARACTERISTICS**

Issue : 0245 A

In the effort to improve our products, we reserve the rights to make changes judged to be necessary.

**RADIALL**

®