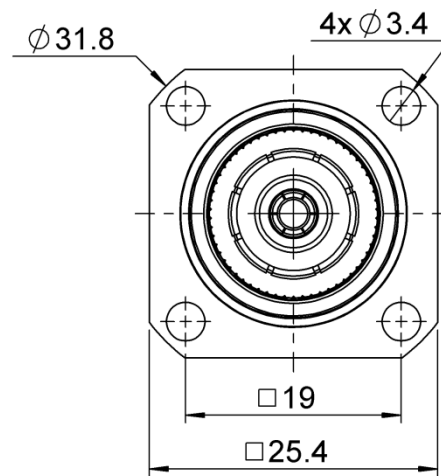
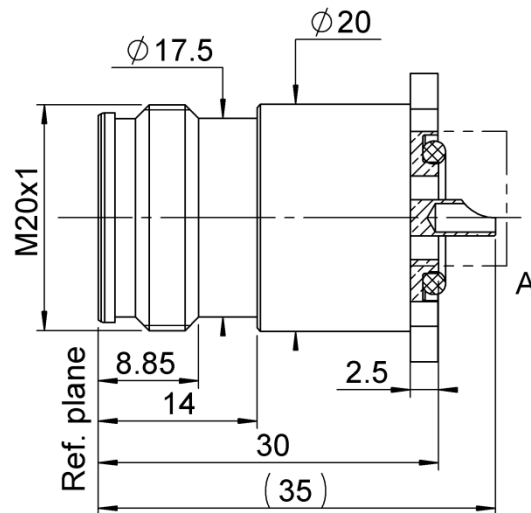


PAGE 1/2

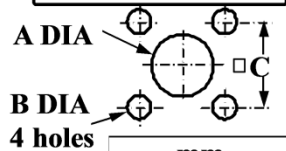
ISSUE 04-01-16A

SERIES 4.3-10

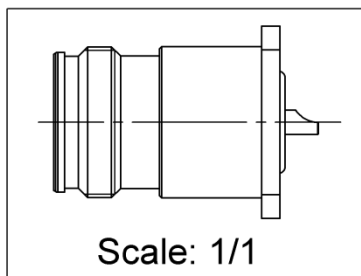
PART NUMBER **R183405067**



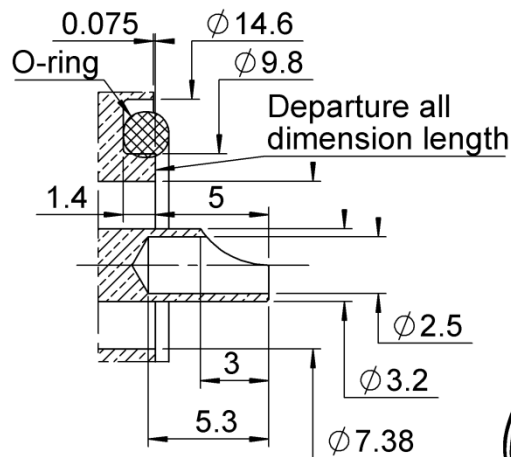
PANEL CUT OUT



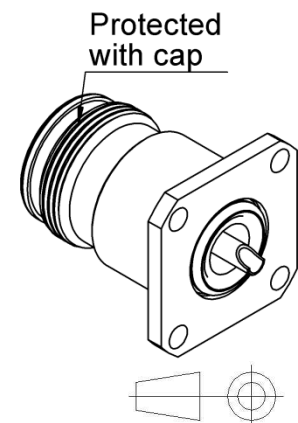
mm		
	Maxi	mini
A	7.46	7.3
B	3.6	3.5
C	19.05	18.95



All dimensions are in mm.



DETAIL A
SCALE 3 : 1



COMPONENTS	MATERIALS	PLATING (μm)
Body	BRASS.	BBR
Center contact	BRONZE, BRASS	SILVER
Outer contact	BRONZE	SILVER
Insulator	PTFE	
Gasket	SILICONE RUBBER	
Others parts		
-	-	-
-	-	-

PAGE 2/2	ISSUE 04-01-16A	SERIES 4.3-10	PART NUMBER R183405067
----------	------------------------	----------------------	-------------------------------

PACKAGING

Standard	Unit	Other
25	Contact us	Contact us

ELECTRICAL CHARACTERISTICS

Impedance		50	Ω
Frequency		0-6	GHz
VSWR	1.02* +	0.0100	x F(GHz) Maxi
Insertion loss		0.05*	√F(GHz) dB Maxi
RF leakage	- (**	- F(GHz) dB Maxi
Voltage rating		1000	Veff Maxi
Dielectric withstanding voltage		2500	Veff mini
Insulation resistance		5000	MΩ mini

MECHANICAL CHARACTERISTICS

Center contact retention			
Axial force – Mating End		30	N mini
Axial force – Opposite end		30	N mini
Torque		5	N.cm mini
Recommended torque			
Mating		NA	N.cm
Panel nut		NA	N.cm
Mating life		100	Cycles mini
Weight		54.6700	g

ENVIRONMENTAL

Operating temperature	-55/+90	°C
Hermetic seal	NA	Atm.cm3/s
Panel leakage	IP67	

SPECIFICATION

OTHER CHARACTERISTICS

Assembly instruction:**NA**

Others:

***Coaxial Transmission Line Only.**

**** RF leakage typical >=110dB @DC-3GHz**

PIM3<-123 dBm @ 2x20W