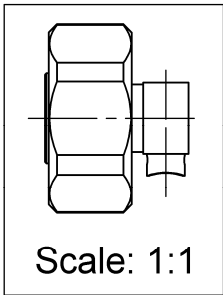
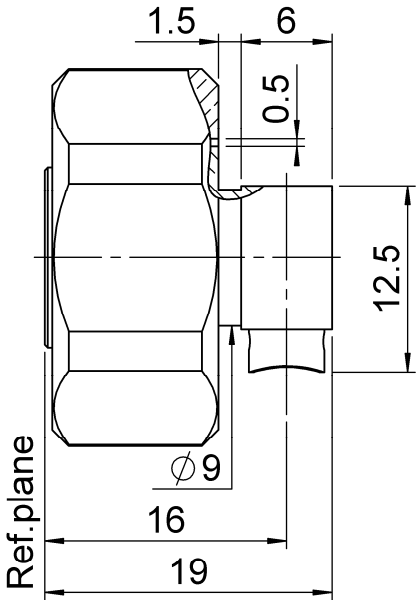
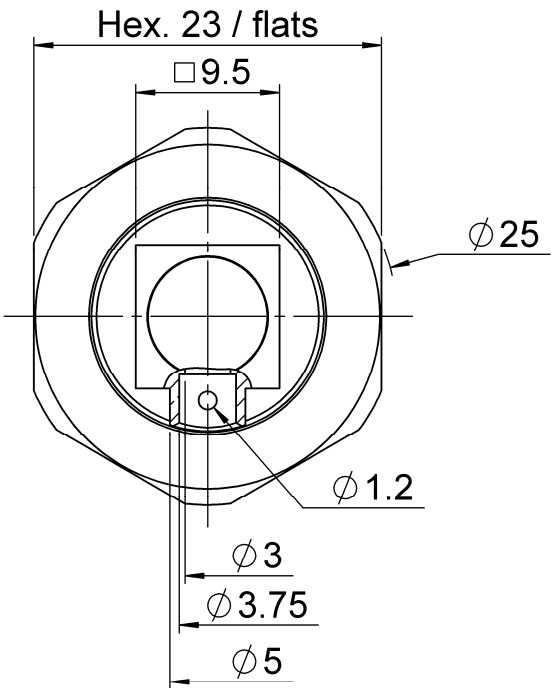
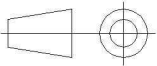
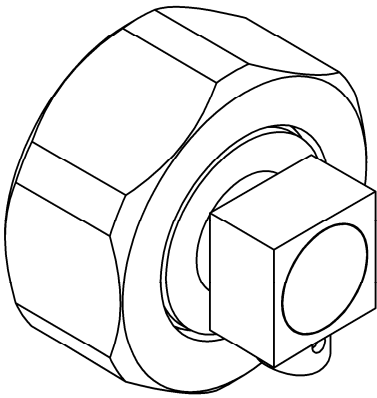


PAGE 1/3	ISSUE 1445A	SERIES 4.1-9.5	PART NUMBER R170152107
----------	-------------	----------------	------------------------



All dimensions are in mm.



COMPONENTS	MATERIALS	PLATING (μm)
Body	BRASS	BBR
Center contact	BRASS	SILVER OVER COPPER
Outer contact	PTFE	
Insulator	SILICONE RUBBER	
Gasket	BRASS	BBR
Others parts		
-		
-		

PAGE <b>2/3</b>	ISSUE <b>1445A</b>	SERIES <b>4.1-9.5</b>	PART NUMBER <b>R170152107</b>
-----------------	--------------------	-----------------------	-------------------------------

## PACKAGING

Standard	Unit	Other
<b>50</b>	<b>Contact us</b>	<b>Contact us</b>

## ELECTRICAL CHARACTERISTICS

Impedance	<b>50</b>	$\Omega$
Frequency	<b>0-6</b>	GHz
VSWR	<b>* + 0.0000</b>	x F(GHz) Maxi
Insertion loss	<b>0.05</b>	$\sqrt{F}$ (GHz) dB Maxi
RF leakage	<b>- ( NA</b>	- F(GHz)) dB Maxi
Voltage rating	<b>1400</b>	Veff Maxi
Dielectric withstanding voltage	<b>2500</b>	Veff mini
Insulation resistance	<b>5000</b>	M $\Omega$ mini

## MECHANICAL CHARACTERISTICS

Center contact retention		
Axial force – Mating End	<b>27</b>	N mini
Axial force – Opposite end	<b>27</b>	N mini
Torque	<b>NA</b>	N.cm mini
Recommended torque		
Mating	<b>1000</b>	N.cm
Panel nut	<b>NA</b>	N.cm
Clamp nut	<b>NA</b>	N.cm
A/F clamp nut	<b>0.0000</b>	mm
Mating life	<b>500</b>	Cycles mini
Weight	<b>30.1600</b>	g

## ENVIRONMENTAL

Operating temperature	<b>-55/+155</b>	°C
Hermetic seal	<b>NA</b>	Atm.cm3/s
Panel leakage	<b>NA</b>	

## SPECIFICATION

**14040953 V1.0**

## CABLE ASSEMBLY

Stripping	a	b	c	d	e	f
mm	<b>3</b>	<b>4.75</b>	<b>10</b>	<b>0</b>	<b>0</b>	<b>0</b>

Assembly instruction: **See Page 3**

Recommended cable(s)

**RG 402**  
**KS 2**  
**SUCOFORM 141**

Characteristics indicated on this data sheet are those that can be achieved with the highest performance cable. Intrinsic limitations of the cable may diminish the performance of the assembly

Cable retention

- pull off	<b>500</b>	N mini
- torque	<b>NA</b>	N.cm

## TOOLING

Part Number	Description	Hexagon
.	.	.

## OTHER CHARACTERISTICS

**\* VSWR:  $\leq 1.1$  at DC-3GHzz**  
 **$\leq 1.2$  at 3-6GHz**  
**PIM3:  $\leq 117$ dBm at 900MHz/1800MHz/2600MHz(2x20w)**

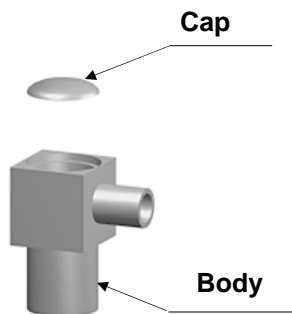
PAGE 3/3

ISSUE 1445A

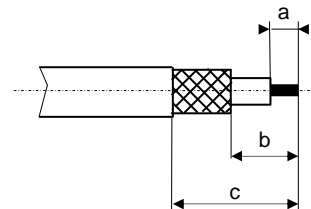
SERIES 4.1-9.5

PART NUMBER R170152107

## COMPONENTS



## STRIPPING DIMENSIONS



We recommend a cable thermal preconditioning before assembly

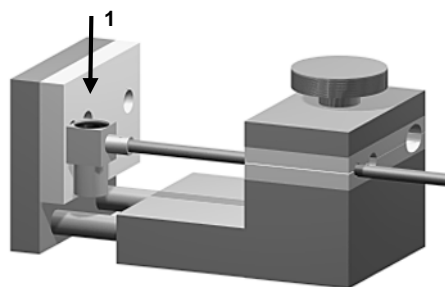
**1**

Strip the cable with the cable stripping tool.  
Clean the cable.



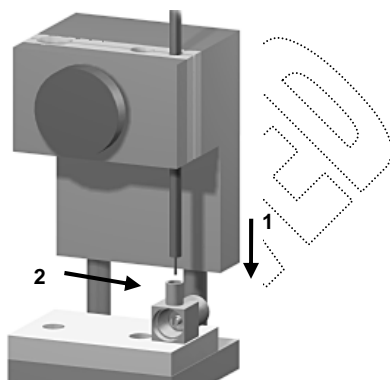
**3**

Solder the inner conductor.



**2**

Insert the cable into the connector until it bottoms against the body.  
Put three rings of solder around the cable and solder the body onto the cable.



**3**

Place the cap into the body.  
Press on the cap flush or slightly below the surface of the body assembly.

