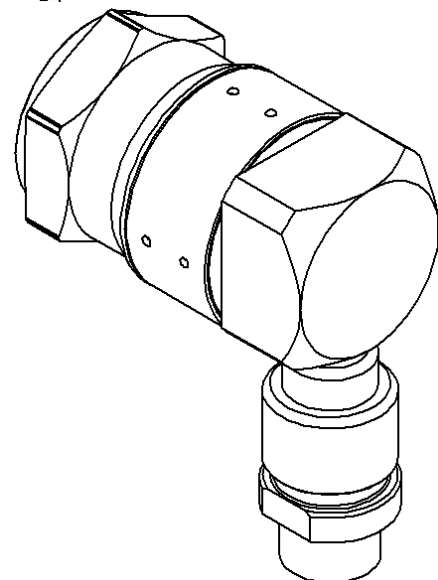
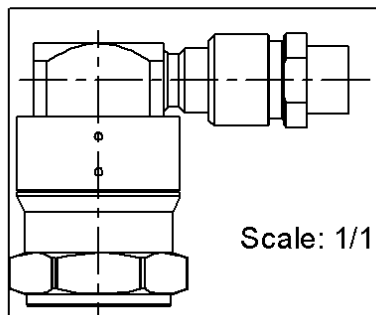
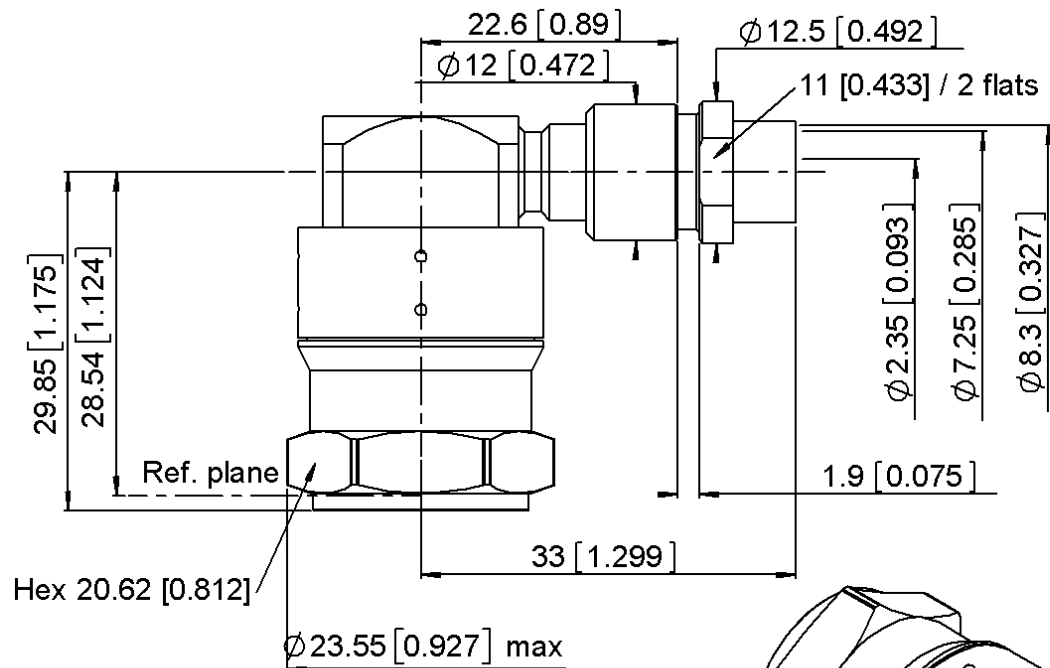


PAGE 1/3

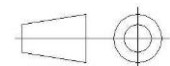
ISSUE 01-08-18A

SERIES N-18

PART NUMBER R163198L21



All dimensions are in mm. Tolerances according ISO 2768 m-H



COMPONENTS	MATERIALS	PLATING (µm)
Body	STAINLESS STEEL	PASSIVATED
Center contact	BERYLLIUM COPPER; BRASS	GOLD OVER NICKEL
Outer contact		
Insulator	FLUOROSILICONE	
Gasket	STAINLESS STEEL, BRASS	PASSIVATED, GOLD
Others parts		
-	-	-
-	-	-

PAGE **2/3**

ISSUE 01-08-18A

SERIES **N-18**

PART NUMBER **R163198L21**

PACKAGING

Standard	Unit	Other
1	Contact us	Contact us

ELECTRICAL CHARACTERISTICS

Impedance	50	Ω
Frequency	0-18	GHz
VSWR	1.15 + 0.0000	x F(GHz) Maxi
Insertion loss	0.1	\sqrt{F} (GHz) dB Maxi
RF leakage	90	- F(GHz)) dB Maxi
Voltage rating	500	Veff Maxi
Dielectric withstanding voltage	1500	Veff mini
Insulation resistance	5000	M Ω mini

MECHANICAL CHARACTERISTICS

Center contact retention		
Axial force – Mating End	27	N mini
Axial force – Opposite end	27	N mini
Torque	NA	N.cm mini
Recommended torque		
Mating	192	N.cm
Panel nut	NA	N.cm
Clamp nut	300	N.cm
A/F clamp nut	11.0000	mm
Mating life	250	Cycles mini
Weight	67.4700	g

ENVIRONMENTAL

Operating temperature	-65/+165	°C
Hermetic seal	NA	Atm.cm3/s
Panel leakage	IP67	

SPECIFICATION

CABLE ASSEMBLY

Stripping	a	b	c	d	e	f
mm	20	2.5	0	0	0	0

Assembly instruction:

Recommended cable(s)

SHF8
F1703-160

Characteristics indicated on this data sheet are those that can be achieved with the highest performance cable. Intrinsic limitations of the cable may diminish the performance of the assembly

Cable retention

- pull off	*	N mini
- torque	NA	N.cm

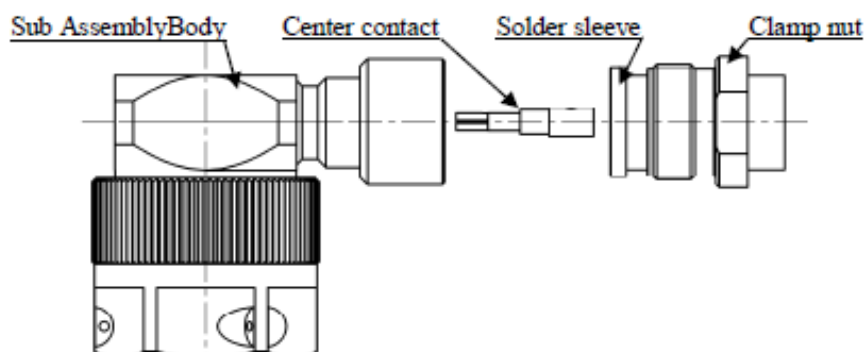
TOOLING

Part Number	Description	Hexagon
.	.	.

OTHER CHARACTERISTICS

***See the cable assembly TDS**

COMPONENTS

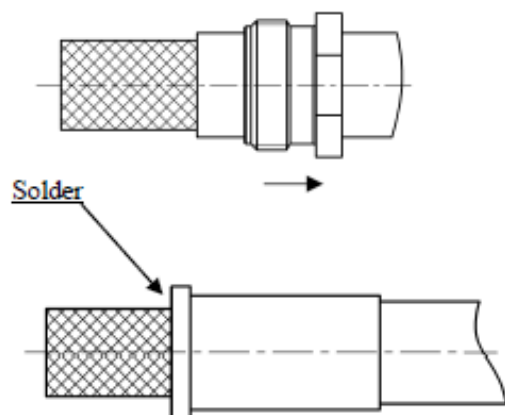


STRIPPING DIMENSIONS



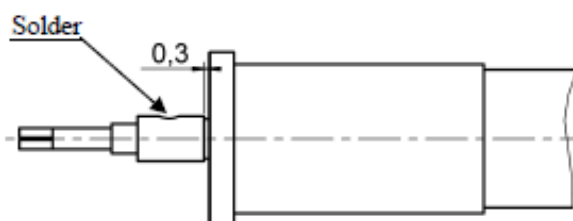
1

Strip the cable.
Slide the clamp nut onto the cable.
Solder the ferrule onto the braid of the cable.



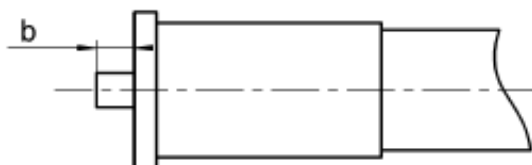
3

Slide the center contact onto the cable inserting between contact and ferrule the area gap.
Solder the contact onto the inner conductor.



2

Cut the excess of braid and dielectric leveled on the sleeve.



4

Mount the whole body into the main sub assembly and screw the solder sleeve.
(recommended coupling torque 300 N/cm)

