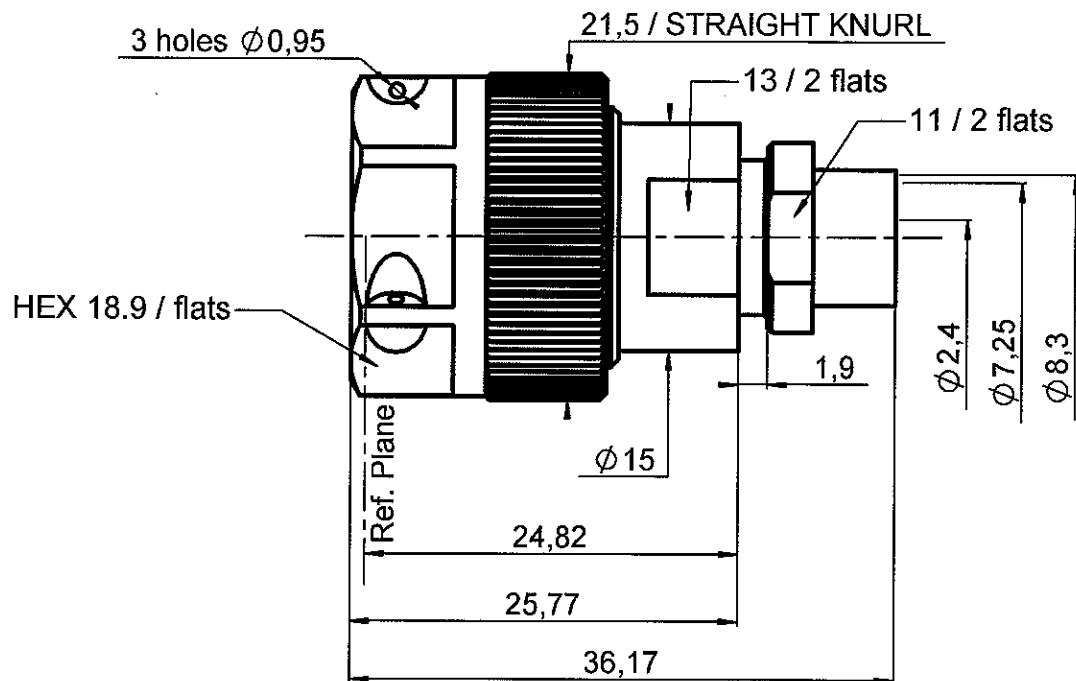


STRAIGHT PLUG SOLDER TYPE

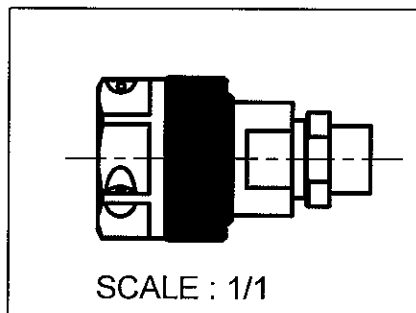
**R163.068.L01**

CABLE SHF 8+8M

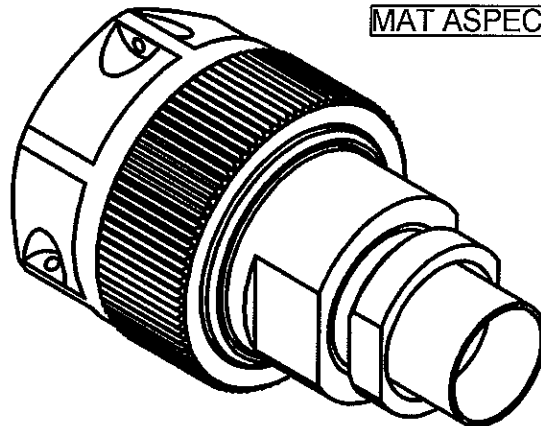
Series : N-18



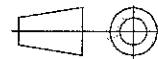
MAT ASPECT



SCALE : 1/1



All dimensions are in mm.



COMPONENTS	MATERIALS	PLATING ( $\mu\text{m}$ )
BODY	STAINLESS STEEL (316L)	PASSIVATED.
CENTER CONTACT	BRASS	GOLD 1.3 OVER NICKEL 2
OUTER CONTACT	-	-
INSULATOR	PTFE	-
GASKET	FLUOROSILICON	-
OTHERS PARTS	ST. STEEL (316L) , BRASS	GOLD , PASSIVATED
-	-	-
-	-	-

Issue : 0609 A

In the effort to improve our products, we reserve the right to make changes judged to be necessary.



**RADIALL**®

## STRAIGHT PLUG SOLDER TYPE

**R163.068.L01**

CABLE SHF 8+8M

Series : N-18

PACKAGING

Standard	Unit	Other
1	-	Contact us

SPECIFICATIONELECTRICAL CHARACTERISTICS

Impedance	50	$\Omega$
Frequency	0-18	GHz
VSWR	1.12 + 0,0000	x F(GHz) Maxi
Insertion loss	0.1	$\sqrt{F}$ (GHz) dB Maxi
RF leakage	-( 90	- F(GHz)) dB Maxi
Voltage rating	500	Veff Maxi
Dielectric withstanding voltage	1500	Veff mini
Insulation resistance	5000	M $\Omega$ mini

CABLE ASSEMBLY

Stripping	a	b	c	d	e	f
mm	19,0	3,00	0,00	0,00	0,00	0,00

Assembly instruction :

Recommended cable(s)

F1703-160

F1703-197

Characteristics indicated on this data sheet are those that can be achieved with the highest performance cable. Intrinsic limitations of the cable may diminish the performance of the assembly

Cable retention

- pull off \* N mini
- torque NA N.cm

MECHANICAL CHARACTERISTICS

Center contact retention	
Axial force – Mating end	27 N mini
Axial force – Opposite end	27 N mini
Torque	NA N.cm mini

TOOLING

Part Number	Description	Hexagon
.	.	.

OTHER CHARACTERISTICS

\* See the TDS cable assembly

ENVIRONMENTAL

Operating temperature	-65/+165	°C
Hermetic seal	NA	Atm.cm3/s
Panel leakage	IP67	

Issue : 0609 A

In the effort to improve our products, we reserve the right to make changes judged to be necessary.

**RADIALL®**

## STRAIGHT PLUG SOLDER TYPE

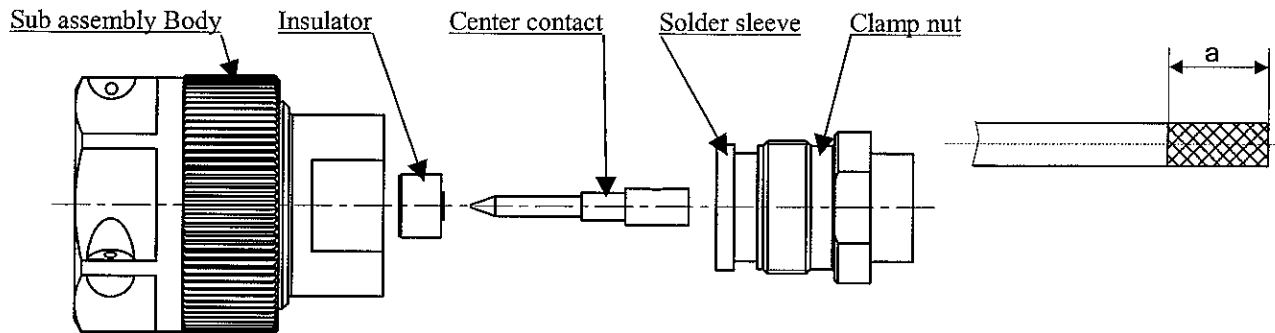
**R163.068.L01**

CABLE SHF 8+8M

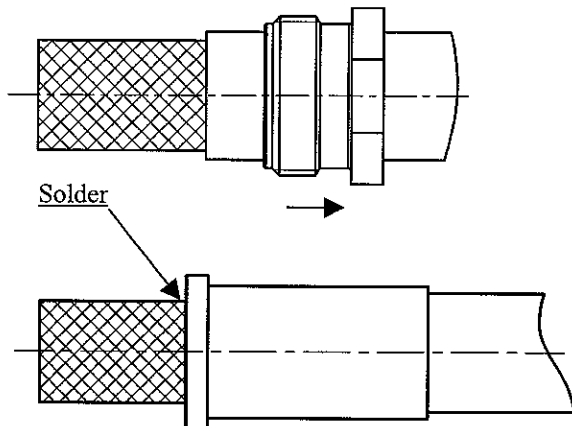
Series : N-18

## COMPONENTS

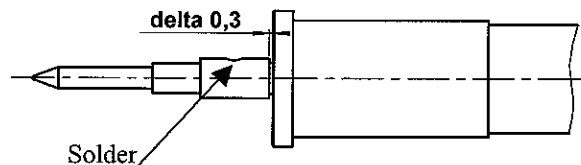
## STRIPPING DIMENSIONS


**1**

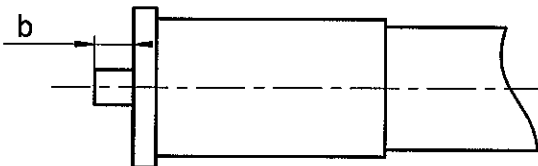
Strip the cable.  
Slide the clamp nut onto the cable.  
Solder the ferrule onto the braid of the cable.


**3**

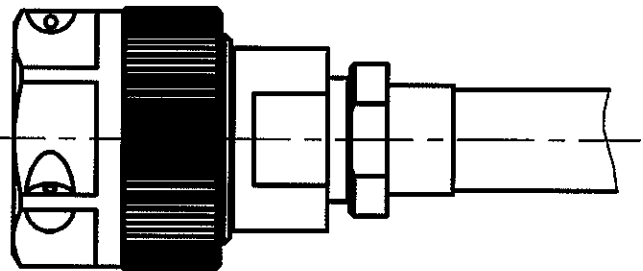
Slide the center contact onto the cable inserting between contact and ferrule the area gap.  
Solder the contact onto the inner conductor.


**2**

Cut the excess of braid and dielectric leveled on the sleeve.


**4**

Mount the whole body into the main sub assembly and screw the solder sleeve.  
(recommended coupling torque 300 N/cm)



Issue : 0609 A

In the effort to improve our products, we reserve the right to make changes judged to be necessary.


**RADIALL®**