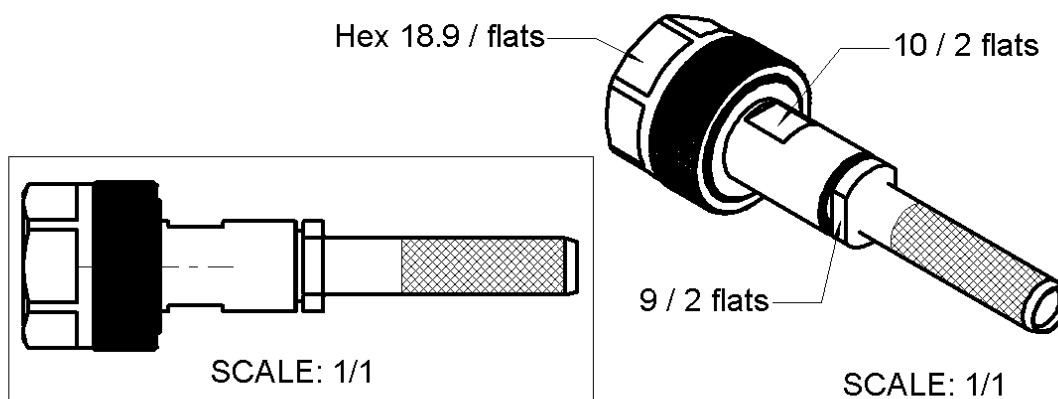
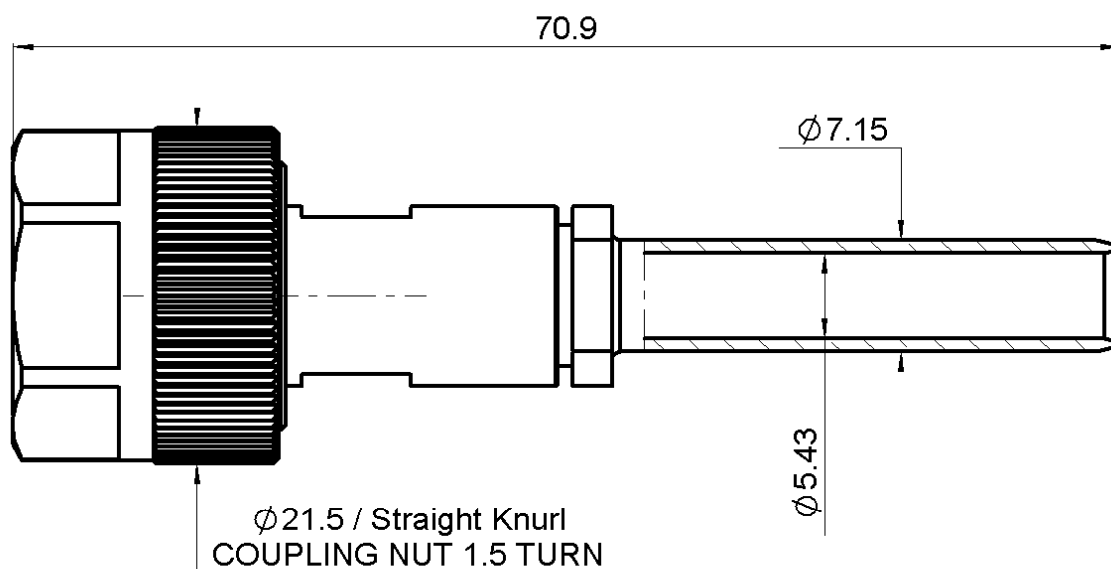


STRAIGHT PLUG SPECIAL NUT SOLDER TYPE**R163.064.141****CABLE MHD 142****Series : N-18**

All dimensions are in mm.



| COMPONENTS | MATERIALS | PLATING (µm) |
|----------------|----------------------------------|------------------------|
| BODY | INOX | PASSIVATION |
| CENTER CONTACT | BRASS | GOLD 1.3 OVER NICKEL 2 |
| OUTER CONTACT | - | - |
| INSULATOR | PEEK 450G | - |
| GASKET | FLUOROSILICONE + SILICONE RUBBER | GOLD 0.5 OVER NICKEL 2 |
| OTHERS PARTS | BRASS | - |
| - | - | - |
| - | - | - |

Issue : 1050 B

In the effort to improve our products, we reserve the right to make changes judged to be necessary.

**RADIALL®**

STRAIGHT PLUG SPECIAL NUT SOLDER TYPE**CABLE MHD 142****R163.064.141**

Series : N-18

PACKAGING

| Standard | Unit | Other |
|----------|------|-------------------|
| 1 | - | Contact us |

ELECTRICAL CHARACTERISTICS

| | | |
|---------------------------------|----------------------|--------------------------------|
| Impedance | 50 | Ω |
| Frequency | 0-18 | GHz |
| VSWR | 1.14 + 0,0000 | x F(GHz) Maxi |
| Insertion loss | 0.1 | $\sqrt{F}(\text{GHz})$ dB Maxi |
| RF leakage | - (NA) | - F(GHz)) dB Maxi |
| Voltage rating | 350 | Veff Maxi |
| Dielectric withstanding voltage | 750 | Veff mini |
| Insulation resistance | 5000 | M Ω mini |

MECHANICAL CHARACTERISTICS

| | |
|----------------------------|---------------------|
| Center contact retention | |
| Axial force – Mating end | 300 N mini |
| Axial force – Opposite end | 300 N mini |
| Torque | NA N.cm mini |

| | |
|--------------------|------------------|
| Recommended torque | |
| Mating | 400 N.cm |
| Panel nut | NA N.cm |
| Clamp nut | 170 N.cm |
| A/F clamp nut | 9,0000 mm |

| | |
|-------------|-------------------------|
| Mating life | 5000 Cycles mini |
| Weight | 42,6500 g |

ENVIRONMENTAL

| | |
|-----------------------|-----------------------|
| Operating temperature | -55/+125 °C |
| Hermetic seal | IP67 Atm.cm3/s |
| Panel leakage | NA |

SPECIFICATION**CABLE ASSEMBLY**

| Stripping | a | b | c | d | e | f |
|-----------|------|------|------|------|------|------|
| mm | 8,00 | 11,0 | 27,0 | 0,00 | 0,00 | 0,00 |

Assembly instruction :

Recommended cable(s)
MHD142

Characteristics indicated on this data sheet are those that can be achieved with the highest performance cable. Intrinsic limitations of the cable may diminish the performance of the assembly

Cable retention

| | |
|------------|-------------------|
| - pull off | 300 N mini |
| - torque | NA N.cm |

TOOLING

| Part Number | Description | Hexagon |
|-------------|-------------|---------|
| . | . | . |

OTHER CHARACTERISTICS

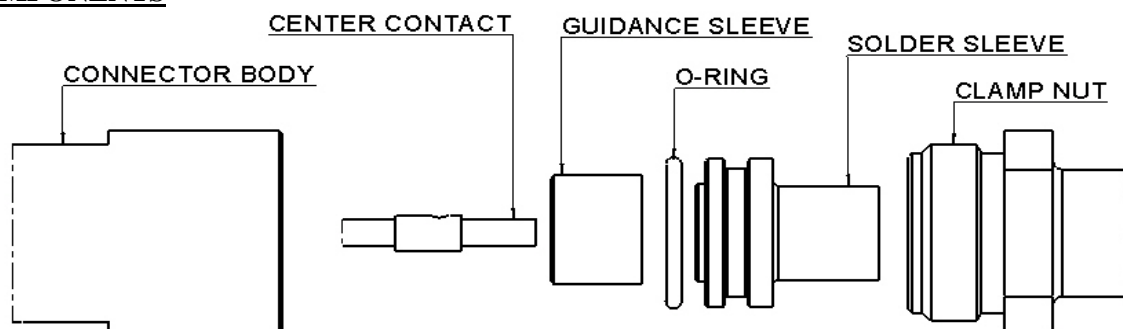
Issue : 1050 B

In the effort to improve our products, we reserve the right to make changes judged to be necessary.

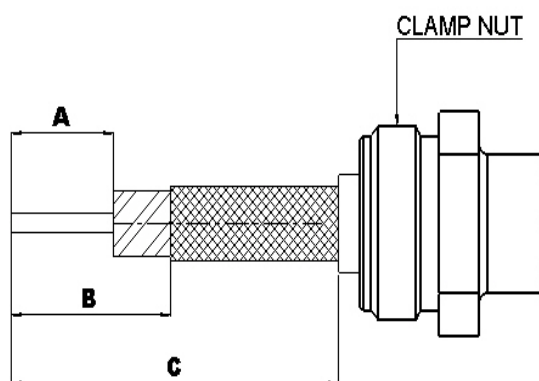
**RADIALL**®

STRAIGHT PLUG SPECIAL NUT SOLDER TYPE**R163.064.141****CABLE MHD 142**

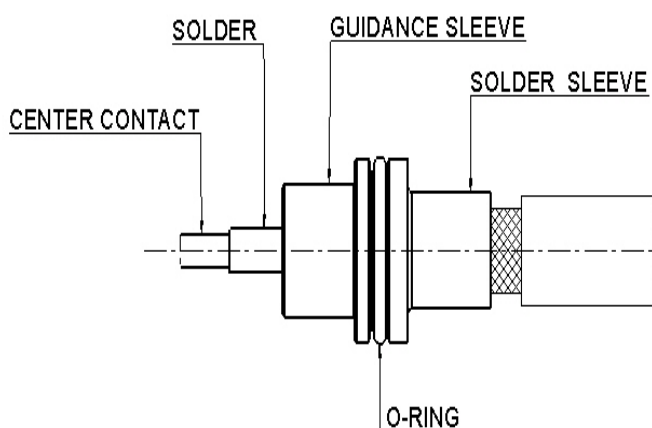
Series : N-18

COMPONENTS**1**

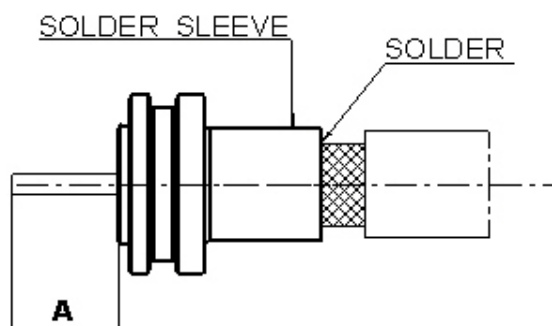
Strip the cable.
Slide the clamp nut onto the cable.

**3**

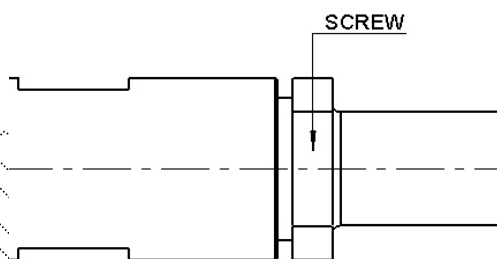
Mount the O-ring on the Solder sleeve .
Slide the Guidance Sleeve against the Solder sleeve and the center contact onto the inner conductor .
Solder the center contact onto the inner conductor.

**2**

Slide the Solder sleeve on the cable and solder .

**4**

Mount the whole body into the main sub assembly and screw the Clamp nut.

**Issue : 1050 B**

In the effort to improve our products, we reserve the right to make changes judged to be necessary.

**RADIALL**

®