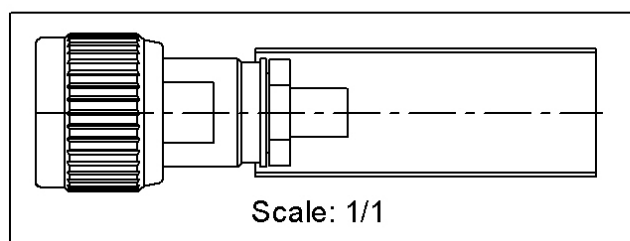
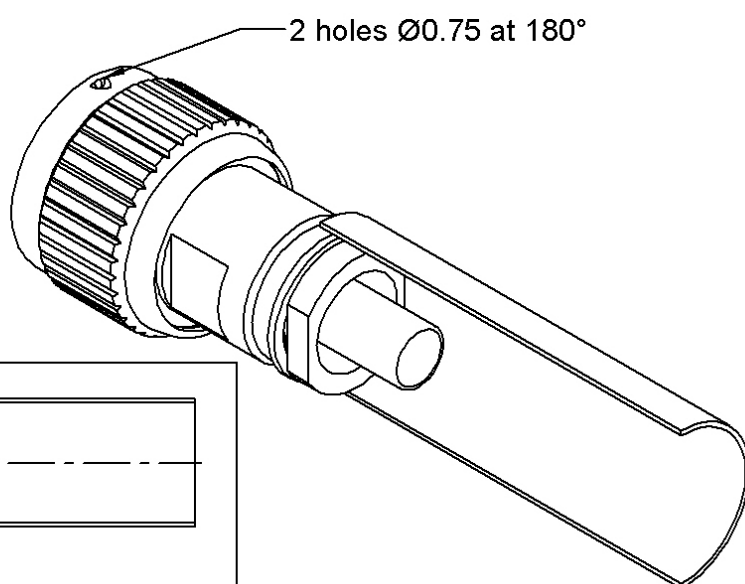
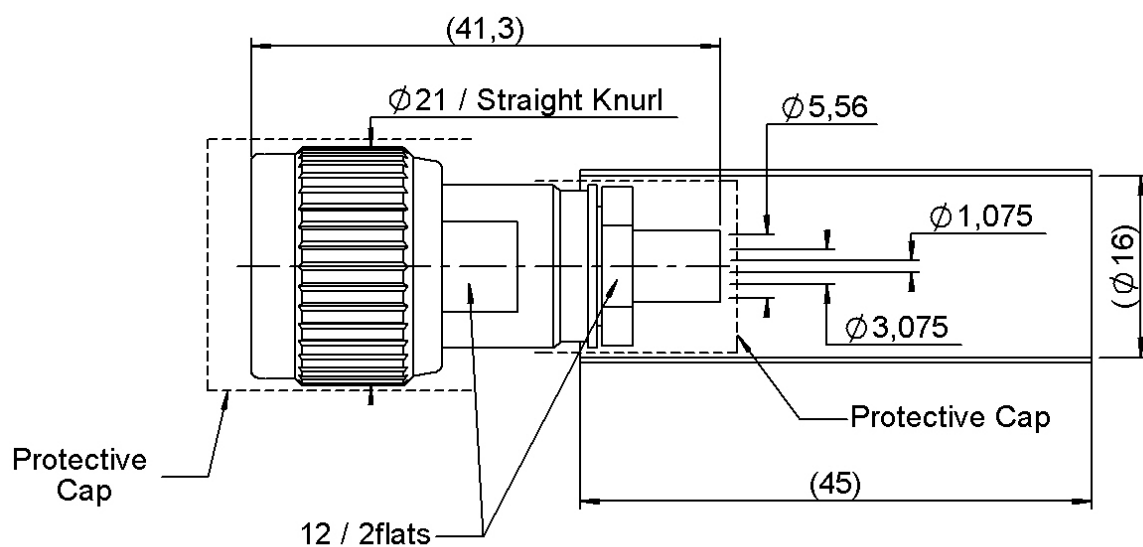


PAGE 1/3

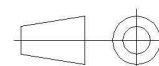
ISSUE  
**05-09-23H**

SERIES **N**

PART NUMBER **R161092200**



All dimensions are in mm. Tolerances according ISO 2768 m-H



COMPONENTS	MATERIALS	PLATING (µm)
Body	<b>BRASS</b>	<b>NICKEL</b>
Center contact	<b>BRASS</b>	<b>GOLD OVER NICKEL</b>
Outer contact	<b>BRASS</b>	<b>NICKEL</b>
Insulator	<b>PTFE</b>	
Gasket	<b>SILICONE RUBBER</b>	
Others parts	<b>BRASS</b>	<b>NICKEL</b>
-	-	-
-	-	-

PAGE 2/3

ISSUE  
05-09-23H

SERIES N

PART NUMBER R161092200

## PACKAGING

Standard	Unit	Other
50	Contact us	Contact us

## ELECTRICAL CHARACTERISTICS

Impedance	50	Ω
Frequency	0-3	GHz
VSWR	1.15 + 0,0000	x F(GHz) Maxi
Insertion loss	0.048	√F(GHz) dB Maxi
RF leakage	- ( 101	- F(GHz)) dB Maxi
Voltage rating	850	Veff Maxi
Dielectric withstanding voltage	1500	Veff mini
Insulation resistance	5000	MΩ mini

## MECHANICAL CHARACTERISTICS

Center contact retention		
Axial force – Mating End	27	N mini
Axial force – Opposite end	27	N mini
Torque	NA	N.cm mini

Recommended torque		
Mating	130	N.cm
Panel nut	NA	N.cm
Clamp nut	370	N.cm
A/F clamp nut	12,0000	mm

Mating life	500	Cycles mini
Nominal Weight (Add +15% for max weight)	39,6170	g

## ENVIRONMENTAL

Operating temperature	-55/+155	°C
Hermetic seal	NA	Atm.cm3/s
Panel leakage	NA	

## SPECIFICATION

ASNE0462 F01

## CABLE ASSEMBLY

Stripping	a	b	c	d	e	f
mm	9,0000	9,0000	23,0000	0,0000	0,0000	0,0000

Assembly instruction:

Recommended cable(s)

RG 142 BU  
RG 400  
RG 223  
KX 23  
RG 142 FTX

Characteristics indicated on this data sheet are those that can be achieved with the highest performance cable. Intrinsic limitations of the cable may diminish the performance of the assembly

Cable retention

- pull off	200	N mini
- torque	NA	N.cm

## TOOLING

Part Number	Description	Other
R282293000	PINCE SERT M 22520/5-01	-
R282235011	MACH SERT. M22520/5-11	5.41
Or - (ou)	OR - OU	
R282223000	CRIMPING TOOL HEX 1.73-5.41-6.48	5.41
And - (et)	AND (ET)	
282291	PINCE SERT M 22520/1-01	2x4 (pos. 7)
282997	LOCATOR	rouge

## OTHER CHARACTERISTICS

-

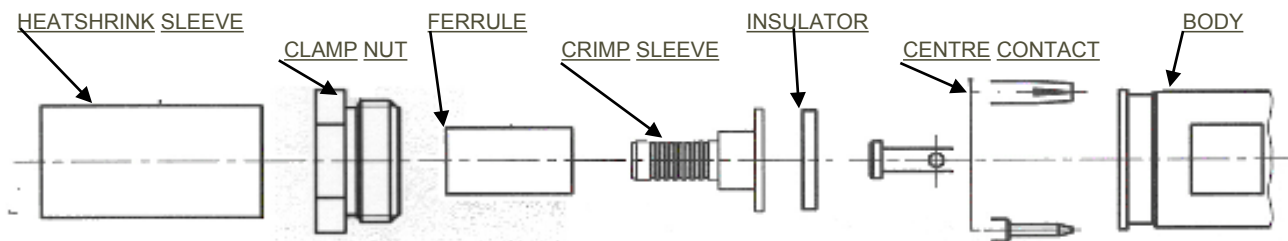
PAGE 3/3

ISSUE  
05-09-23H

SERIES N

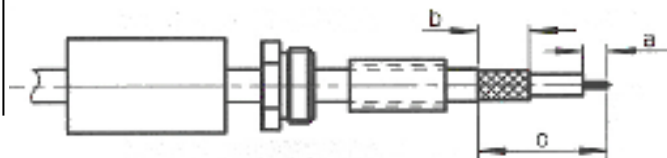
PART NUMBER **R161092200**

## COMPONENTS



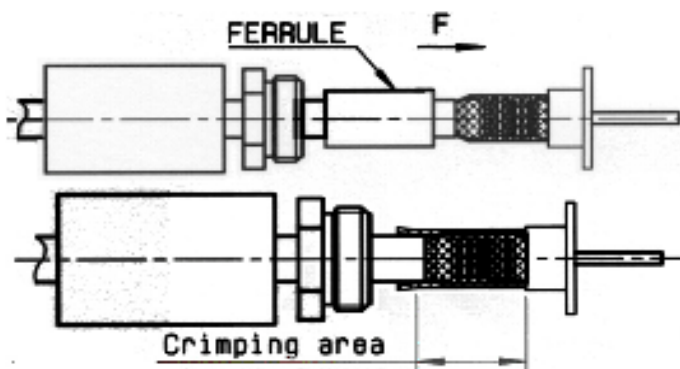
1

Slide onto the cable the heatshrink , the clamp nut and the ferrule.  
Strip the cable.



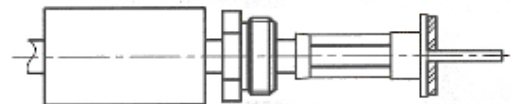
2

Slide the crimp sleeve under the braid .  
Slide ferrule over the braid against crimp sleeve. (In direction F)  
Crimp the ferrule with crimping tool + dies.



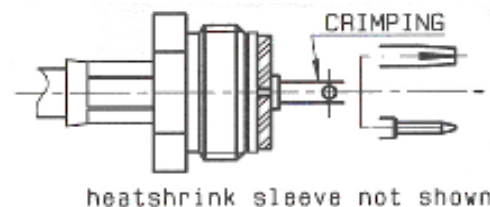
3

Cut the dielectric flush to crimp sleeve.  
Mount insulator against crimp sleeve.



4

Slide the centre contact onto the cable inner conductor against insulator .  
Crimp centre contact with crimping tool and positioner.  
Slide the clamp nut onto the crimp sleeve.



5

Screw sub-assembly into the connector body.  
(recommended coupling see connector TDS)  
Slide sleeve over ferrule and Heatshrink sleeve in place.

