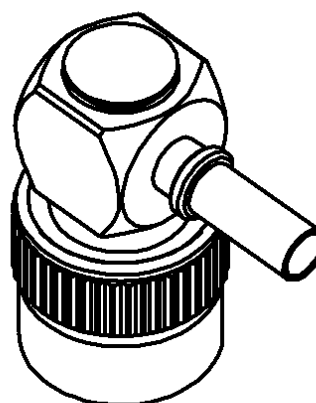
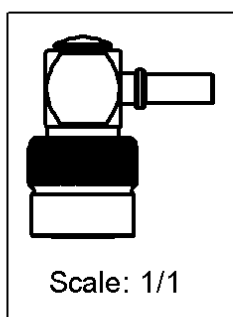
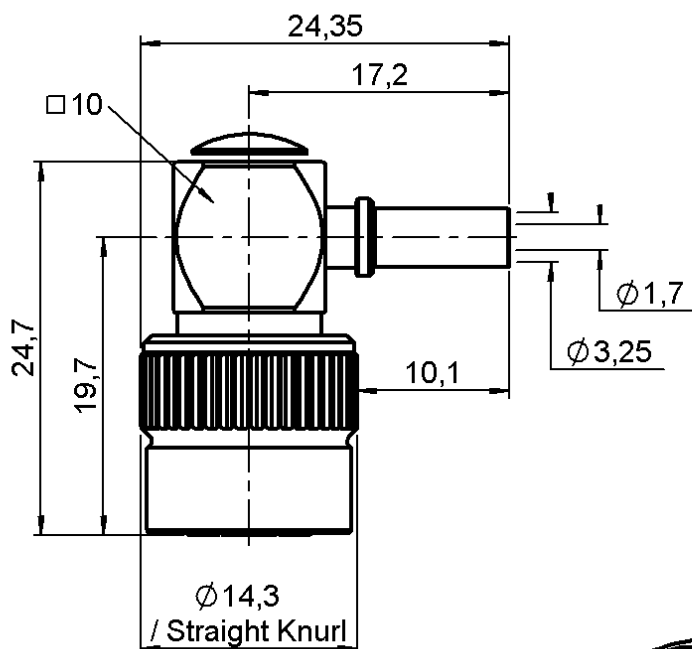


PAGE 1/2

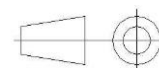
ISSUE
08-02-23B

SERIES TNC-COM

PART NUMBER R143181161



All dimensions are in mm.



COMPONENTS	MATERIALS	PLATING (μm)
Body	BRASS	NICKEL
Center contact	BRASS	GOLD OVER NICKEL
Outer contact	-	-
Insulator	POLYPROPYLENE	-
Gasket	SILICONE RUBBER	NICKEL
Others parts	BRASS	-
-	-	-
-	-	-

PAGE 2/2	ISSUE 08-02-23B	SERIES TNC-COM	PART NUMBER R143181161
-----------------	---------------------------	-----------------------	-------------------------------

PACKAGING

Standard	Unit	Other
100	Contact us	Contact us

ELECTRICAL CHARACTERISTICS

Impedance	50	Ω
Frequency	0-1.5	GHz
VSWR	NA + 0	x F(GHz) Maxi
Insertion loss	NA	\sqrt{F} (GHz) dB Maxi
RF leakage	- (NA	- F(GHz)) dB Maxi
Voltage rating	335	Veff Maxi
Dielectric withstanding voltage	1000	Veff mini
Insulation resistance	5000	M Ω mini

MECHANICAL CHARACTERISTICS

Center contact retention		
Axial force – Mating End	10	N mini
Axial force – Opposite end	10	N mini
Torque	NA	N.cm mini

Recommended torque		
Mating	NA	N.cm
Panel nut	NA	N.cm
Clamp nut	NA	N.cm
A/F clamp nut	0	mm

Mating life	100	Cycles mini
Nominal Weight (Add +15% for max weight)	15,34	g

ENVIRONMENTAL

Operating temperature	-35/+70	°C
Hermetic seal	NA	Atm.cm3/s
Panel leakage	NA	

SPECIFICATION

CABLE ASSEMBLY

Stripping mm	a	b	c	d	e	f
	2,5	6,5	16	0	13,5	0

Assembly instruction: **Crimp 05**

Recommended cable(s)

KX 22A
RG 188
RG 316

Characteristics indicated on this data sheet are those that can be achieved with the highest performance cable. Intrinsic limitations of the cable may diminish the performance of the assembly

Cable retention

- pull off	40	N mini
- torque	NA	N.cm

TOOLING

Part Number	Description	Other
R282293000	PINCE SERT M 22520/5-01	-
R282211000	PINCE SERT HEX 2.67-3.25-4.52	3.25
R282235003	MACH SERT M22520/5-03	3.25

OTHER CHARACTERISTICS

-