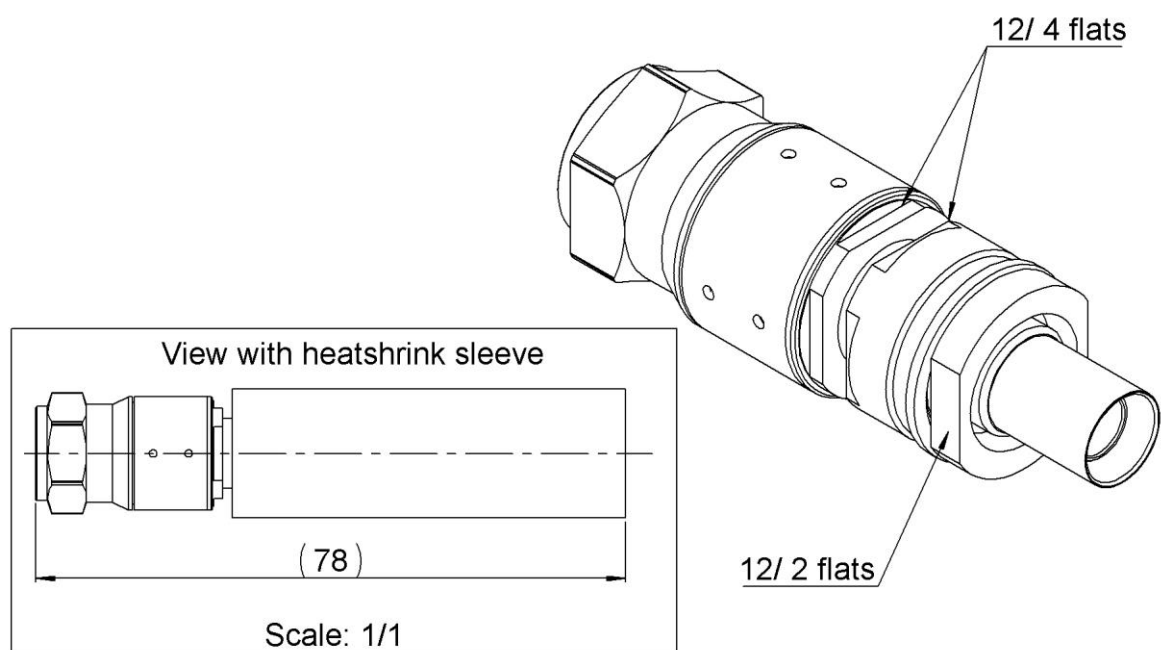
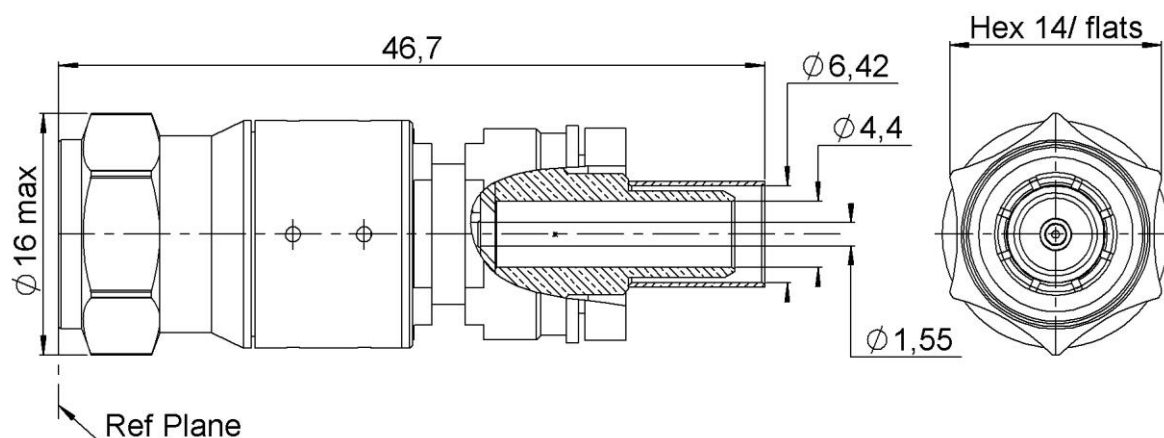


PAGE 1/3

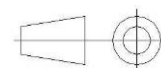
ISSUE
05-07-21A

SERIES **TNC**

PART NUMBER **R143064510**



All dimensions are in mm. Tolerances according ISO 2768 m-H



COMPONENTS	MATERIALS	PLATING (μm)
Body	BRASS	NICKEL
Center contact	BRASS	GOLD OVER NICKEL
Outer contact	BRASS	NICKEL
Insulator	PTFE	
Gasket	FLUOROSILICON	
Others parts	STAINLESS STEEL, BRASS	PASSIVATED, NICKEL
-	-	-
-	-	-

PAGE **2/3**

ISSUE
05-07-21A

SERIES **TNC**

PART NUMBER **R143064510**

PACKAGING

Standard	Unit	Other
1		Contact us

ELECTRICAL CHARACTERISTICS

Impedance	50	Ω
Frequency	0-6	GHz
VSWR	1,3 + 0,0000	x F(GHz) Maxi
Insertion loss	0,07	\sqrt{F} (GHz) dB Maxi
RF leakage	- (55*	- F(GHz)) dB Maxi
Voltage rating	500	Veff Maxi
Dielectric withstanding voltage	1500	Veff mini
Insulation resistance	5000	M Ω mini

MECHANICAL CHARACTERISTICS

Center contact retention		
Axial force – Mating End	27	N mini
Axial force – Opposite end	27	N mini
Torque	NA	N.cm mini

Recommended torque		
Mating	125	N.cm
Panel nut	NA	N.cm
Clamp nut	370	N.cm
A/F clamp nut	12,0000	mm

Mating life	250	Cycles mini
Nominal Weight (Add +15% for max weight)	30,7862	g

ENVIRONMENTAL

Operating temperature	-65/+165	°C
Hermetic seal	NA	Atm.cm3/s
Panel leakage	NA	

SPECIFICATION

CABLE ASSEMBLY

Stripping	a	b	c	d	e	f
mm	6,8000	9,0000	24,6000	0,0000	0,0000	0,0000
			0			

Assembly instruction:

Recommended cable(s)

EN4604-010KX

Characteristics indicated on this data sheet are those that can be achieved with the highest performance cable. Intrinsic limitations of the cable may diminish the performance of the assembly

Cable retention

- pull off	180	N mini
- torque	NA	N.cm

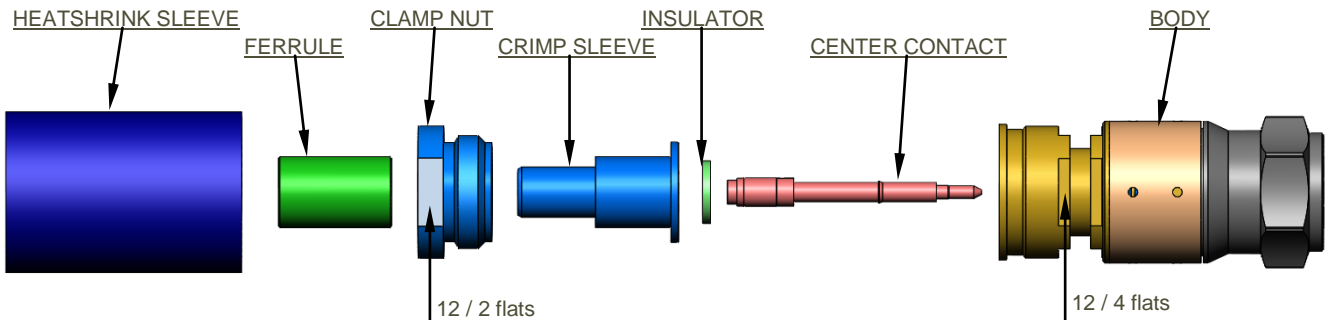
TOOLING

Part Number	Description	Hexagon
282291	CRIMPING TOOL M22520/1-01	2x4 pts (Posit 8)
R282589206	POSIT M22520/1-01 STR 311901	
R282293000	CRIMPING TOOL M22520/5-01	
R282235013	MACH SERT M 22520/5-13	Hex 6,48

OTHER CHARACTERISTICS

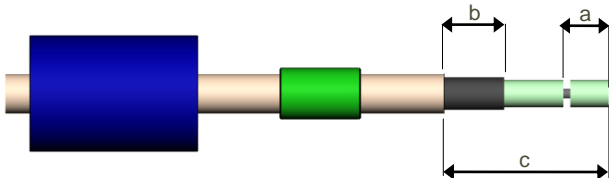
***-55dB at 2-3GHz**

PAGE 3/3	ISSUE 05-07-21A	SERIES TNC	PART NUMBER R143064510
----------	--------------------	------------	------------------------



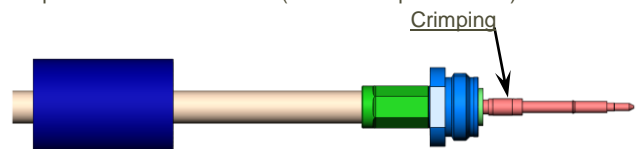
1

Slide onto the cable the heatshrink and the ferrule.
Strip the cable. Shift the dielectric on the inner conductor of the cable to 1 mm, and leave it in position.
Fan the braid.
Cut the foil.



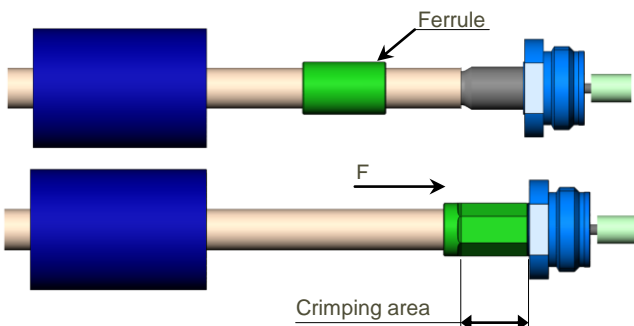
4

Slide the center contact onto the cable inner conductor against insulator.
Crimp center contact with the crimping tool 282.291 and the positioner R282.589.206 (selector on position n°8)



2

Slide the clamp nut onto the crimp sleeve.
Slide sub-assembly under the braid.
Slide ferrule over the braid against clamp nut (In direction F)
Crimp the ferrule with crimping tool R282.293.000 + dies R282.235.013 (Hex 6.48).



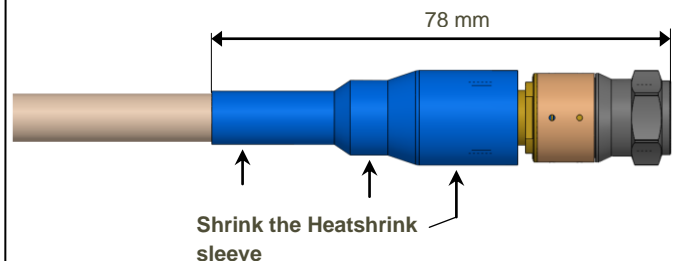
3

Remove the dielectric of cable, if necessary remove dielectric remains on the inner conductor of the cable.
Clean the face of the dielectric. Mount the insulator against crimp sleeve.



5

Screw sub-assembly into the connector body.
(recommended coupling torque: 370N.cm)
Slide the sleeve over the ferrule and heatshrink it in place.



NOTE:

The cable must be clamped at 30 cm maxi from the crimping area of the connector.

The nut must be tightened at the specific torque after clamping.