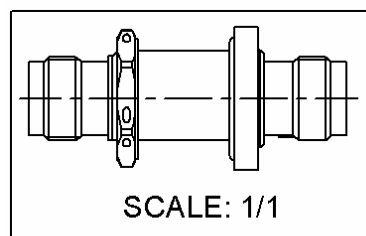
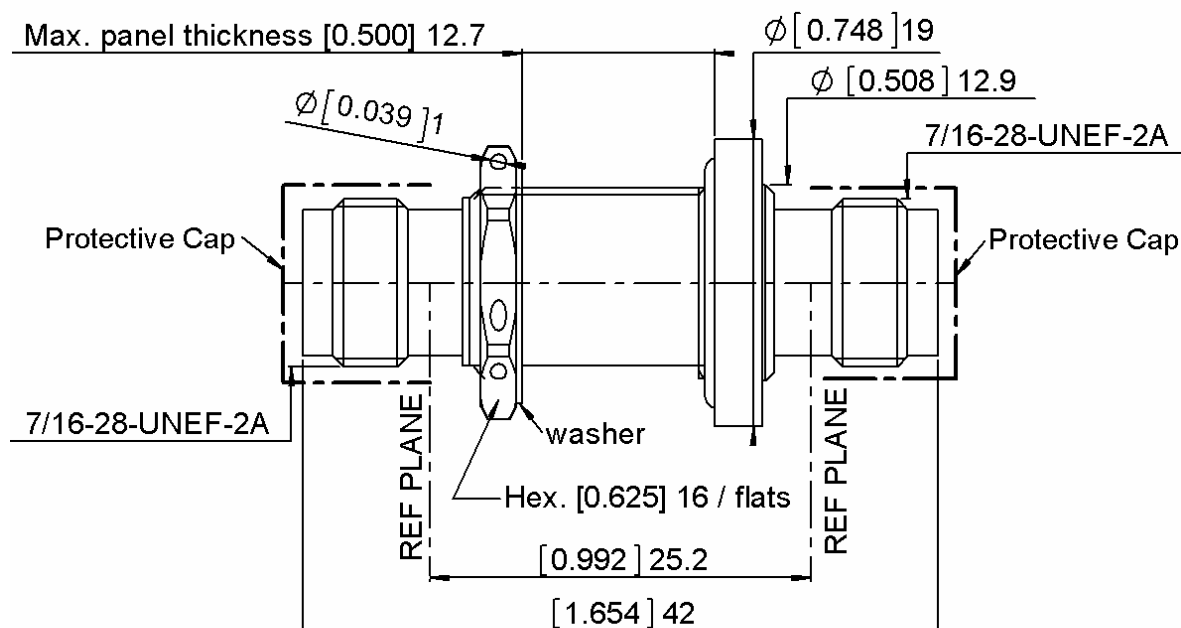
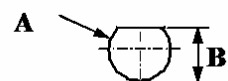


FEMALE-FEMALE HERMETIC ADAPTOR

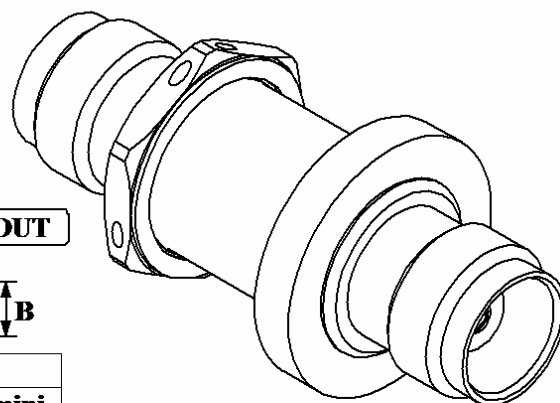
BULKHEAD PANEL SEAL

R143.753.130

Series : TNC


PANEL CUT OUT


	mm	
	Maxi	mini
A	12.8	12.7
B	11.99	11.89



All dimensions are in mm.



COMPONENTS	MATERIALS	PLATING (μm)
BODY CENTER CONTACT OUTER CONTACT INSULATOR GASKET NUT WASHER -	BRASS. BERYLLIUM COPPER PTFE+GLASS BEAD BLACK FLUOROCARBON STAINLESS STEEL BRASS. -	NICKEL 2 GOLD 0.5 OVER NICKEL 2 PASSIVATED NICKEL 2 -

Issue : 1210 B

In the effort to improve our products, we reserve the right to make changes judged to be necessary.

RADIAL

FEMALE-FEMALE HERMETIC ADAPTOR**R143.753.130****BULKHEAD PANEL SEAL**Series : **TNC****PACKAGING**

Standard	Unit	Other
100	'W' option	Contact us

SPECIFICATION**ELECTRICAL CHARACTERISTICS**

Impedance	50	Ω
Frequency	0-11	GHz
VSWR	1.45 + 0,0000	x F(GHz) Maxi
Insertion loss	0.07	$\sqrt{F}(\text{GHz})$ dB Maxi
RF leakage	- (57)	- F(GHz)) dB Maxi
Voltage rating	500	Veff Maxi
Dielectric withstanding voltage	1500	Veff mini
Insulation resistance	5000	M Ω mini

ENVIRONMENTAL

Operating temperature	-65/+100	$^{\circ}\text{C}$
Hermetic seal	10-8	Atm.cm ³ /s
Panel leakage	IP67	

OTHER CHARACTERISTICS

Assembly instruction

Others :

MECHANICAL CHARACTERISTICS

Center contact retention	
Axial force – Mating end	26 N mini
Axial force – Opposite end	26 N mini
Torque	NA N.cm mini
Recommended torque	
Mating	NA N.cm
Panel nut	260 N.cm
Mating life	500 Cycles mini
Weight	30,4200 g

Issue : 1210 B

In the effort to improve our products, we reserve the right to make changes judged to be necessary.

RADIAL 