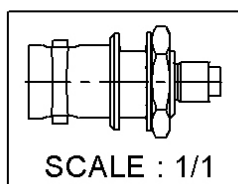
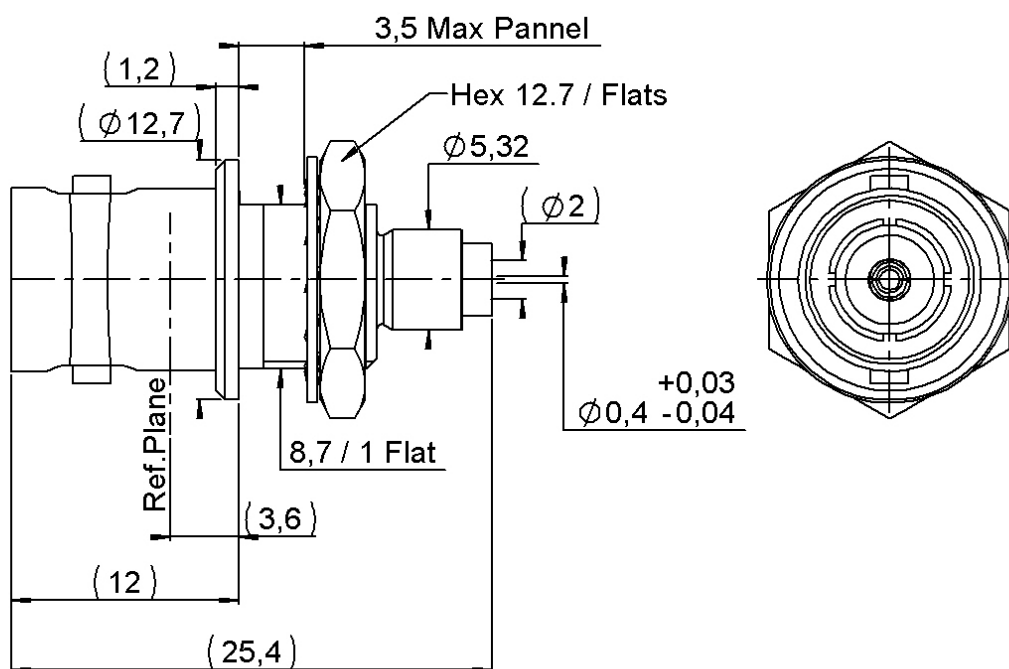


PAGE 1/3

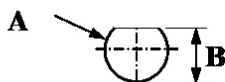
ISSUE
15-10-24B

SERIES **BNC**

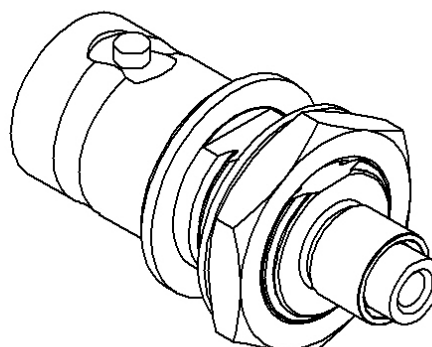
PART NUMBER **R141303503**



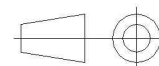
PANEL CUT OUT



	mm	
	Maxi	mini
A	9.6	9.5
B	8.85	8.75



All dimensions are in mm. Tolerances according ISO 2768 m-H



COMPONENTS	MATERIALS	PLATING (µm)
Body	BRASS	NICKEL .
Center contact	BRASS	GOLD OVER NICKEL
Outer contact	-	
Insulator	PTFE	
Gasket	-	
Others parts	BRASS	NICKEL .
-	-	-
-	-	-

PAGE **2/3**

ISSUE
15-10-24B

SERIES **BNC**

PART NUMBER **R141303503**

PACKAGING

Standard	Unit	Other
100	Contact us	Contact us

ELECTRICAL CHARACTERISTICS

Impedance	50	Ω
Frequency	0-4	GHz
VSWR	*1.35 + 0,0000	x F(GHz) Maxi
Insertion loss	*0.12	\sqrt{F} (GHz) dB Maxi
RF leakage	- (NA)	- F(GHz)) dB Maxi
Voltage rating	250	Veff Maxi
Dielectric withstanding voltage	750	Veff mini
Insulation resistance	5000	M Ω mini

MECHANICAL CHARACTERISTICS

Center contact retention		
Axial force – Mating End	10	N mini
Axial force – Opposite end	10	N mini
Torque	NA	N.cm mini

Recommended torque		
Mating	NA	N.cm
Panel nut	250	N.cm
Clamp nut	NA	N.cm
A/F clamp nut	0,0000	mm

Mating life	100	Cycles mini
Nominal Weight (Add +15% for max weight)	8,4000	g

ENVIRONMENTAL

Operating temperature	-65/+165	°C
Hermetic seal	NA	Atm.cm3/s
Panel leakage	NA	

SPECIFICATION

CABLE ASSEMBLY

Stripping	a	b	c	d	e	f
mm	4,0000	11,0000	0,0000	0,0000	5,0000	1,5000

Assembly instruction:

Recommended cable(s)

111258 FTX

Characteristics indicated on this data sheet are those that can be achieved with the highest performance cable. Intrinsic limitations of the cable may diminish the performance of the assembly

Cable retention

- pull off	40	N mini
- torque	NA	N.cm

TOOLING

Part Number	Description	Other
R282235009	MACH SERT M 22520/5-09	4.52
R282211000	PINCE SERT HEX 2.67-3.25-4.52	4.52
R282293000	CRIMPING TOOL : M22520/5-01	

OTHER CHARACTERISTICS

***DC – 1GHz**

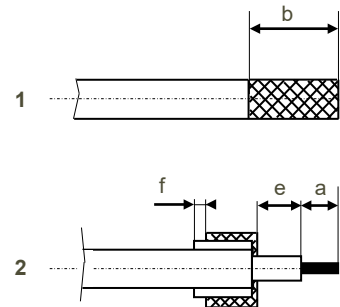
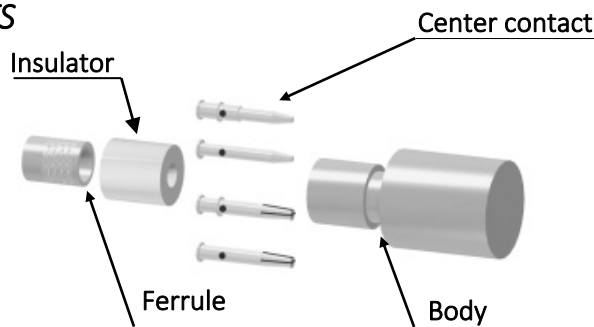
PAGE 3/3

ISSUE
15-10-24B

SERIES **BNC**

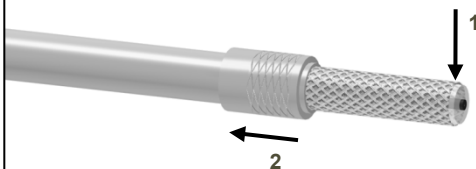
PART NUMBER **R141303503**

COMPONENTS



1

Strip the cable as shown in sketch 1.
Slide the ferrule until it bottoms against the sleeve.



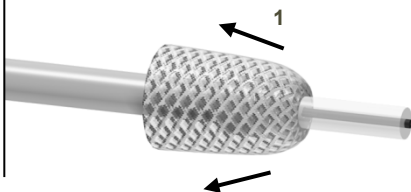
4

Slide the center contact on until it bottoms against the insulator back nut.
Solder the contact.



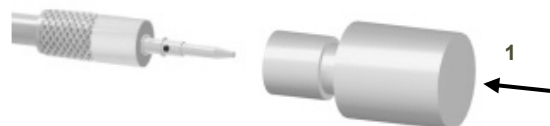
2

Fold the braid back.
Trim off the extra braid as shown in sketch 2.



5

Mount the body onto the sub-assembly.



3

Trim the inner conductor as shown in sketch 2.
Slide insulator onto cable dielectric.



6

Crimp the body with crimping tool (see connector TDS).

