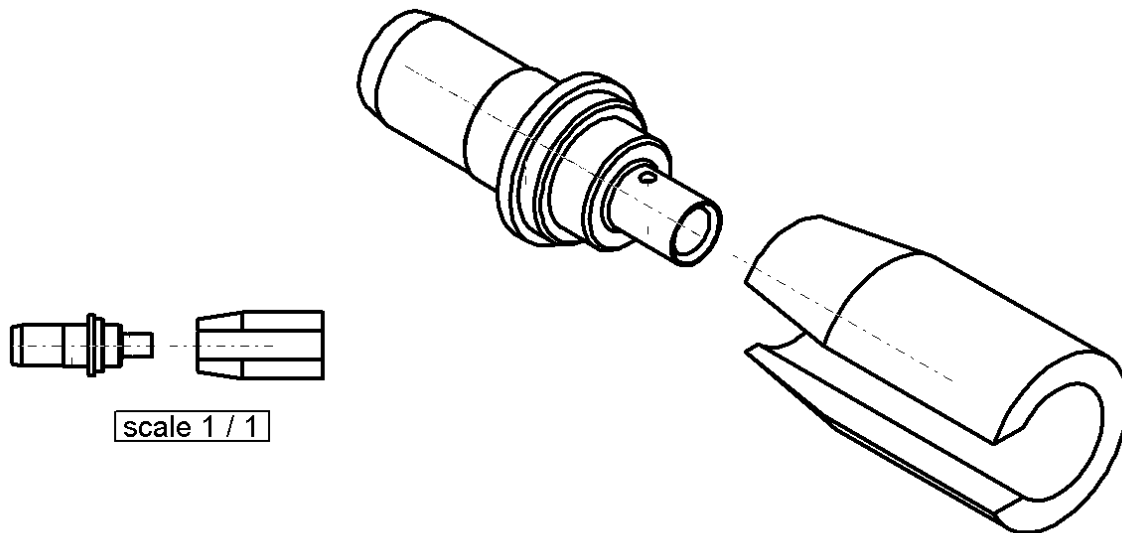
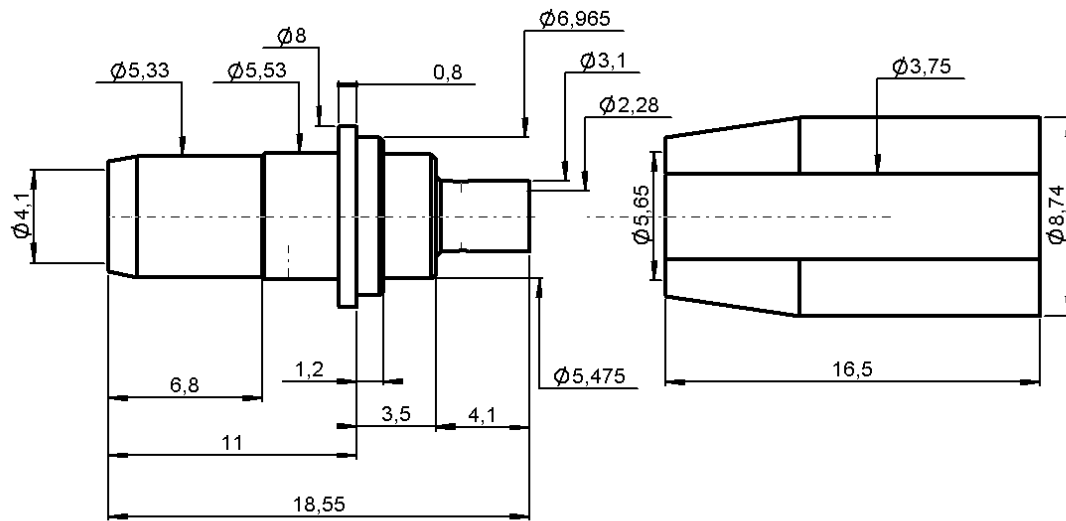


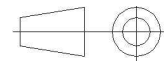
PANEL PRESS-IN STRAIGHT PLUG
SOLDERING ON SEMI - RIGIDE .085

R128.053.000

Series : BMA



All dimensions are in mm.



COMPONENTS	MATERIALS	PLATINGS (μm)
BODY	STAINLESS STEEL	GOLD OVER NICKEL
CENTER CONTACT	BERYLLIUM COPPER	GOLD OVER NICKEL
OUTER CONTACT	-	-
INSULATOR	PTFE	-
GASKET	-	-
OTHERS PARTS	-	-
-	-	-
-	-	-

Issue : 0422 B

In the effort to improve our products, we reserve the right to make changes judged to be necessary.



PANEL PRESS-IN STRAIGHT PLUG**SOLDERING ON SEMI - RIGIDE .085****R128.053.000**Series : **BMA****PACKAGING**

Standard	Unit	Other
1	-	Contact us

ELECTRICAL CHARACTERISTICS

Impedance	50	Ω
Frequency	0-22	GHz
VSWR	1.05 + 0.010	x F(GHz) Maxi
Insertion loss	.03	$\sqrt{F}(\text{GHz})$ dB Maxi
RF leakage	- (AD)	- F(GHz)) dB Maxi
Voltage rating	335	Veff Maxi
Dielectric withstanding voltage	1000	Veff mini
Insulation resistance	5000	M Ω mini

MECHANICAL CHARACTERISTICS

Center contact retention	
Axial force – Mating end	27 N mini
Axial force – Opposite end	27 N mini
Torque	NA N.cm mini
Recommended torque	
Mating	NA N.cm
Panel nut	NA N.cm
Clamp nut	NA N.cm
A/F clamp nut	0.000 mm
Mating life	0 Cycles mini
Weight	0.000 g

ENVIRONMENTAL

Operating temperature	-65/+125 °C
Hermetic seal	NA Atm.cm3/s
Panel leakage	NA

SPECIFICATION**CABLE ASSEMBLY**

Stripping	a	b	c	d	e	f
mm	1.78	0.00	0.00	0.00	0.00	0.00

Assembly instruction :

Recommended cable(s)

KS 1

RG 405

Characteristics indicated on this data sheet are those that can be achieved with the highest performance cable. Intrinsic limitations of the cable may diminish the performance of the assembly

Cable retention

- pull off	136 N mini
- torque	NA N.cm

TOOLING

Part Number	Description	Hexagon
.	.	.
R282.740.000	SOLDERING MOUNTING	MONTAG E DE SOUDUR E
R282.062.000	POINTER GAUGE	APPOINT EUR
R282.051.000	STRIPPING TOOL	DENUDE UR
R282.860.100	SOLDERING POSITIONER	

OTHERS CHARACTERISTICS

-

Issue : **0422 B**

In the effort to improve our products, we reserve the right to make changes judged to be necessary.

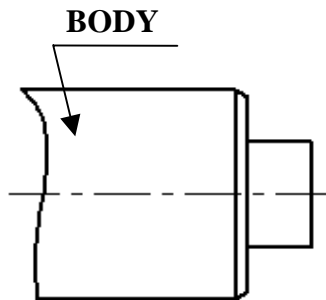
**RADIALL** ®

PANEL PRESS-IN STRAIGHT PLUG
SOLDERING ON SEMI - RIGIDE .085

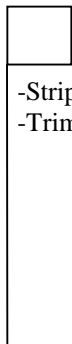
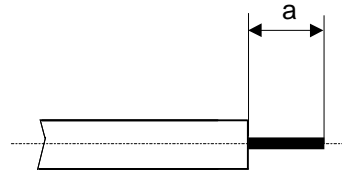
R128.053.000

Series : BMA

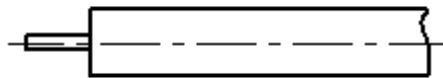
COMPONENTS



STIPPING DIMENSIONS

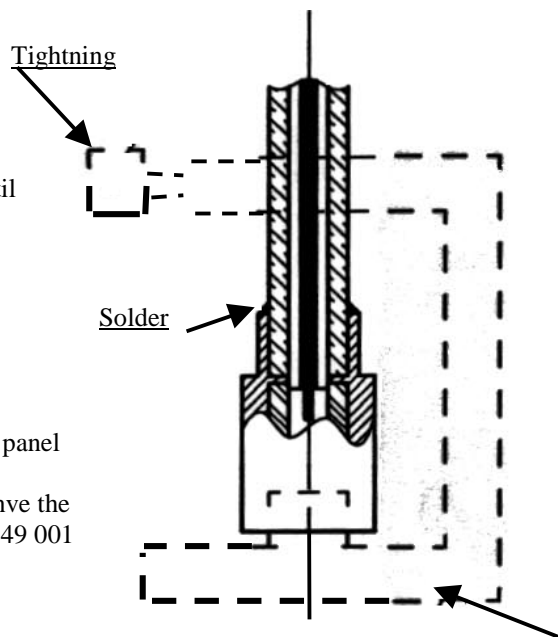


- Strip the cable with the cable stripping tool.
- Trim the cable inner conductor with the trimmer.



- Introduce the cable into the body until contact with the body shoulder..
- Place the sub-assembly on assembly jig
- Solder body on the cable.
- Let assembly cool down before removing it from the jig.

After assembling connector into the panel
 push the sleeve home.
 For dissassembling connector remove the
 Sleeve and use extraction tool 282 549 001



Issue : 0422 B

In the effort to improve our products, we reserve the right to make changes judged to be necessary.



RADIALL ®