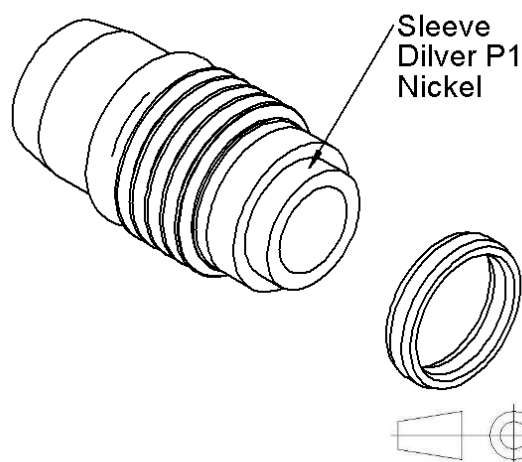
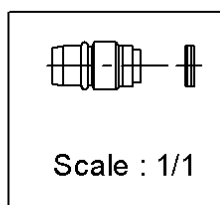
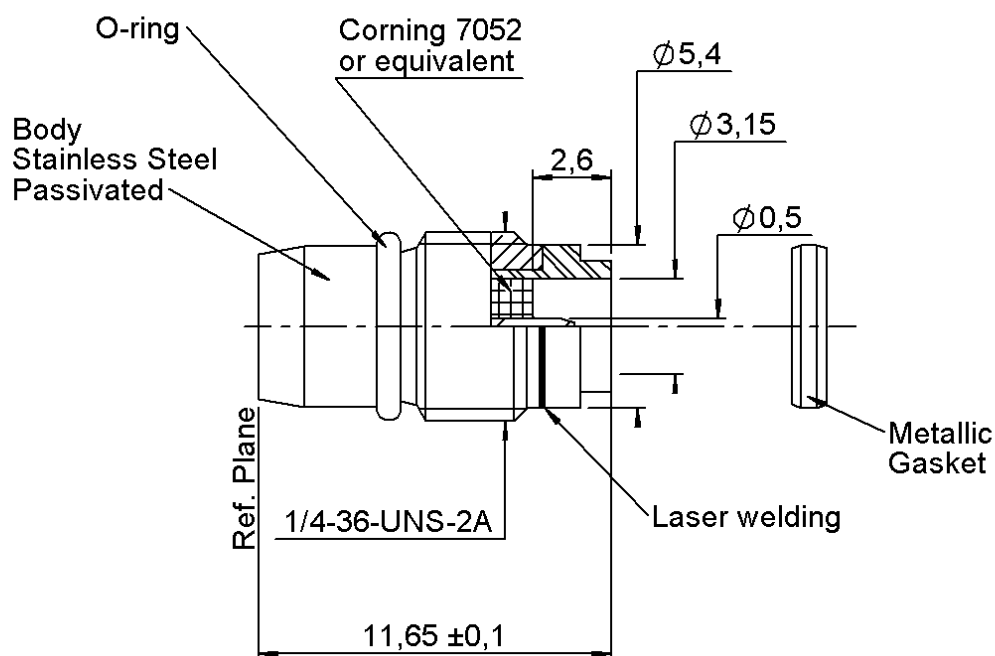


PAGE 1/3

ISSUE 24-07-18A

SERIES BMA

PART NUMBER R128639111



All dimensions are in mm. Tolerances according ISO 2768 m-H

COMPONENTS	MATERIALS	PLATING (μm)
Body	STAINLESS STEEL	PASSIVATED
Center contact	BERYLLIUM COPPER	GOLD 1.3 OVER NICKEL2
Outer contact		
Insulator	PTFE+GLASS BEAD	
Gasket	ALUMINIUM	
Others parts	DILVER P1	NICKEL 2
-	-	-
-	-	-

PAGE 2/3

ISSUE **24-07-18A**

SERIES **BMA**

PART NUMBER **R128639111**

PACKAGING

Standard	Unit	Other
100	Contact us	Contact us

ELECTRICAL CHARACTERISTICS

Impedance		50	Ω
Frequency		0-22	GHz
VSWR	1.1*	+	0,0100 x F(GHz) Maxi
Insertion loss		0.07*	√F(GHz) dB Maxi
RF leakage	- (NA	- F(GHz) dB Maxi
Voltage rating		500	Veff Maxi
Dielectric withstanding voltage		1500	Veff mini
Insulation resistance		5000	MΩ mini

MECHANICAL CHARACTERISTICS

Center contact retention			
Axial force – Mating End		27	N mini
Axial force – Opposite end		27	N mini
Torque		NA	N.cm mini
Recommended torque			
Mating		NA	N.cm
Panel nut		280	N.cm
Mating life		500	Cycles mini
Weight		1,5000	g

ENVIRONMENTAL

Operating temperature	-65/+165	°C
Hermetic seal	10-8	Atm.cm3/s
Panel leakage	NA	

SPECIFICATION

OTHER CHARACTERISTICS

Assembly instruction:

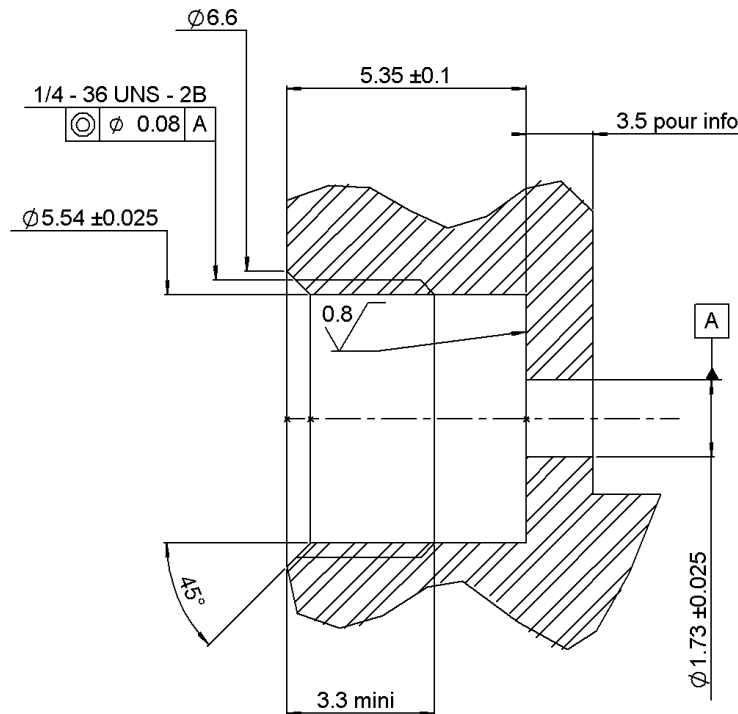
Others:

***Coaxial Transmission Line Only**

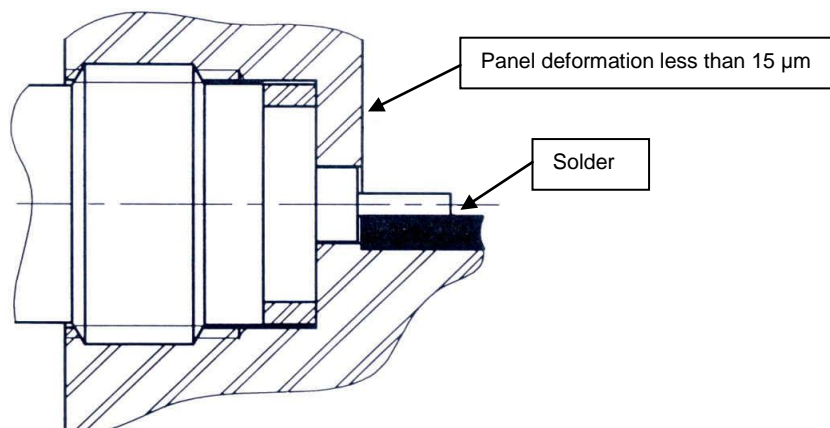
Compatibility with the following P/N :

R280.470.060 R280.470.070

PANEL DRILLING



RECOMMENDED MOUNTING HOLE DETAIL



Mount metal gasket onto connector. Screw the whole into the housing. Tighten the connector up to 280Ncm+or-10Ncm(use special tooling set RADIAL R282.340.000)Thus the connexion hermeticity is guaranteed at 10-8cc/sec.

Then solder the pin on the track.

Be careful not to put too much solder