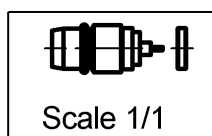
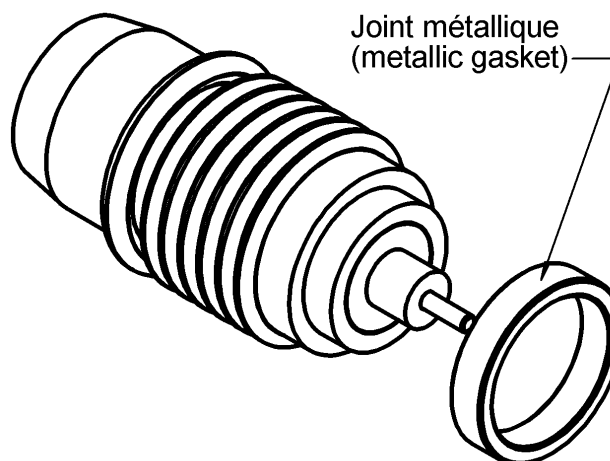
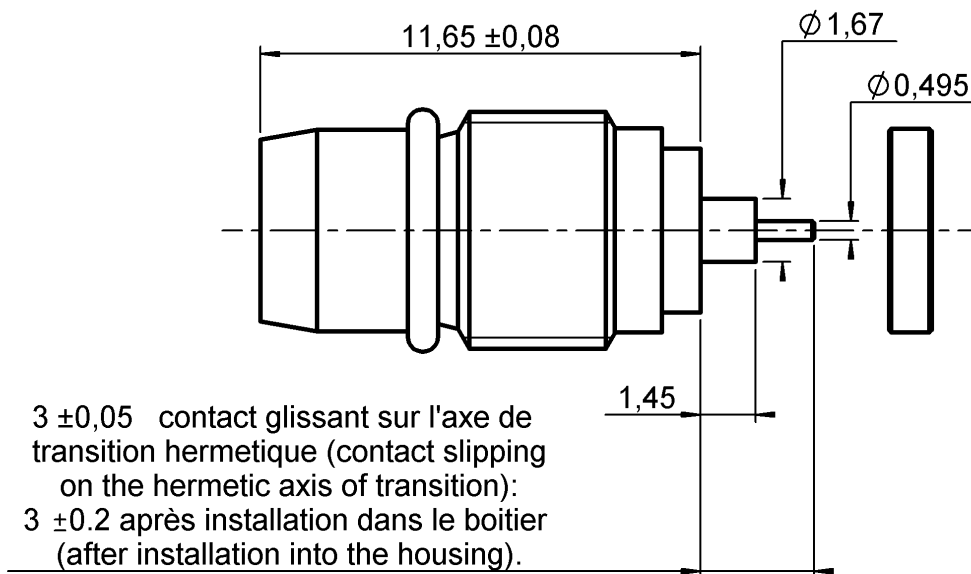


MALE HERMETICAL RECEPTACLE

R128.639.050

SCREW TYPE

Series : **BMA**



All dimensions are in mm.



COMPONENTS	MATERIALS	PLATING (μm)
BODY	STAINLESS STEEL	GOLD 0.5 OVER NICKEL 2
CENTER CONTACT	BERYLLIUM COPPER	GOLD 1.3 OVER NICKEL 2
OUTER CONTACT	-	-
INSULATOR	PTFE	-
GASKET	SILICONE RUBBER	-
OTHERS PARTS	-	-
-	-	-
-	-	-

Issue : 0650 A

In the effort to improve our products, we reserve the right to make changes judged to be necessary.



MALE HERMETICAL RECEPTACLE**R128.639.050****SCREW TYPE**Series : **BMA****PACKAGING**

Standard	Unit	Other
100	'W' option	Contact us

SPECIFICATION**ELECTRICAL CHARACTERISTICS**

Impedance	50	Ω
Frequency	0-22	GHz
VSWR	1.04 * + 0,0090	x F(GHz) Maxi
Insertion loss	.03	$\sqrt{F}(\text{GHz})$ dB Maxi
RF leakage	- (NA)	- F(GHz)) dB Maxi
Voltage rating	500	Veff Maxi
Dielectric withstanding voltage	1500	Veff mini
Insulation resistance	5000	M Ω mini

ENVIRONMENTAL

Operating temperature	-65/+125	$^{\circ}\text{C}$
Hermetic seal	10-7	Atm.cm ³ /s
Panel leakage	NA	

OTHER CHARACTERISTICS

Assembly instruction

Others :

*COAXIAL TRANSMISSION LINE ONLY

MECHANICAL CHARACTERISTICS

Center contact retention	
Axial force – Mating end	27 N mini
Axial force – Opposite end	27 N mini
Torque	NA N.cm mini
Recommended torque	
Mating	NA N.cm
Panel nut	280 N.cm
Mating life	500 Cycles mini
Weight	1,3000 g

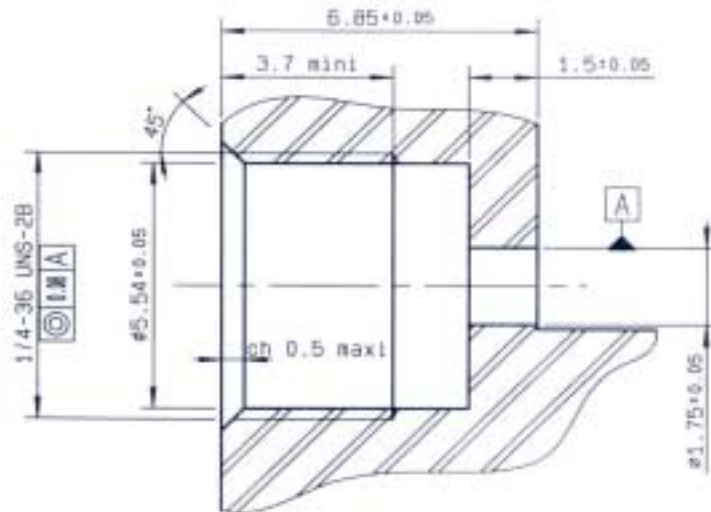
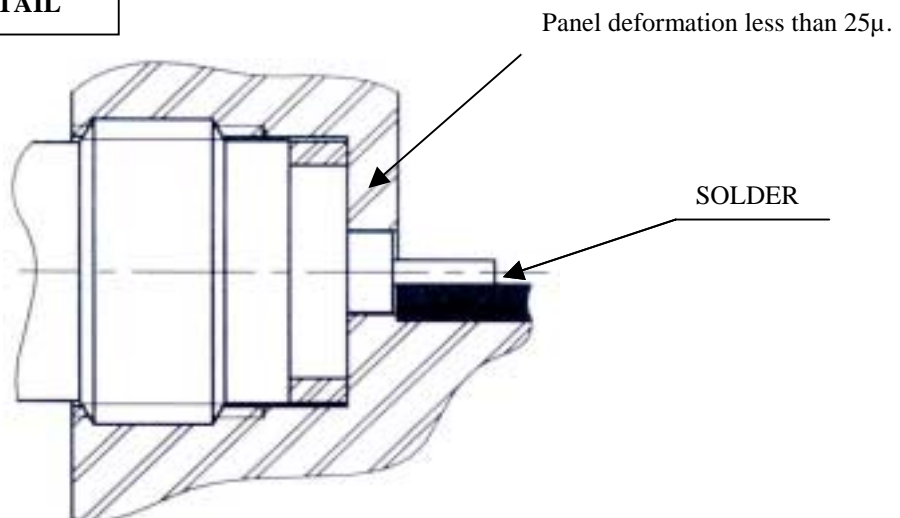
Issue : 0650 A

In the effort to improve our products, we reserve the right to make changes judged to be necessary.



MALE HERMETICAL RECEPTACLE**SCREW TYPE****R128.639.050**

Series : BMA

MOUNTING HOLE**MOUNTING HOLE DETAIL**

Assemble metal gasket onto connector. Screw both parts into the housing. Tighten the connector up to 280 Ncm (25 inch-pounds) torque (use special tooling set RADIAL R282.340.000).

Thus the connection hermeticity is guaranteed at 10-7cc/sec.

Then solder the pin on the track.

Be careful not to put too much solder.

Issue : 0650 A

In the effort to improve our products, we reserve the right to make changes judged to be necessary.

