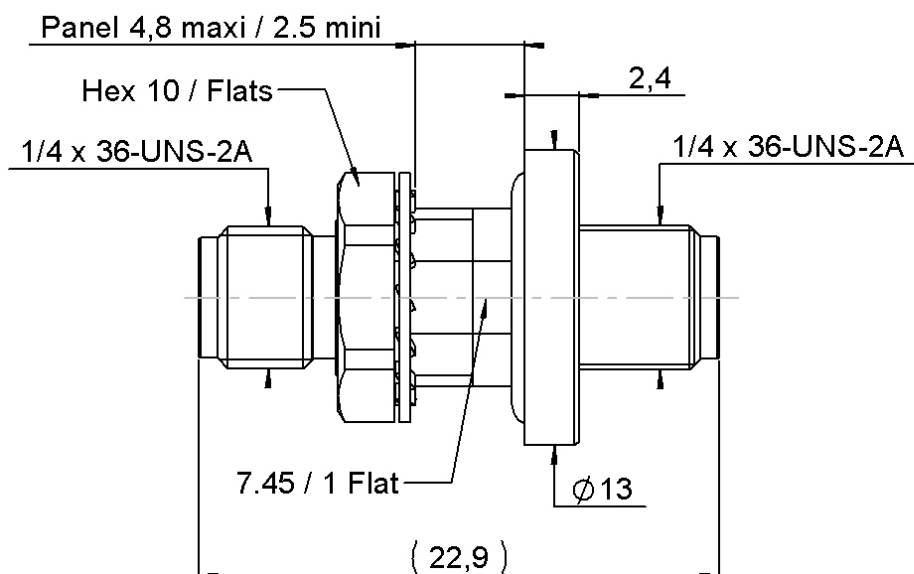


PAGE 1/2

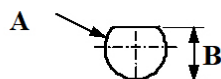
ISSUE  
10-02-25A

SERIES **SMA2.9**

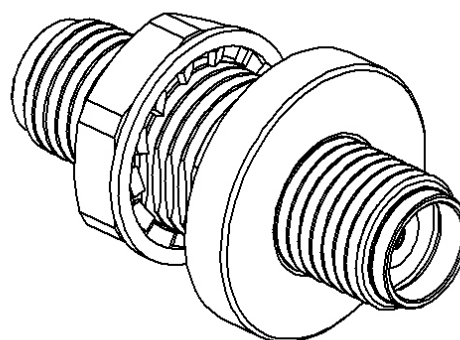
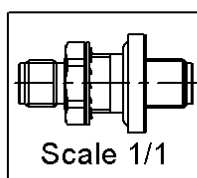
PART NUMBER **R127753130**



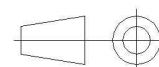
### PANEL CUT OUT



	mm	
	Maxi	mini
A	8	7.9
B	7.6	7.5



All dimensions are in mm. Tolerances according ISO 2768 m-H



COMPONENTS	MATERIALS	PLATING (μm)
Body	<b>STAINLESS STEEL</b>	<b>GOLD OVER NICKEL</b>
Center contact	<b>BERYLLIUM COPPER</b>	<b>GOLD OVER NICKEL</b>
Outer contact	<b>BRASS</b>	<b>GOLD OVER NICKEL</b>
Insulator	<b>KAPTON + GLASS</b>	
Gasket	<b>NITRILE RUBBER BS2751BA70</b>	
Others parts	<b>BRASS</b>	<b>GOLD OVER NICKEL</b>
-	-	-
-	-	-

PAGE 2/2

ISSUE  
**10-02-25A**

SERIES **SMA2.9**

PART NUMBER **R127753130**

## PACKAGING

Standard	Unit	Other
<b>1</b>	<b>Contact us</b>	<b>Contact us</b>

## ELECTRICAL CHARACTERISTICS

Impedance		<b>50</b>	Ω
Frequency		<b>0-46</b>	GHz
VSWR	<b>1.1</b>	<b>+</b>	<b>0,010</b> x F(GHz) Maxi
Insertion loss		<b>0.1</b>	√F(GHz) dB Maxi
RF leakage	- (	<b>90</b>	- F(GHz) dB Maxi
Voltage rating		<b>350</b>	Veff Maxi
Dielectric withstanding voltage		<b>750</b>	Veff mini
Insulation resistance		<b>5000</b>	MΩ mini

## ENVIRONMENTAL

Operating temperature	<b>-65/+165</b>	°C
Hermetic seal	<b>10-8</b>	Atm.cm3/s
Panel leakage	<b>NA</b>	

## MECHANICAL CHARACTERISTICS

Center contact retention		
Axial force – Mating End	<b>27</b>	N mini
Axial force – Opposite end	<b>27</b>	N mini
Torque	<b>NA</b>	N.cm mini

## SPECIFICATION

Recommended torque		
Mating	<b>NA</b>	N.cm
Panel nut	<b>170</b>	N.cm

## OTHER CHARACTERISTICS

Mating life	<b>500</b>	Cycles mini
Nominal Weight	<b>7,800</b>	g
(Add +15% for max weight)		

Assembly instruction:

Others: