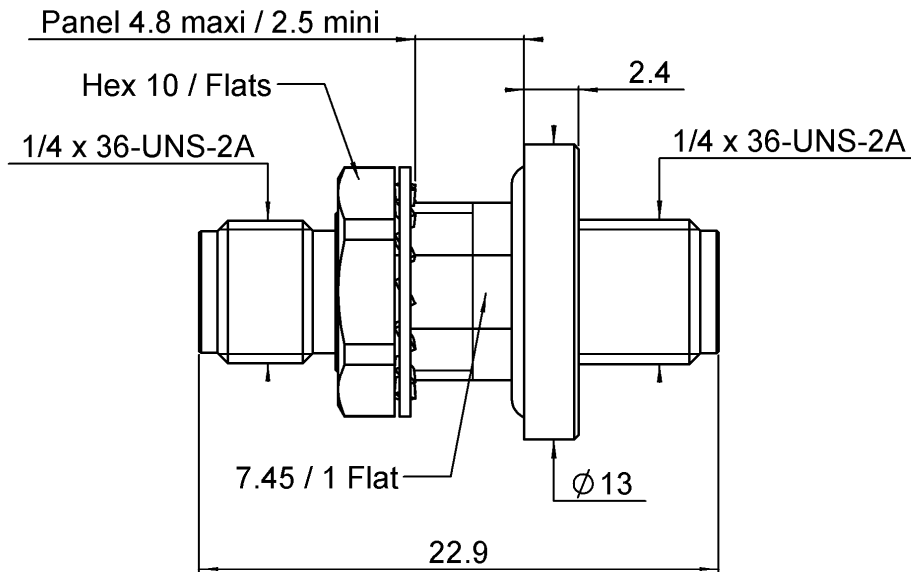


FEMALE FEMALE HERMETIC ADAPTOR

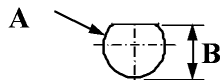
BULKHEAD PANEL SEAL

R127.753.130

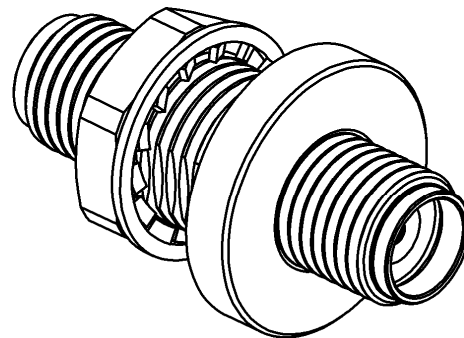
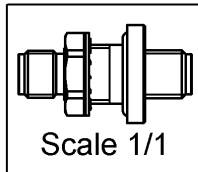
Series : SMA2.9



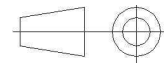
PANEL CUT OUT



	mm	
	Maxi	mini
A	8	7.9
B	7.6	7.5



All dimensions are in mm.



COMPONENTS	MATERIALS	PLATING (µm)
BODY	STAINLESS STEEL	GOLD 0.5 OVER NICKEL 2
CENTER CONTACT	BERYLLIUM COPPER	GOLD 1.3 OVER NICKEL 2
OUTER CONTACT	BRASS	GOLD 0.2 OVER NICKEL 2
INSULATOR	KAPTON + GLASS	
GASKET	NITRILE RUBBER BS2751BA70	
OTHERS PARTS	BRASS	GOLD 0.2 OVER NICKEL 2
-	-	-
-	-	-

Issue : 1014 A

In the effort to improve our products, we reserve the right to make changes judged to be necessary.

RADIAL 

FEMALE FEMALE HERMETIC ADAPTOR**BULKHEAD PANEL SEAL****R127.753.130**

Series : SMA2.9

PACKAGING

Standard	Unit	Other
1		Contact us

SPECIFICATION**ELECTRICAL CHARACTERISTICS**

Impedance	50	Ω
Frequency	0-46	GHz
VSWR	1.1 + 0,0100	x F(GHz) Maxi
Insertion loss	0.1	$\sqrt{F}(\text{GHz})$ dB Maxi
RF leakage	- (90	- F(GHz)) dB Maxi
Voltage rating	350	Veff Maxi
Dielectric withstanding voltage	750	Veff mini
Insulation resistance	5000	M Ω mini

ENVIRONMENTAL

Operating temperature	-40/+100	$^{\circ}\text{C}$
Hermetic seal	10-8	Atm.cm ³ /s
Panel leakage	NA	

OTHER CHARACTERISTICS

Assembly instruction

Others :

MECHANICAL CHARACTERISTICS

Center contact retention	
Axial force – Mating end	27 N mini
Axial force – Opposite end	27 N mini
Torque	NA N.cm mini
Recommended torque	
Mating	NA N.cm
Panel nut	170 N.cm
Mating life	500 Cycles mini
Weight	7.8 g

Issue : 1014 A

In the effort to improve our products, we reserve the right to make changes judged to be necessary.

